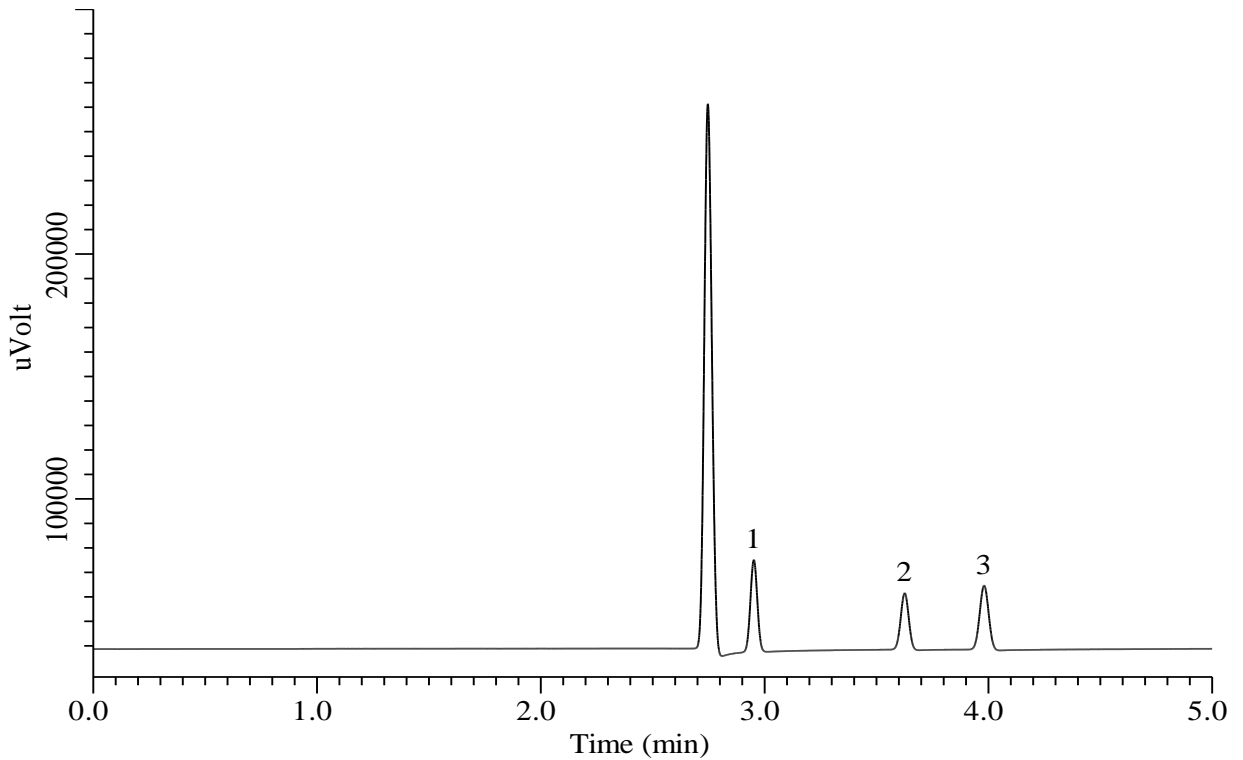


Inorganic gases



Conditions

System : GC/PDD
Column : TC-BOND Q
 0.53 mm I.D. x 30 m df = 20 µm
Col. Cat. No. : 1010-40243
Col. Temp. : 40 °C
Carrier Gas : He 20 kPa
Injection : Split flow 50 mL/min
 120 °C
Detection : PDD(HID) Range x1
 250 °C
Sample Size : 1000 ppm Vol/Vol in He
 400 µL

Analyte

1. Methane
 2. Carbon dioxide
 3. Nitrous oxide