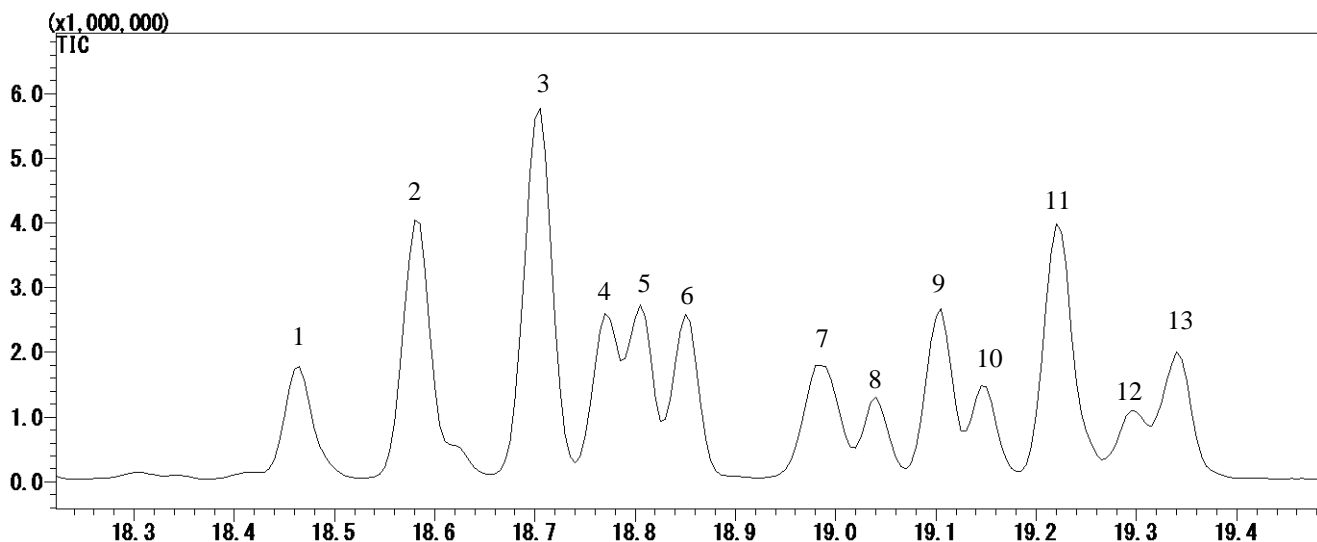


4-Nonylphenol



Conditions

- System** : GC-MS
- Column** : InertCap 5MS
0.25 mm I.D. x 30 m df = 0.25 µm
- Col. Cat. No.** : 1010-18642
- Col. Temp.** : 50 °C(1 min hold) - 8 °C/min - 280 °C
- Carrier Gas** : He 36.3 cm/sec
- Injection** : Splitless 1min
250 °C
- Detection** : MS Scan ($m/z = 35 - 500$)
Interface Temp. 280 °C
- Sample Size** : 100 µg/mL (Isomer Mixture) in Dichloromethane
1 µL
- Analyte** :
- 1. 4-(2,4-dimethylheptan-4-yl)phenol
 - 2. 4-(2,4-dimethylheptan-2-yl)phenol
 - 3. 4-(3,6-dimethylheptan-3-yl)phenol
 - 4. 4-(3,5-dimethylheptan-3-yl)phenol
 - 5. 4-(2,5-dimethylheptan-2-yl)phenol
 - 6. 4-(3,5-dimethylheptan-3-yl)phenol
 - 7. 4-(3-ethyl-2-methylhexane-2-yl)phenol
 - 8. 4-(3,4-dimethylheptan-4-yl)phenol
 - 9. 4-(3,4-dimethylheptan-3-yl)phenol
 - 10. 4-(3,4-dimethylheptan-4-yl)phenol
 - 11. 4-(2,3-dimethylheptan-2-yl)phenol
 - 12. 4-(3-methyloctan-3-yl)phenol
 - 13. 4-(3,4-dimethylheptan-3-yl)phenol