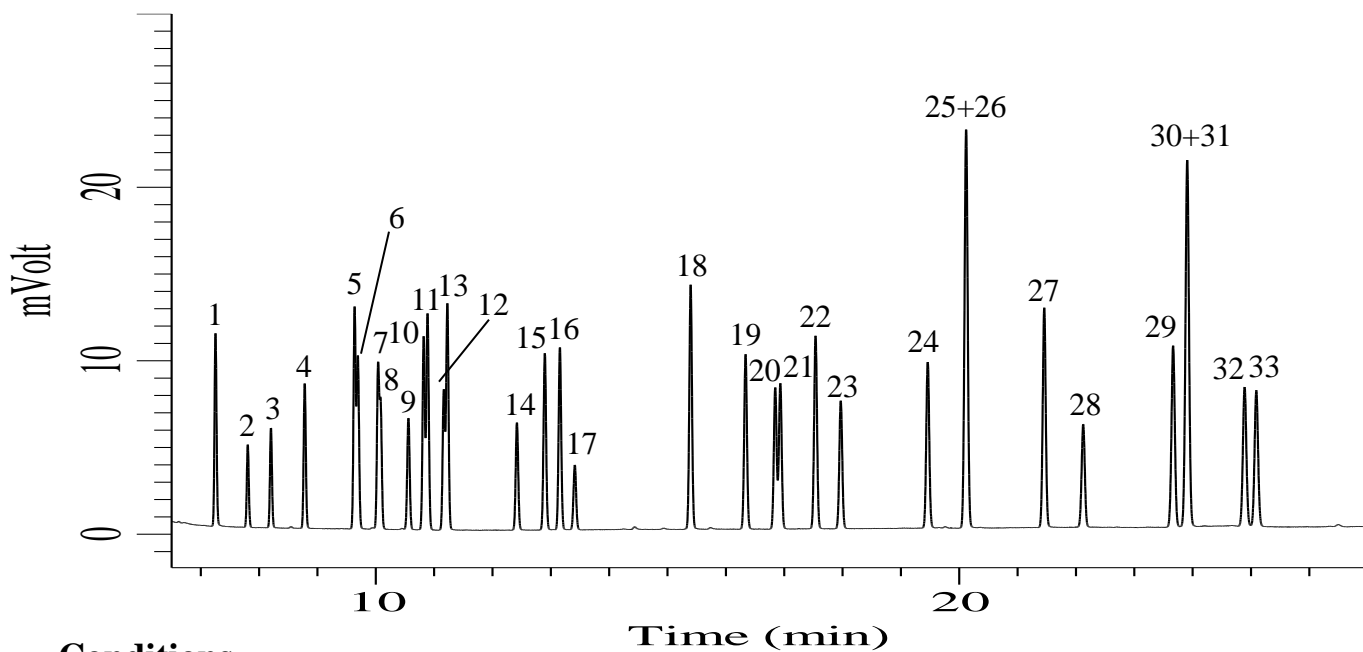


## Organic Solvents



### Conditions

**System** : GC-FID  
**Column** : InertCap 624  
 0.25 mm I.D. x 60 m df = 1.4 μm  
**Col. Cat. No.** : 1010-14666  
**Col. Temp.** : 60 °C - 4 °C/min - 150 °C (7 min hold)  
**Carrier Gas** : He 200 kPa  
**Injection** : Split flow 80 mL/min  
 250 °C  
**Detection** : FID Range 10<sup>0</sup>  
 250 °C  
**Sample Size** : Analyte in Methanol  
 0.2 μL

**Analyte** :

1. 1,1-Dichloroethene
2. Dichloromethane
3. *trans*-1,2-Dichloroethene
4. 1,1-Dichloroethane
5. 2,2-Dichloropropane
6. *cis*-1,2-Dichloroethene
7. Bromochloromethane
8. Chloroform
9. 1,1,1-Trichloroethane
10. 1,1-Dichloropropene

11. Carbontetrachloride
12. Benzene
13. 1,2-Dichloroethane
14. Trichloroethene
15. 1,2-Dichloropropane
16. Dibromomethane
17. Bromodichloromethane
18. Toluene
19. 1,1,2-Trichloroethane
20. Tetrachloroethene
21. 1,3-Dichloropropane
22. Dibromochloromethane
23. 1,2-Dibromoethane
24. Chlorobenzene
25. *m*-Xylene
26. *p*-Xylene
27. *o*-Xylene
28. Bromoform
29. 1,1,2,2-Tetrachloropropane
30. 1,2,3-Trichloropropane
31. Bromobenzene
32. *m*-Chlorotoluene
33. *p*-Chlorotoluene