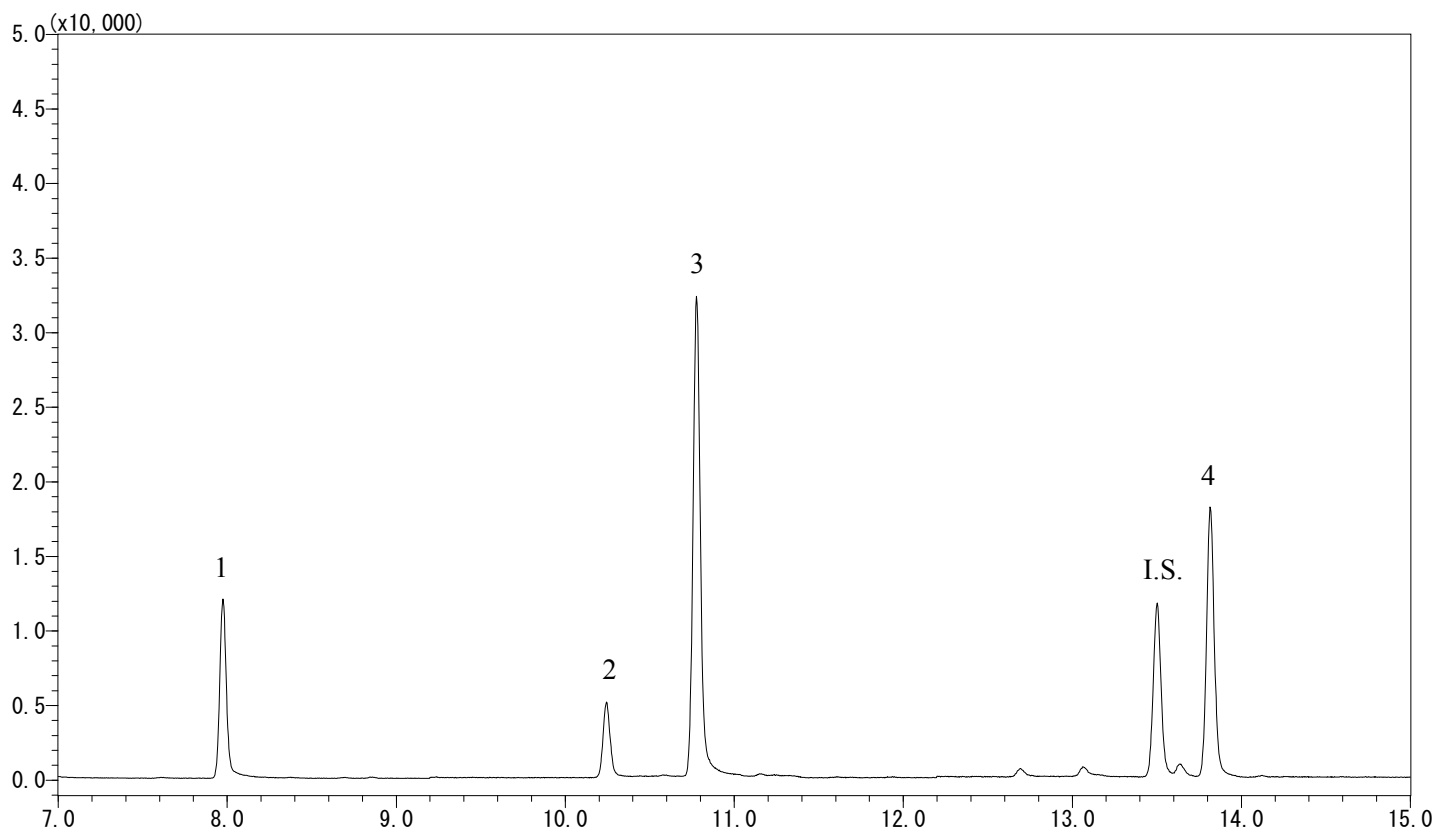


InertSearch™ for GC

InertCap® Applications

Haloacetic acids

Data No. GA 233-0644



Conditions

System : GC-MS
Column : InertCap 1MS
0.25 mm I.D. x 30 m df = 1.0 µm
Col. Cat. No. : 1010-12145
Col. Temp. : 40 °C (1 min hold) - 5 °C/min - 120 °C - 20 °C/min - 240 °C (2 min hold)
Carrier Gas : He 36.0 cm/sec
Injection : Pulsed Splitless (150kPa until 1.5 min) 1min
250 °C
Detection : MS SIM
Interface Temp. 280 °C
Sample Size : Analyte in MTBE
1 µL

Analyte : 1. Chloroacetic acid (0.25 µg/mL)
2. Bromoacetic acid (0.25 µg/mL)
3. Dichloroacetic acid (0.25 µg/mL)
4. Trichloroacetic acid (0.25 µg/mL)
I.S. 1,2,3-Trichloropropane (0.5 µg/mL)
(Methylester Deriv. by Diazomethane)