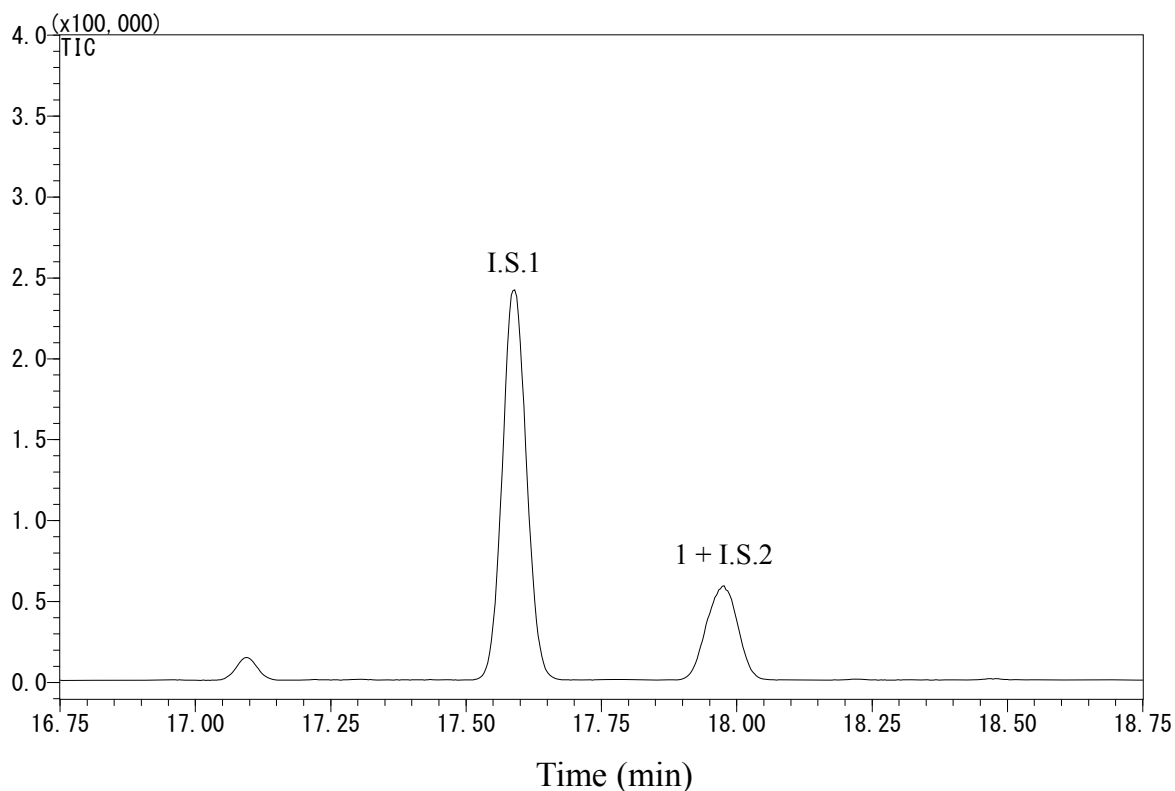


InertSearch™ for GC

InertCap® Applications

Aniline

Data No. GA 252-0644



Conditions

System : GC-MS
Column : InertCap Pure-WAX
0.25 mm I.D. x 30 m df = 0.25 µm
Col. Cat. No. : 1010-68142
Col. Temp. : 60 °C (5 min hold) - 10 °C/min - 200 °C (5 min hold)
Carrier Gas : He 36.5 cm/s
Injection : Splitless 1min
250 °C
Detection : MS SIM
Interface Temp. 250 °C
Sample Size : Analyte in Methylacetate
1 µL
Analyte : 1. Aniline (0.2 µg/mL)
I.S.1. Naphthalene-*d*8 (0.5 µg/mL)
I.S.2. Aniline-*d*5 (0.2 µg/mL)

InertSearch™ for GC

InertCap® Applications

Aniline

Data No. GA 252-0644

