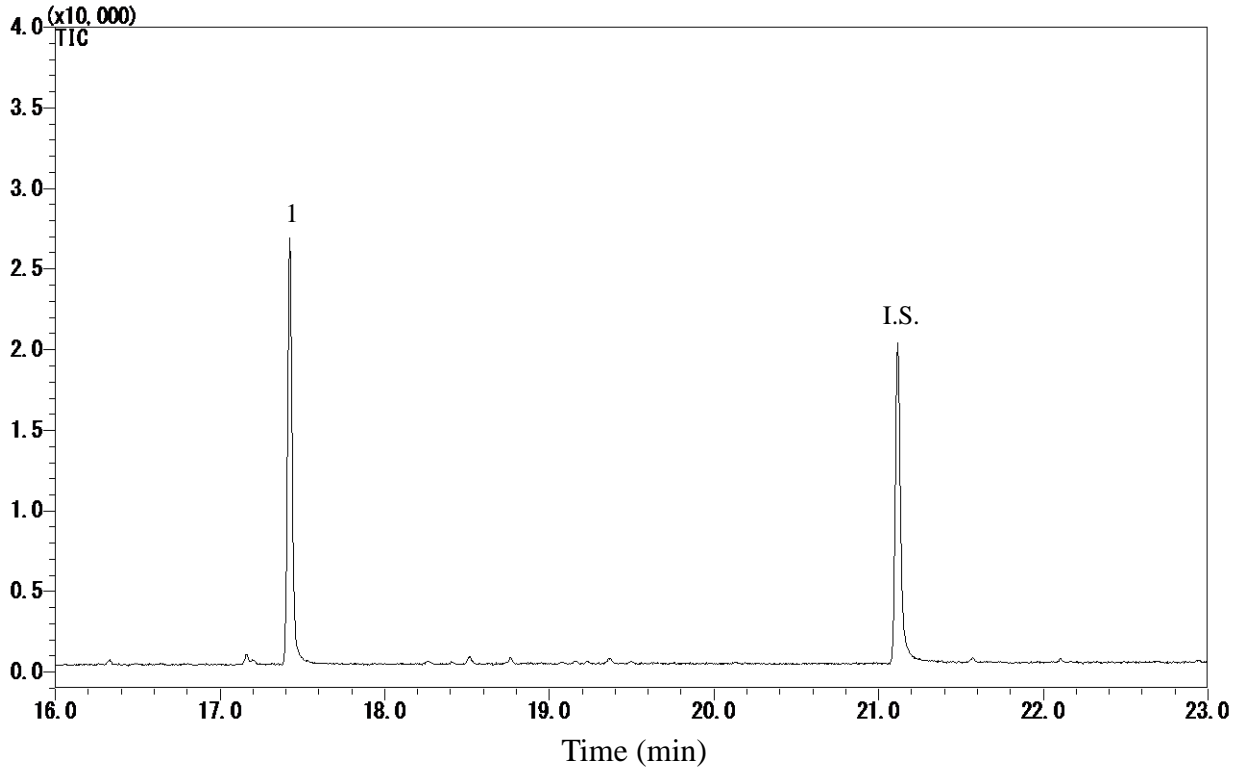


## 4-*t*-Octylphenol



### Conditions

**System** : GC-MS  
**Column** : InertCap 5MS/Sil  
 0.25 mm I.D. x 30 m df = 0.25 µm  
**Col. Cat. No.** : 1010-18642  
**Col. Temp.** : 50 °C (1 min hold) - 8 °C/min - 280 °C  
**Carrier Gas** : He 36.3 cm/s  
**Injection** : Splitless 1min  
 250 °C  
**Detection** : MS SIM  
 Interface Temp. 280 °C  
**Sample Size** : Analyte in Dichloromethane  
 1 µL

**Analyte** :  
 1. 4-*t*-Octylphenol (0.1 µg/mL)  
 I.S. 4-*n*-Nonylphenol-*d*4 (0.1 µg/mL)

# 4-t-Octylphenol

