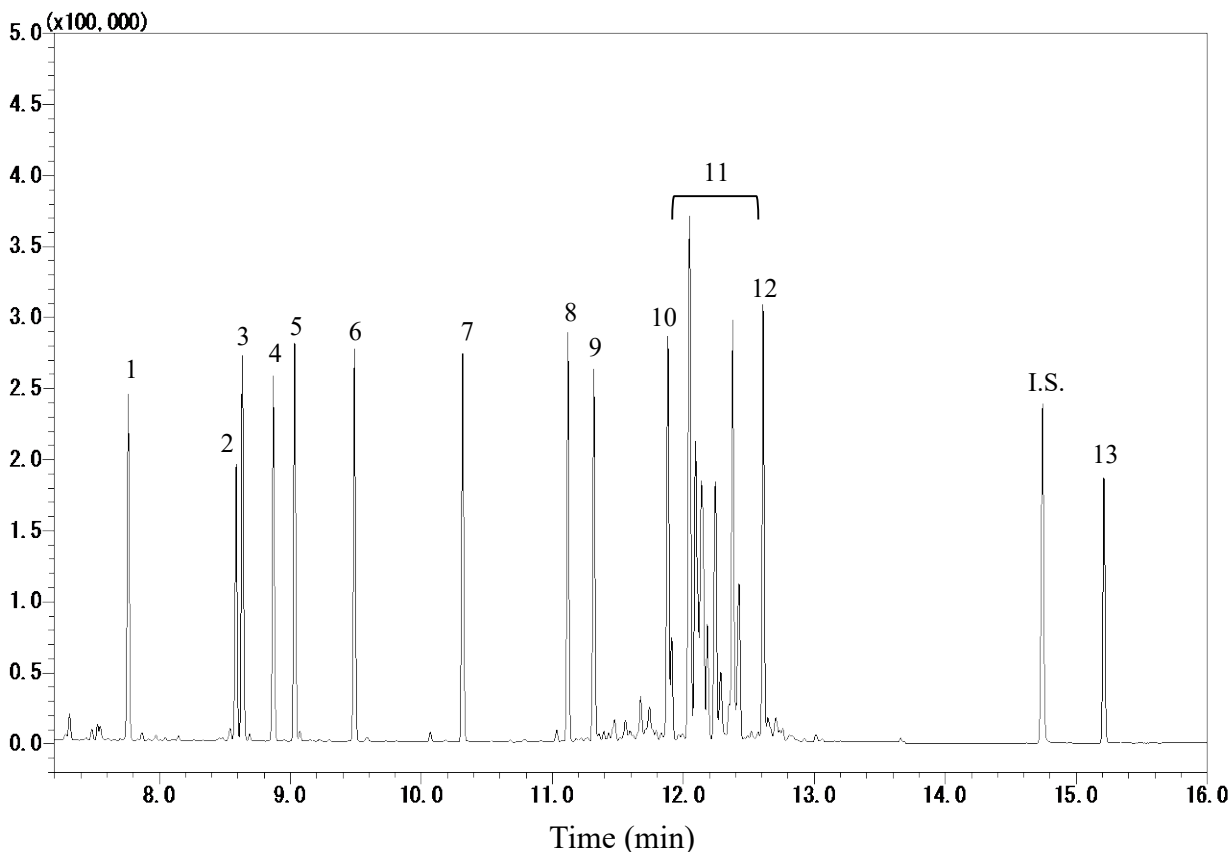


# InertSearch™ for GC

InertCap® Applications

## Alkylphenols

Data No. GA 259-0644



### Conditions

**System** : GC-MS  
**Column** : InertCap 5MS  
0.25 mm I.D. x 30 m df = 0.25 µm  
**Col. Cat. No.** : 1010-18642  
**Col. Temp.** : 50 °C (1 min hold) - 15 °C/min  
- 280 °C (15 min hold)  
**Carrier Gas** : He 36.3 cm/s  
**Injection** : Splitless 1min  
250 °C  
**Detection** : MS SIM  
Interface Temp. 280 °C  
**Sample Size** : 1 µg/mL in Dichloromethane  
1 µL

**Analyte** :

1. 4-Ethylphenol
2. 2-*t*-Butylphenol
3. 3-*t*-Butylphenol
4. 4-*t*-Butylphenol
5. 4-*sec*-Butylphenol
6. 4-*n*-Butylphenol
7. 4-*n*-Pentylphenol
8. 4-*n*-Hexylphenol
9. 4-*t*-Octylphenol
10. 4-*n*-Heptylphenol
11. Nonylphenol (10 µg/mL)
12. 4-*n*-Octylphenol
13. Bisphenol A

I.S. Pyrene-*d*10 (2 µg/mL)  
(TMS Deriv. by BSTFA)