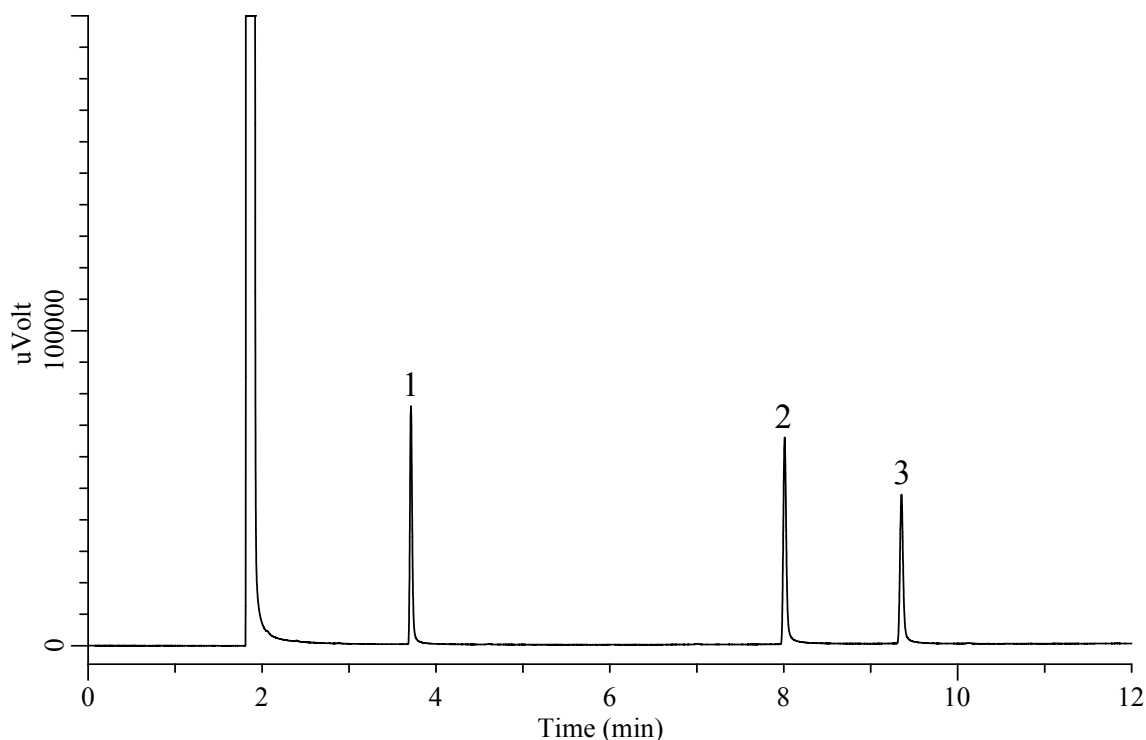


# InertSearch™ for GC

InertCap® Applications

## Glycerin, Concentrated glycerin (Under the Condition of Japanese Pharmacopoeia 16)

Data No. GA 263-0904



### Conditions

**System** : GC-FID  
**Column** : InertCap 1701  
0.32 mm I.D. x 30 m df = 1.0 μm  
**Col. Cat. No.** : 1010-61245  
**Col. Temp.** : 100 °C — 7.5 °C/min — 220 °C  
**Carrier Gas** : He 80 kPa  
**Injection** : Split 1:20  
220 °C  
**Detection** : FID Range 10<sup>0</sup>  
250 °C  
**Sample Size** : 1 μL  
**Sample** : Standard  
500 mg/L in Methanol

### Analyte

1. Ethylene glycol  
2. Diethylene glycol  
3. Glycerin

Resolution (1, 2) : 78.8 (≥ 40)  
Resolution (2, 3) : 21.1 (≥ 10)