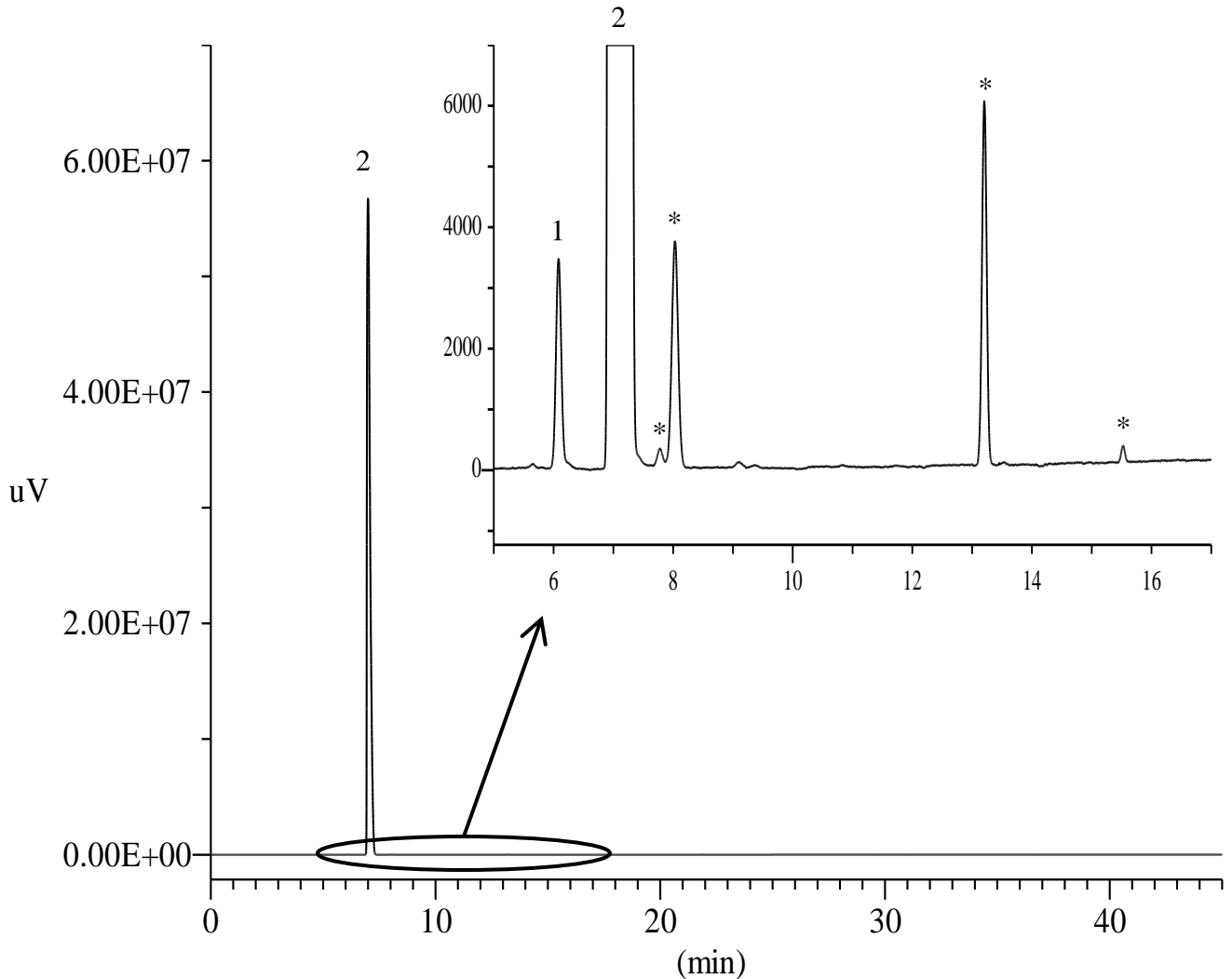


## Analysis of Sevoflurane

(Under the Condition of the Japanese Pharmacopoeia 16)



### Conditions

**System** : GC-FID  
**Column** : InertCap 624  
 0.32 mm I.D. x 30 m df = 1.8  $\mu$ m  
**Col. Cat. No.** : 1010-14747  
**Col. Temp.** : 40 °C (10 min hold) — 10 °C/min — 200 °C  
**Carrier Gas** : He 0.78 mL/min Constant Flow  
**Injection Vol.** : 2  $\mu$ L  
**Injection** : Split 1:20  
 200 °C  
**Detection** : FID Auto Range  
 225 °C  
**Sample** : Sevoflurane

### Analyte

1. Hexafluoro isopropyl methyl ether  
 2. Sevoflurane  
 \*. Impurities