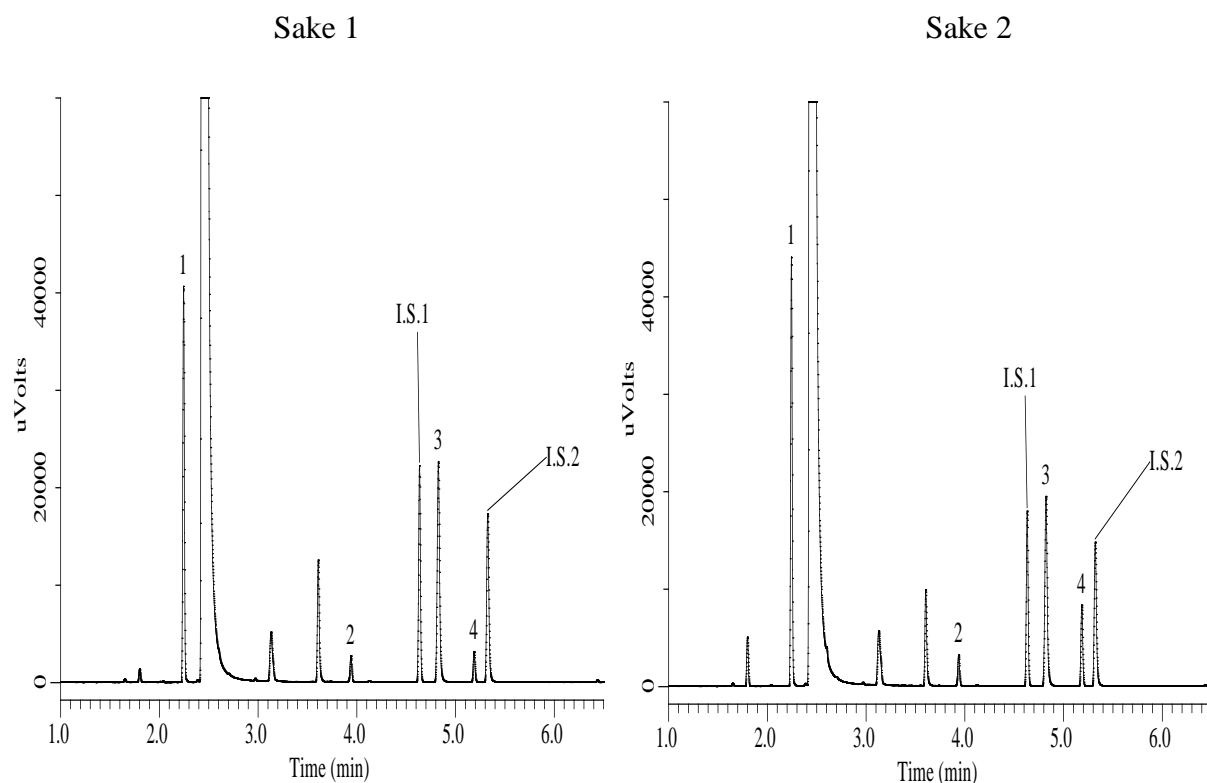


## Analysis of Aromatic Compounds in Sake by the Analysis Method of the National Tax Agency



### Conditions

**System** : GC4000Plus-FID  
 Headspace Gas(HT3)  
**Column** : InertCap Pure-WAX  
 0.32 mm I.D. x 30 m df = 0.25  $\mu$ m  
**Col. Cat. No.** : 1010-68242  
**Col. Temp.** : 40 °C - 10 °C/min - 240 °C  
**Carrier Gas** : He 2mL/min  
**Injection** : Split 1:50  
 250 °C  
**Injection Vol.** : Headspace Gas 1 mL  
**Detection** : FID Auto Range  
 250 °C  
**Sample** : Sake 0.9 mL + I.S. 0.1mL  
 Sample heating Temp. 50 °C  
 Sample heating time 30 min  
**Headspace Vial** : 22 mL

### Analyte

1. Ethyl acetate  
 2. Isopentyl acetate  
 (Isoamyl acetate)  
 I.S.1. Methyl hexanoate 10 ppm  
 (Methyl caproate)  
 3. 3-Methyl-1-butanol  
 (Isoamyl alcohol)  
 4. Ethyl hexanoate  
 (Ethyl caproate)  
 I.S.2. 1-Pentanol 100ppm  
 (*n*-Amyl alcohol)