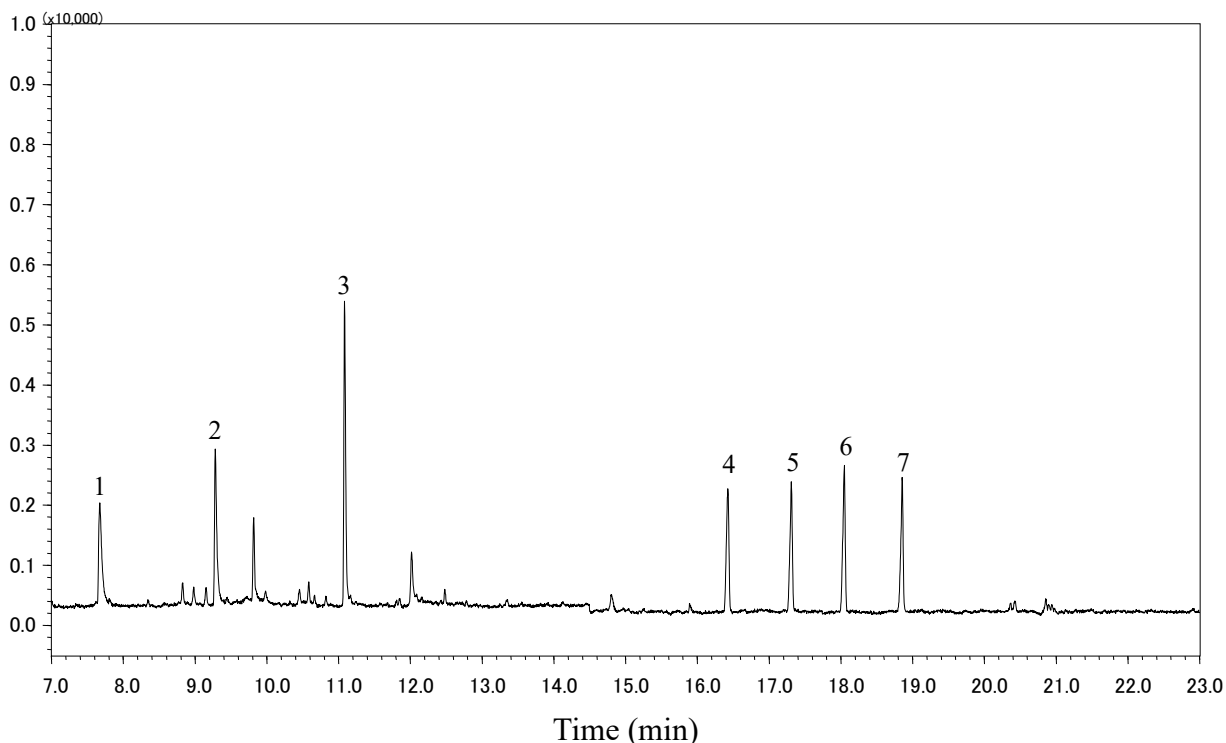


Analysis of Sulfonic acid ester

Data No. GA 278-0644



Conditions

System : GC-MS
Column : InertCap 5MS
0.25 mm I.D. x 30 m df = 0.25 µm
Col. Cat. No. : 1010-18642
Col. Temp. : 40 °C (5 min hold) - 10 °C/min - 280 °C
Carrier Gas : He 36.1 cm/s
Injection : Splitless 1 min
250 °C
Detection : MS SIM
Interface Temp. 280 °C
Sample Size : 10 ng/mL in Ethyl acetate
1 µL

Analyte :

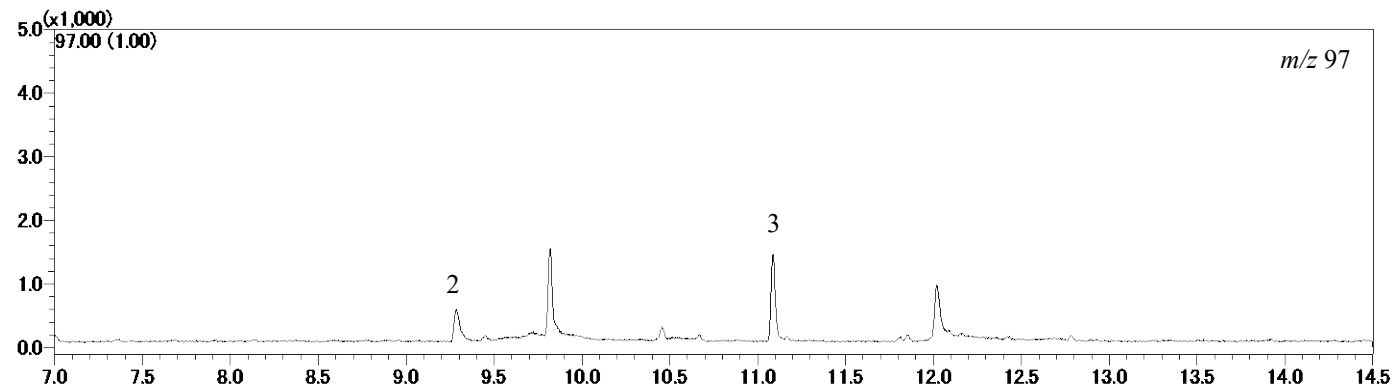
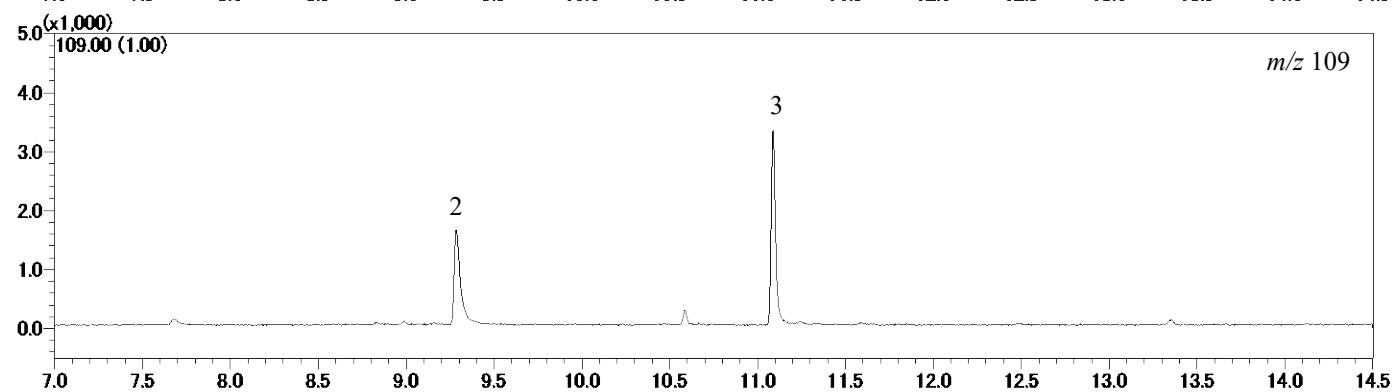
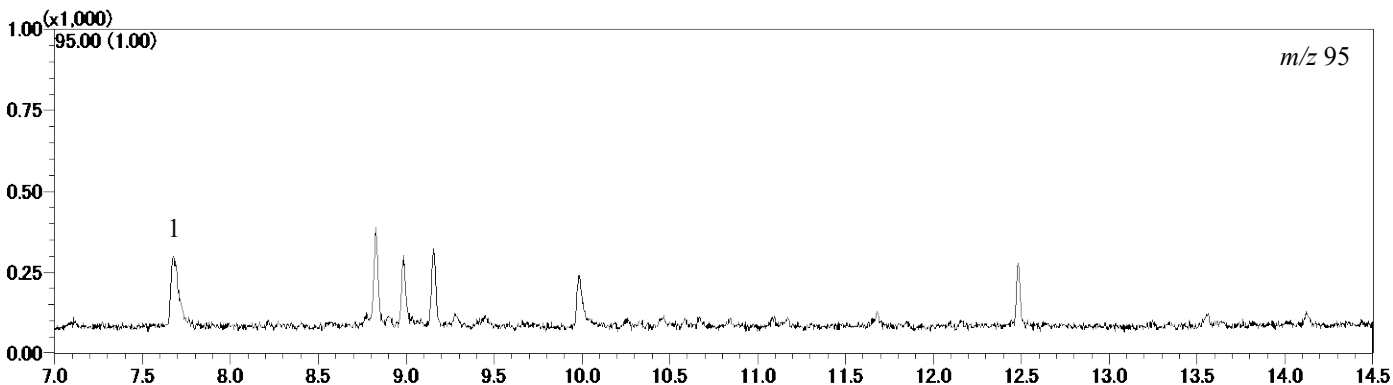
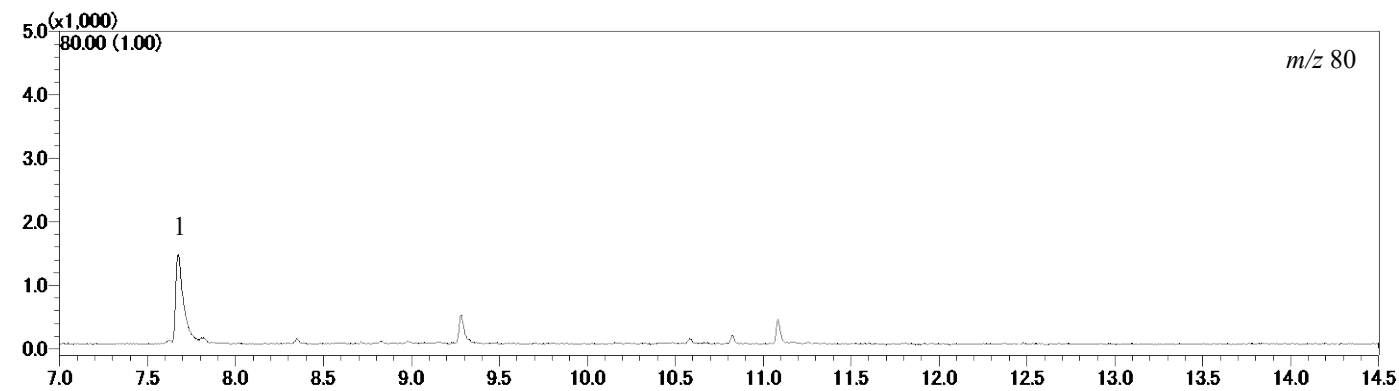
1. Methyl methanesulfonate
2. Ethyl methanesulfonate
3. Propyl methanesulfonate
4. Methyl benzenesulfonate
5. Ethyl benzenesulfonate
6. Methyl *p*-Toluenesulfonate
7. Ethyl *p*-Toluenesulfonate

InertSearch™ for GC

InertCap® Applications

Analysis of Sulfonic acid ester

Data No. GA 278-0644

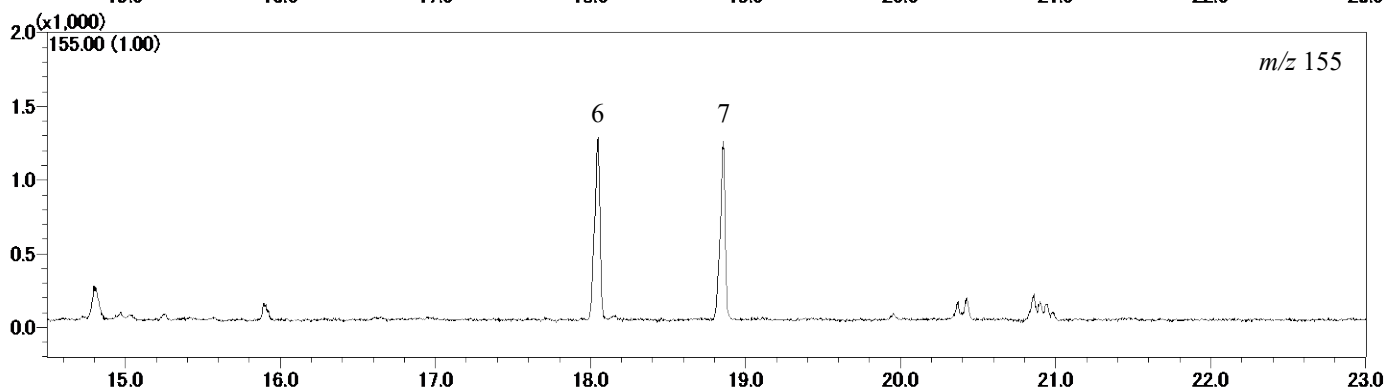
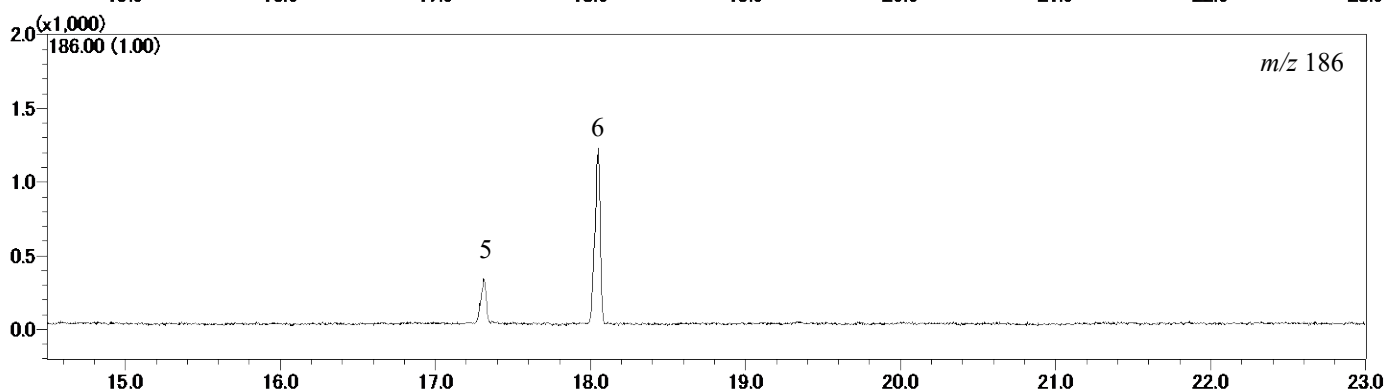
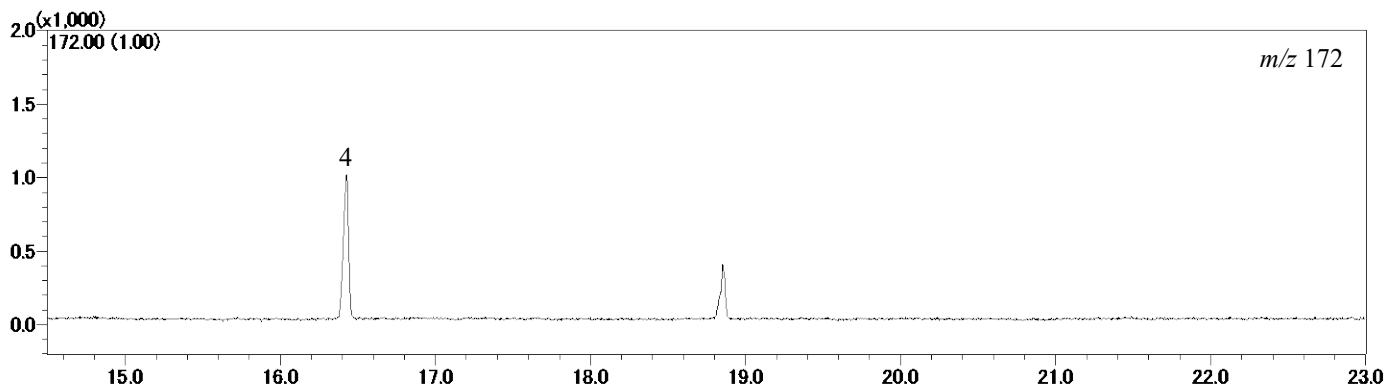
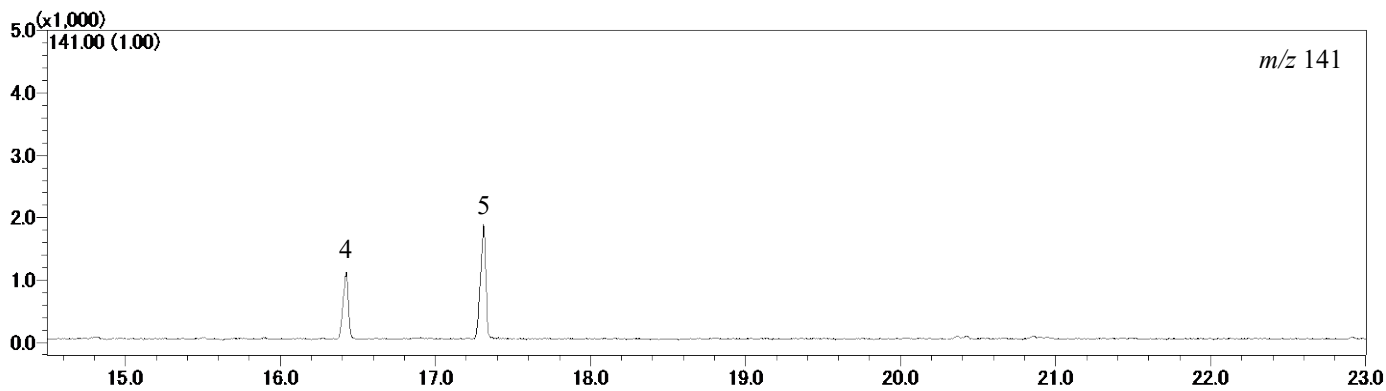


InertSearch™ for GC

InertCap® Applications

Analysis of Sulfonic acid ester

Data No. GA 278-0644



InertSearch™ for GC

InertCap® Applications

Analysis of Sulfonic acid ester

Data No. GA 278-0644

