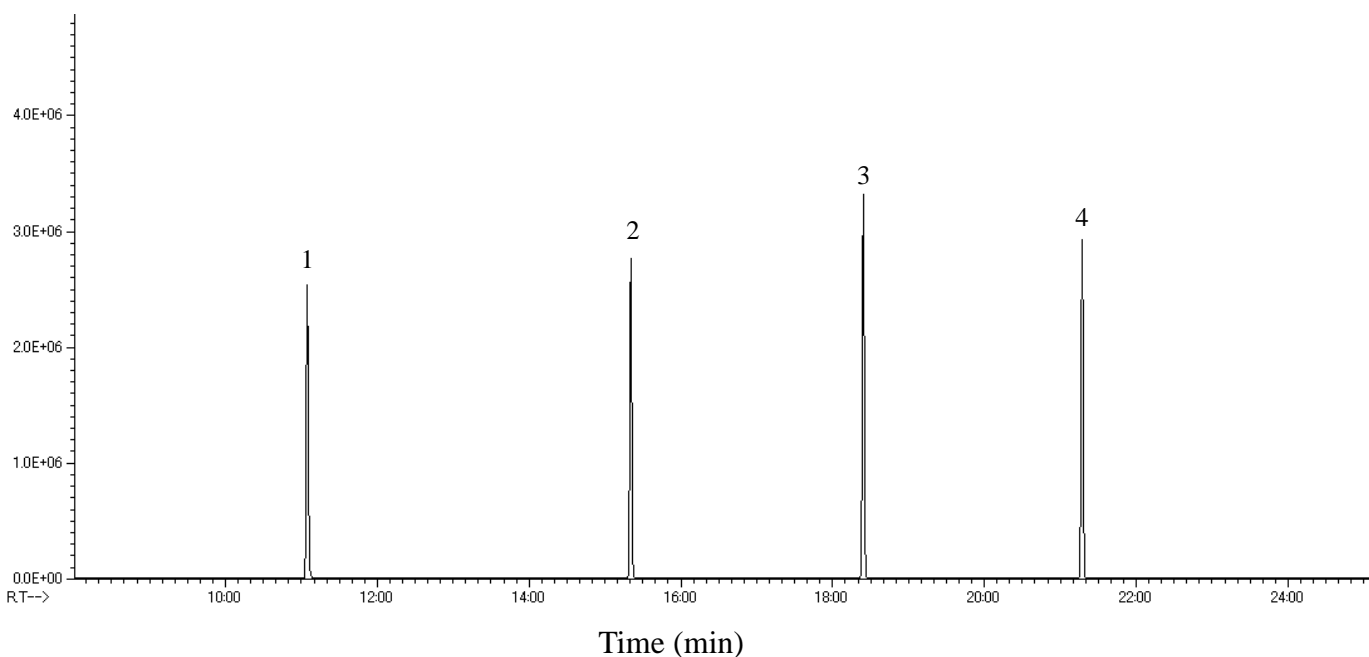


## Siloxane



### Conditions

**System** : GC-MS Thermal Desorption (TD 2530)

**Column** : InertCap 1MS  
0.25 mm I.D. x 60 m df = 0.25  $\mu$ m

**Col. Cat. No.** : 1010-12162

**Col. Temp.** : 40  $^{\circ}$ C (5 min hold) - 10  $^{\circ}$ C/min - 280  $^{\circ}$ C

**Carrier Gas** : He 150 kPa

**Injection** : Split 1:5  
270  $^{\circ}$ C

**Detection** : MS Scan ( $m/z$  35 - 500)  
Interface Temp. 280  $^{\circ}$ C

**Sample Size** : 100  $\mu$ g/mL in Dichloromethane  
1  $\mu$ L

**Analyte** : 1. Hexamethyl cyclotrisiloxane(D3)  
2. Octamethyl cyclotetrasiloxane(D4)  
3. Decamethyl cyclopentasiloxane(D5)  
4. Dodecamethyl cyclohexasiloxane(D6)