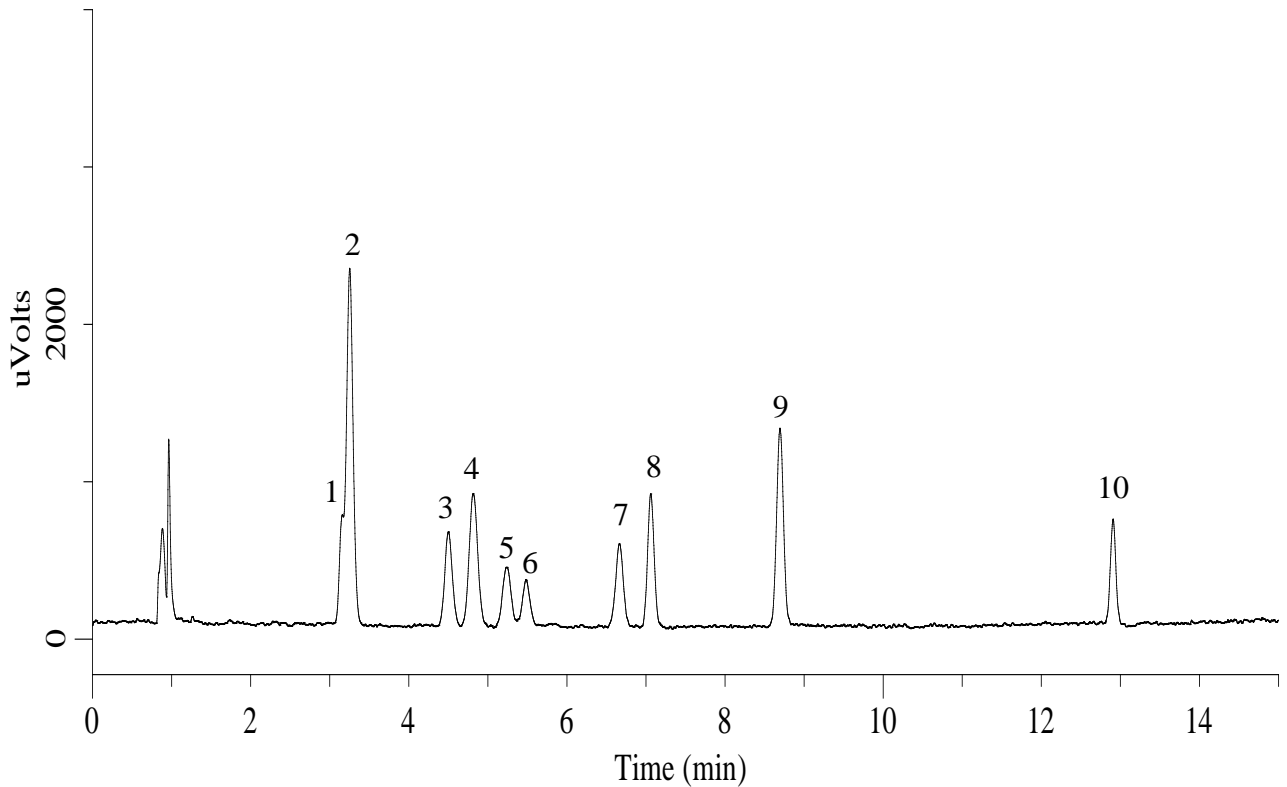


## Organic solvents



### Conditions

<b>System</b>	: GC-FID	<b>Analyte</b>	: 1. Dichloromethane
<b>Column</b>	: InertCap WAX 0.53 mm I.D. x 30 m df = 1.0 µm		2. Benzene
<b>Col. Cat. No.</b>	: 1010-67445		3. Trichloroethylene
<b>Col. Temp.</b>	: 40 °C (5 min hold) - 5 °C/min - 180 °C		4. 4-Methyl-2-pentanone(MIBK)
<b>Carrier Gas</b>	: He 10 mL/min		5. Tetrachloroethylene
<b>Injection</b>	: Split flow 10 mL/min 220 °C		6. Chloroform
<b>Detection</b>	: FID Auto Range 220 °C		7. 1,4-Dioxane
<b>Sample Size</b>	: 2-4 ppm(V/V) in N <sub>2</sub> 0.5 mL		8. 1,2-Dichloroethane
			9. Ethylbenzene
			10. Styrene