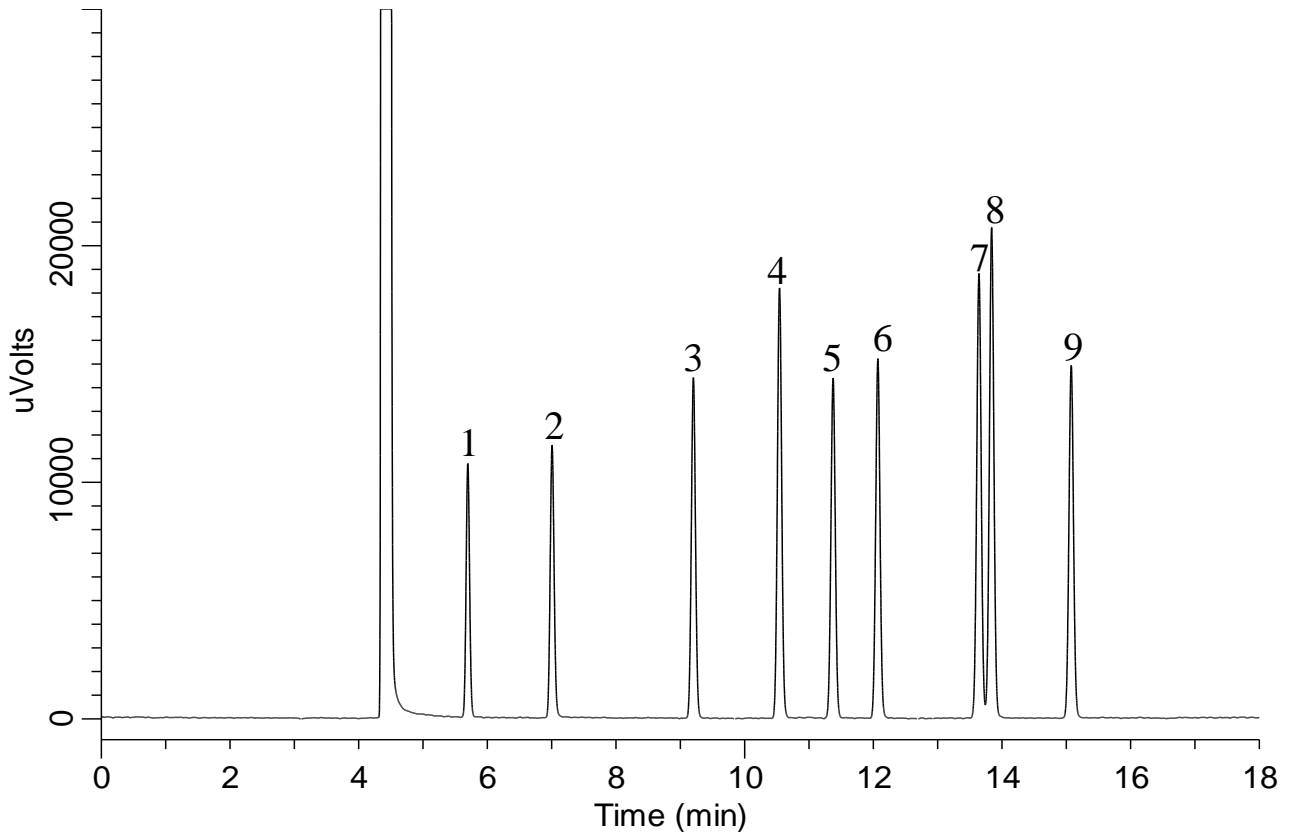


## Flavor by Japanese Standards of Food Additives



### Conditions

**System** : GC-FID  
**Column** : InertCap 1  
 0.25 mm I.D. × 30 m df = 1.00 μm  
**Col.Cat. No.** : 1010-11145  
**Col. Temp.** : 50 °C(5 min hold) - 5 °C/min - 230 °C  
**Carrier Gas** : He 50 kPa  
**Injection** : Split flow 65 mL/min  
 250 °C  
**Detection** : FID Auto Range  
 250 °C  
**Sample Size** : 1000 μg/mL in Methanol  
 1 μL

### Analyte

1. 2-Propanol  
 (Isopropanol)  
 2. 1-Propanol  
 3. 2-Methyl-1-propanol  
 (Isobutanol)  
 4. 1-Butanol  
 5. 3-Methyl-2-butanol  
 6. 2-Pentanol  
 7. 3-Methyl-1-butanol  
 (Isoamyl alcohol)  
 8. 2-Methyl-1-butanol  
 (2-Methylbutyl alcohol)  
 9. 1-Pentanol  
 (Amyl alcohol)