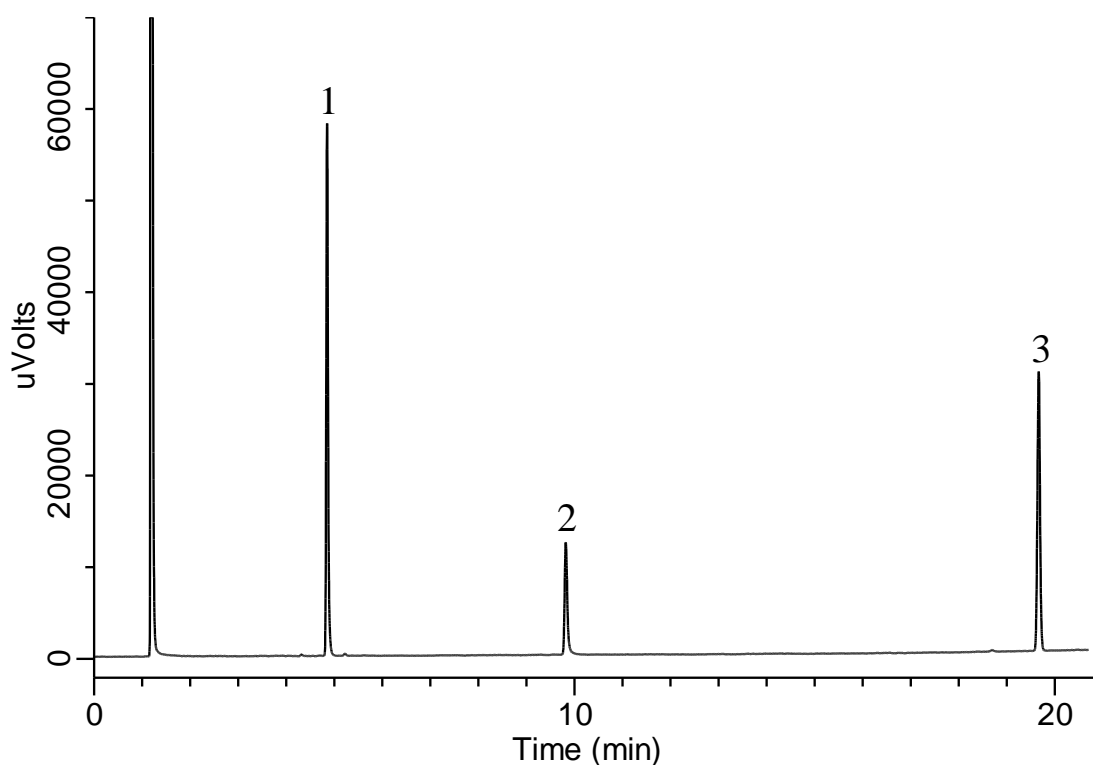


## Flavor by Japanese Standards of Food Additives



### Conditions

**System** : GC-FID  
**Column** : InertCap Pure-WAX  
           0.25 mm I.D. × 30 m df = 0.25 μm  
**Col. Cat. No.** : 1010-68142  
**Col. Temp.** : 105 °C - 5 °C/min - 230 °C (5 min hold)  
**Carrier Gas** : He 200 kPa  
**Injection** : Split flow 320 mL/min  
           275 °C  
**Detection** : FID Auto Range  
           300 °C  
**Sample Size** : 1000 μg/mL in Ethanol  
           1 μL

### Analyte

1. *dl*-Menthol  
 2. Maltol  
 3. Methyl β-naphthyl ketone