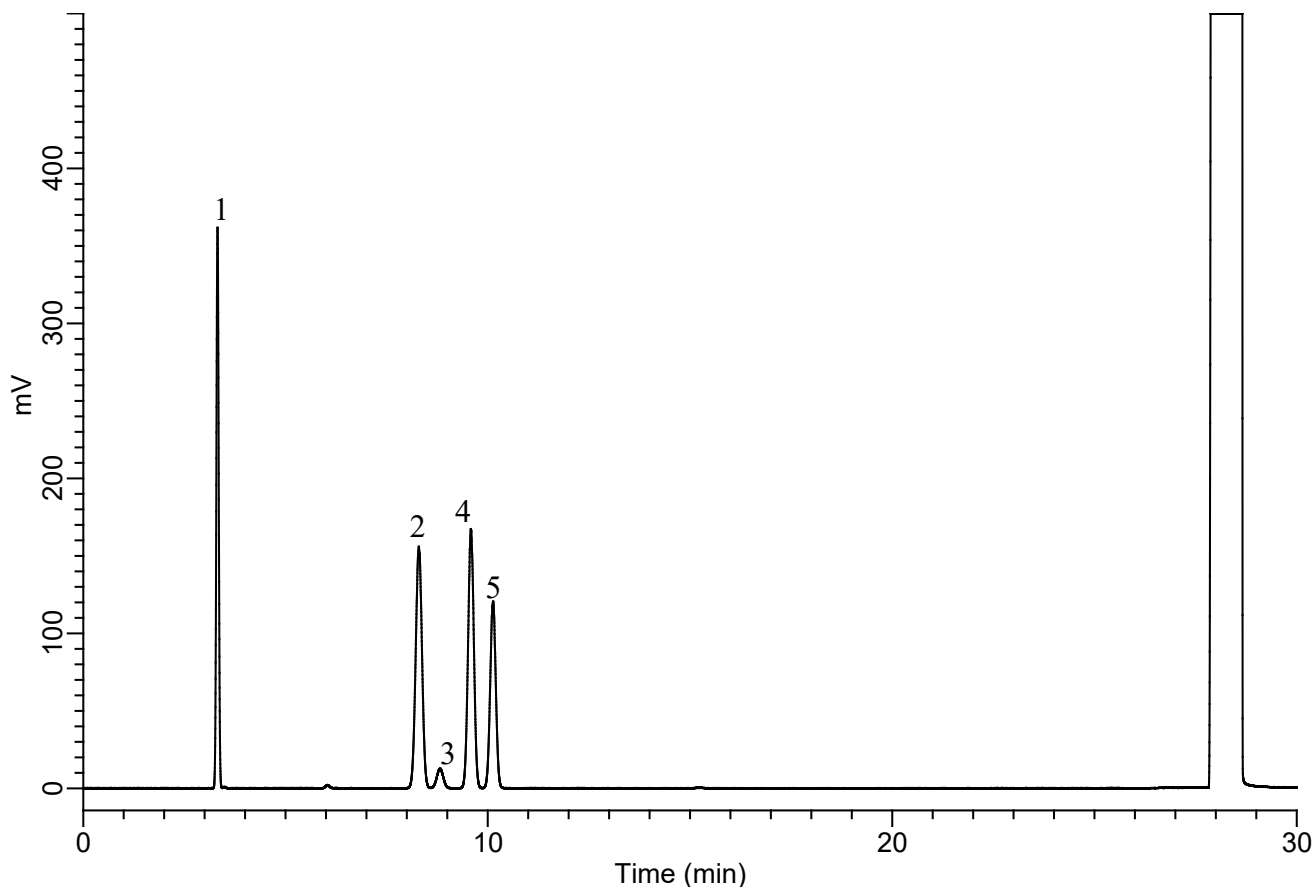


InertSearch for GC

InertCap Applications

Residual solvents in pharmaceuticals (JP18 Standard stock solution Class 1)

Data No. GA 323-0155



Conditions

System : GC4000 Plus-FID
Column : InertCap 624MS
0.53 mm I.D. × 30 m df = 3.00 μm
Col. Cat. No. : 1010-64948
Col. Temp. : 40 °C(20 min) - 10 °C/min
- 240 °C(20 min)

Carrier Gas : He 4.98 mL/min (35cm/sec)

Injection : Split 10:1
250 °C

Detection : FID Auto Range
250 °C

Sample Size : 1.0 μL
Analyte in Dimethyl sulfoxide

Analyte (R.T. min)

1. 1,1-Dichloroethene	(3.316)
2. 1,1,1-Trichloroethane	(8.294)
3. Carbon tetrachloride	(8.823)
4. Benzene	(9.580)
5. 1,2-Dichloroethane	(10.120)