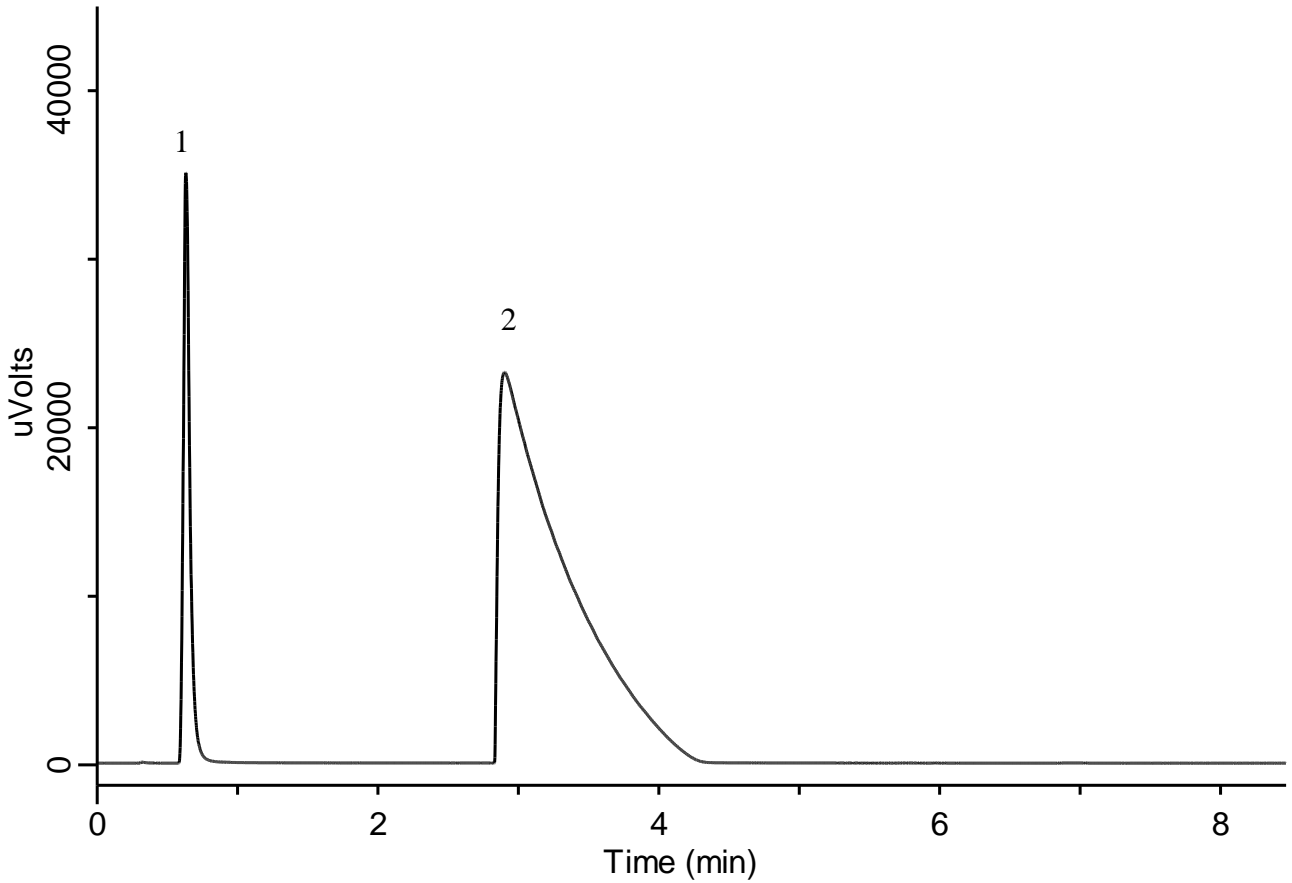


H₂O in Acetic acid



GC Conditions

System : GC/TCD
Column : InertCap Pure-WAX
 0.53 mm I.D. × 15 m, df = 1.00 μm
Col.Cat. No. : 1010-68425
Col.Temp. : 80 °C
Carrier Gas : He, 12.0 mL/min
GC Inlet : 150 °C, Split 5:1 Split flow 60 mL/min
Detection : TCD (120 mA Low, 130°C)

Analyte

1. Water approx. 10%
 2. Acetic acid approx. 90%