

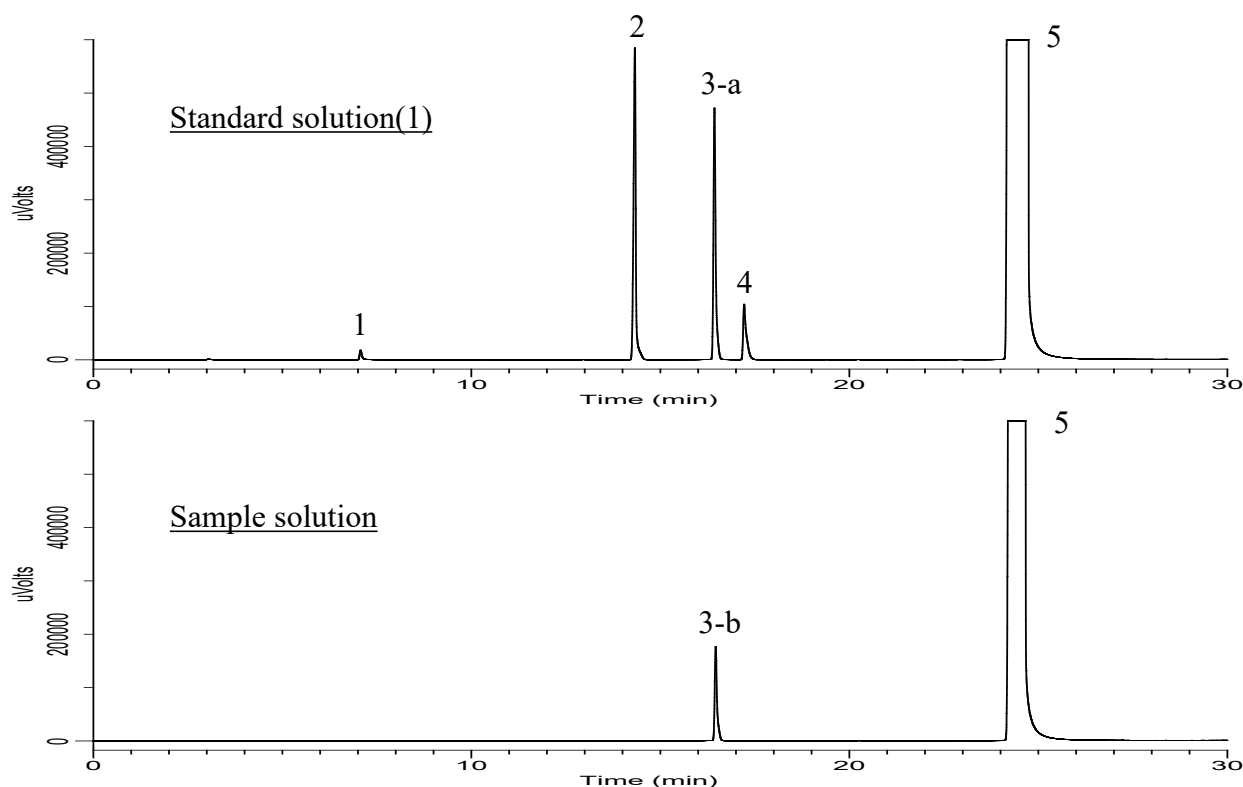
# InertSearch for GC

InertCap Applications

## Analysis of Benzyl Alcohol

(Under the condition of the Japanese Pharmacopoeia 18)

Data No. GA 335-1087



### Conditions

**System** : GC4000 Plus-FID  
**Column** : InertCap Pure-WAX  
0.32 mm I.D. × 30 m df= 0.5 μm  
**Col. Cat. No.** : 1010-68244  
**Col. Temp.** : 50 °C - 5 °C/min - 220 °C (35 min)  
**Carrier Gas** : He 1.21 mL/min (25 cm/sec)  
**Injection** : Splitless  
200 °C  
**Detection** : FID Auto Range  
310 °C  
**Sample Size** : 0.1 μL  
**Analyte** : 1. Ethylbenzene  
2. Dicyclohexyl  
3. Benzaldehyde  
4. Cyclohexanemethanol  
5. Benzyl Alcohol

### System suitability

Resolution (3-a, 4) : 6.79 (≥ 3.0)  
Relative retention time (1 to 5) : 0.29 (about 0.28)  
Relative retention time (2 to 5) : 0.58 (about 0.59)  
Relative retention time (3-a to 5) : 0.67 (about 0.68)  
Relative retention time (4 to 5) : 0.70 (about 0.71)