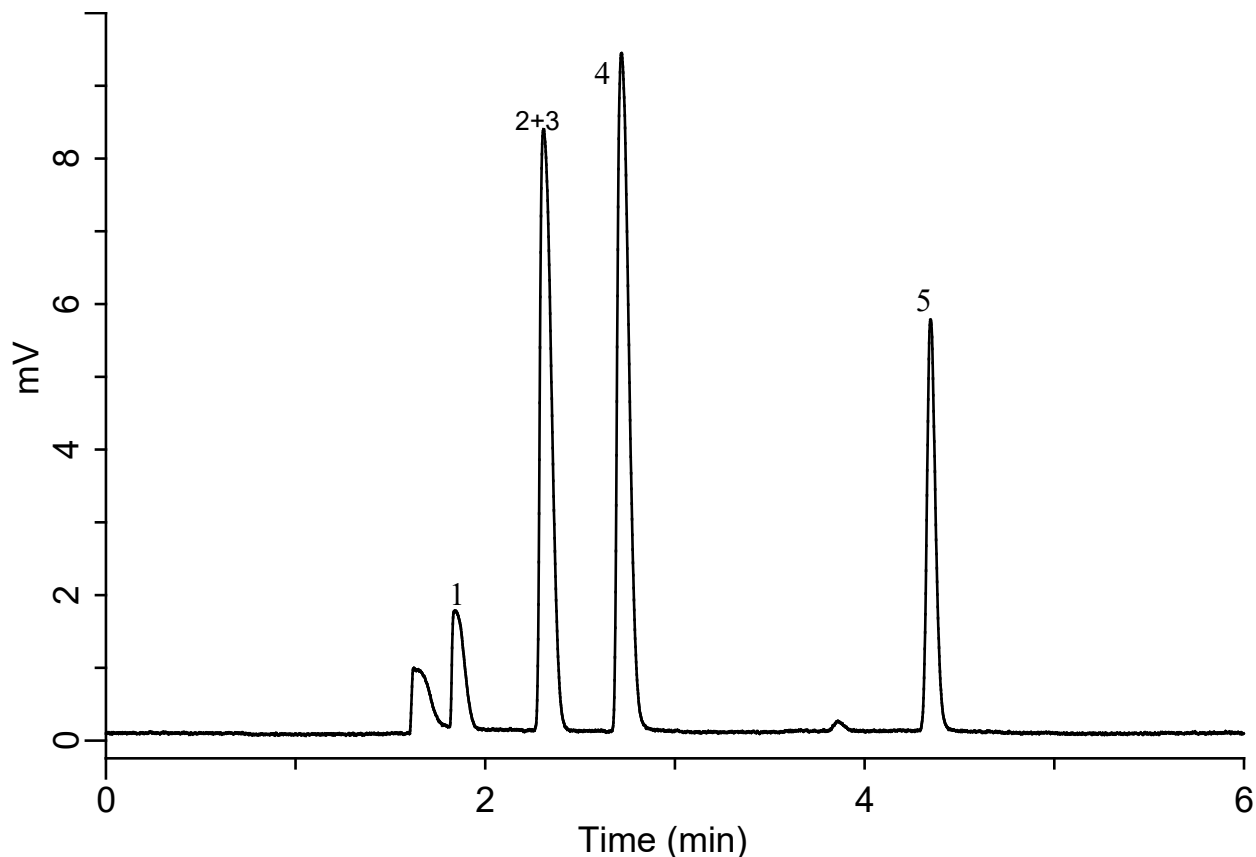


# InertSearch for GC

InertCap Applications

## Residual solvents in pharmaceuticals (JP18 Standard stock solution Class 1)

Data No. GA 340-0155



### Conditions

**System** : GC4000 Plus-FID  
**Column** : InertCap WAX (GL Sciences Inc.)  
0.32 mm I.D. × 30 m df = 0.25 μm  
**Col. Cat. No.** : 1010-67242  
**Col. Temp.** : 50 °C(20 min) – 6 °C/min  
- 165 °C(20 min)  
**Carrier Gas** : N<sub>2</sub> 2.20 mL/min (35 cm/sec)  
**Injection** : Split 4:1 Manual Injection  
140 °C  
**Detection** : FID Auto Range  
250 °C  
**Sample Size** : Head Space Gas 1mL

### Analyte

1. 1,1-Dichloroethene  
2. 1,1,1-Trichloroethane  
3. Carbon tetrachloride  
4. Benzene  
5. 1,2-Dichloroethane