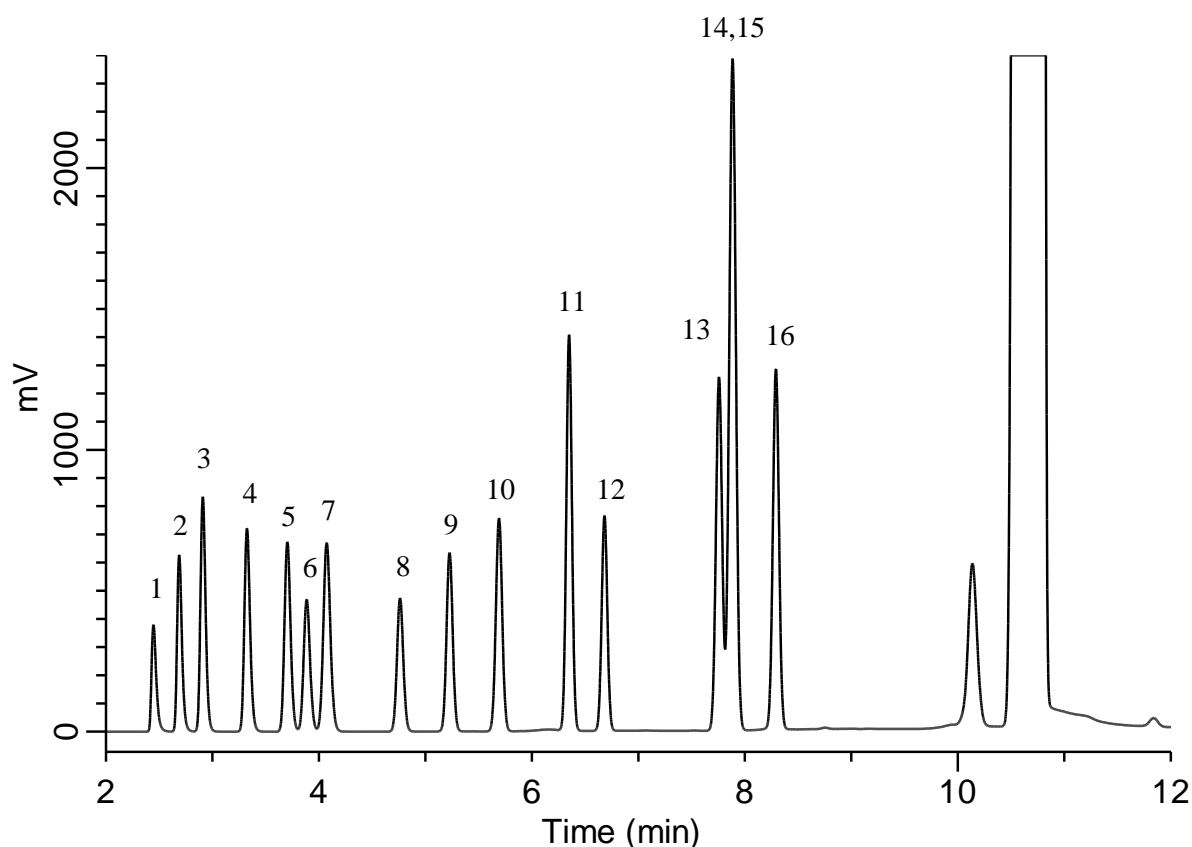


## Organic solvents in 1,2-Dichlorobenzene



### Conditions

**System** : GC-4000 Plus/FID  
**Column** : InertCap 1 (GL Sciences Inc.)  
 0.53 mm I.D. × 60 m df = 5.0 μm  
**Col. Cat. No.** : 1010-11469  
**Col. Temp.** : 100 °C(4 min) - 20 °C/min - 160 °C(1 min)  
 - 20 °C/min - 180°C(3 min)  
**Carrier Gas** : N<sub>2</sub> 8.0 mL/min  
**Injection** : Direct Injection  
 200 °C  
**Detection** : FID Auto Range  
 250 °C  
**Sample Size** : 0.2 μL  
 2000 ppm in 1,2-Dichlorobenzene

### Analyte

1. Methanol  
 2. Ethanol  
 3. 2-Propanol (Isopropyl alcohol)  
 4. 1-Propanol  
 5. 2-Butanone (MEK)  
 6. Ethyl acetate  
 7. 1-Butanol  
 8. 1-Methoxy-2-propanol  
 (Propylene glycol monomethyl ether)  
 9. n-Propyl acetate  
 10. Methyl isobutyl ketone (MIBK)  
 11. Toluene  
 12. n-Butyl acetate  
 13. Ethylbenzene  
 14. p-Xylene  
 15. m-Xylene  
 16. o-Xylene