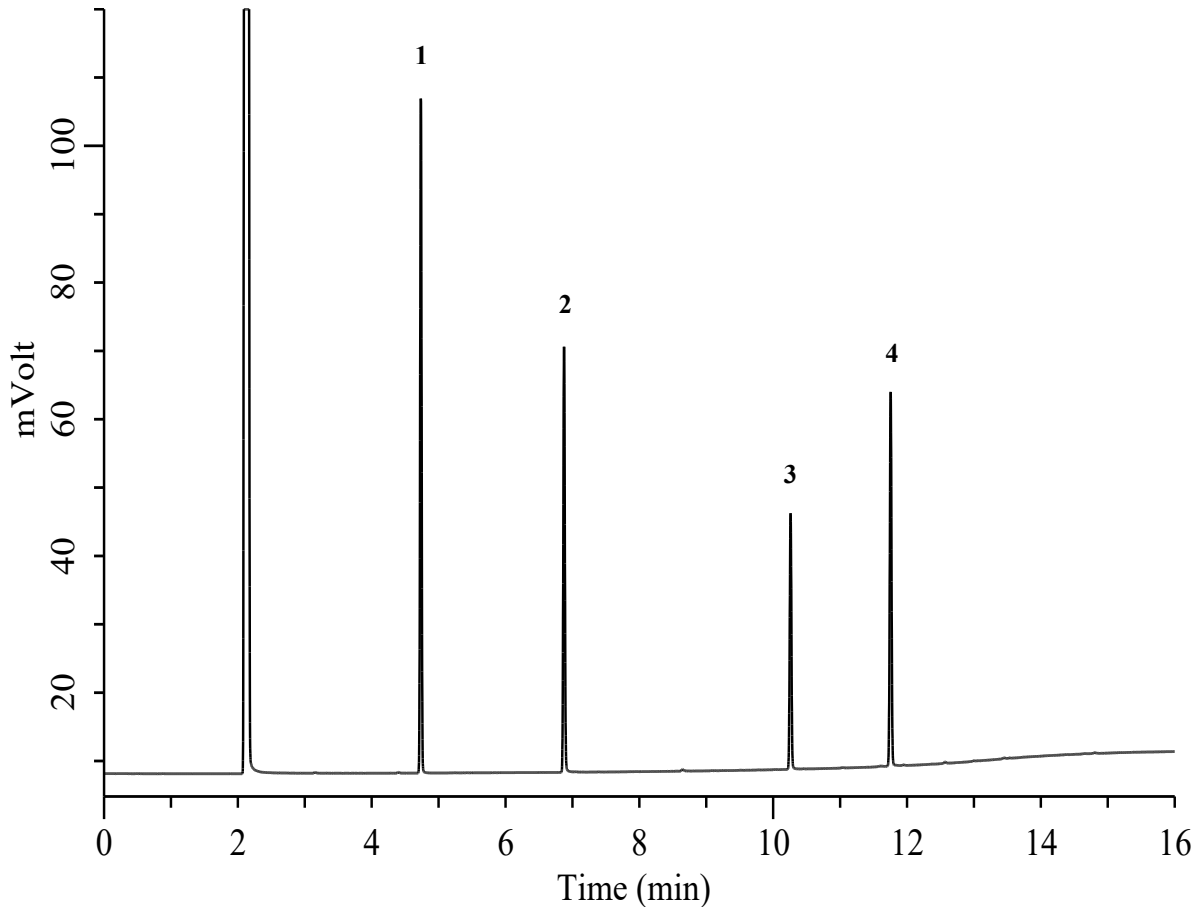


Analysis of Amines



Conditions

System	: GC-4000 Plus system (GL Sciences Inc.)	Analyte :	
Column	: InertCap 1 (GL Sciences Inc.) 0.25 mm I.D. x 30 m ϕ = 0.25 μ m	1. Tri- <i>n</i> -butylamine	0.1 mg/mL
Column Cat. No.	: 1010-11142	2. Dodecylamine	0.1 mg/mL
Column Temp.	: 100 °C - 15 °C/min - 300 °C(5 min)	3. Hexadecylamine	0.1 mg/mL
Carrier Gas	: He 100 kPa	4. Octadecylamine	
Injection	: Split 10 mL/min 300 °C	Sol. in Metanol	
Detection	: FID Auto Range 300 °C		
Injection Vol.	: 1 μ L		
Sample	: Standard		