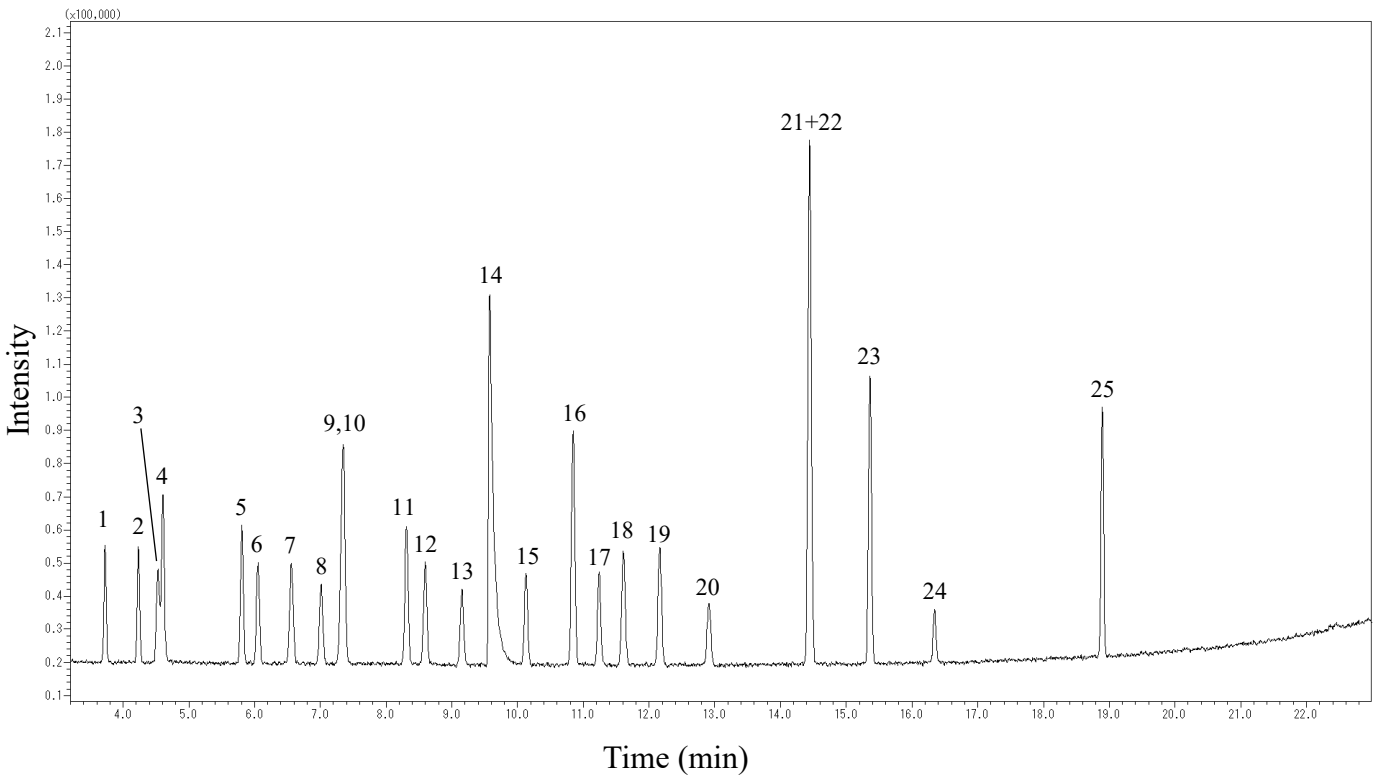


Volatile organic compounds



Conditions

System : GC-MS system
Column : InertCap AQUATIC (GL Sciences Inc.)
 0.25 mm I.D. x 30 m df = 1.0 µm
Col. Cat. No. : 1010-29145
Column Temp. : 40 °C (1 min) - 5 °C/min - 100 °C
 - 10 °C/min - 200 °C
Carrier Gas : He 30 cm/sec
Injection : Split 50:1
 200 °C
Detection : GC/MS Scan [*m/z*= 45-250]
 Interface Temp. 200 °C
 Ion Source Temp. 200 °C
Sample Size : 1 µL
 100 µg/mL in Methanol
 (1,4-Dioxane only 1000 µg/mL)

Analyte :

- | | |
|-----------------------------------|----------------------------------|
| 1. 1,1-Dichloroethene | 13. Bromodichloromethane |
| 2. Dichloromethane | 14. 1,4-Dioxane |
| 3. trans-1,2-Dichloroethene | 15. cis-1,3-Dichloro-1-propene |
| 4. Methyl tert-butyl ether (MTBE) | 16. Toluene |
| 5. cis-1,2-Dichloroethene | 17. Tetrachloroethene |
| 6. Chloroform | 18. trans-1,3-Dichloro-1-propene |
| 7. 1,1,1-Trichloroethane | 19. 1,1,2-Trichloroethane |
| 8. Carbon Tetrachloride | 20. Dibromochloromethane |
| 9. Benzene | 21. p-Xylene |
| 10. 1,2-Dichloroethane | 22. m-Xylene |
| 11. Trichloroethene | 23. o-Xylene |
| 12. 1,2-Dichloropropane | 24. Bromoform |
| | 25. 1,4-Dichlorobenzene |