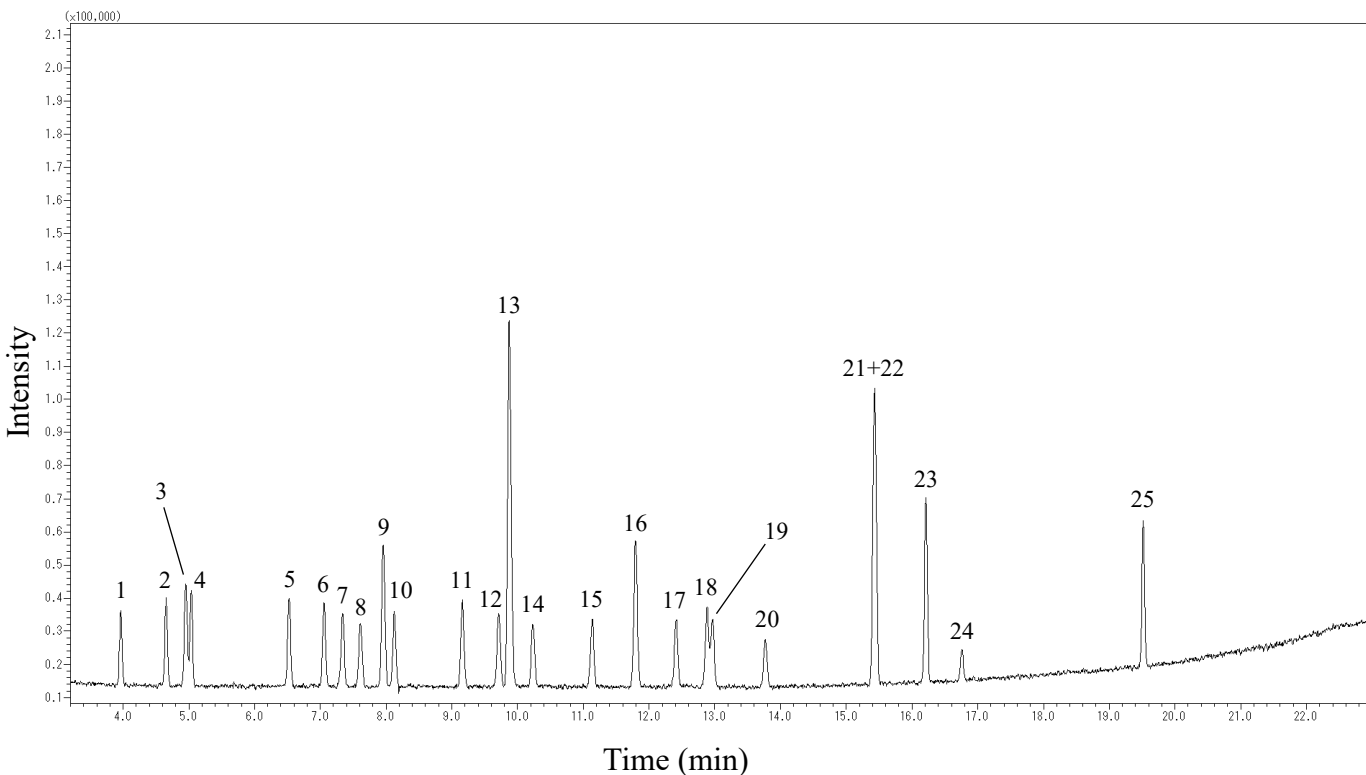


# Volatile organic compounds



## Conditions

**System** : GC-MS system  
**Column** : InertCap 624MS (GL Sciences Inc.)  
 0.25 mm I.D. x 30 m df = 1.4 µm  
**Col. Cat. No.** : 1010-64646  
**Column Temp.** : 40 °C (1 min) - 5 °C/min - 100 °C  
 - 10 °C/min - 200 °C  
**Carrier Gas** : He 30 cm/sec  
**Injection** : Split 50:1  
 200 °C  
**Detection** : GC/MS Scan [*m/z*= 45-250]  
 Interface Temp. 250 °C  
 Ion Source Temp. 200 °C  
**Sample Size** : 1 µL  
 100 µg/mL in Methanol  
 (1,4-Dioxane only 1000 µg/mL)

## Analyte :

- |                                   |                               |
|-----------------------------------|-------------------------------|
| 1. 1,1-Dichloroethylene           | 13. Bromodichloromethane      |
| 2. Dichloromethane                | 14. 1,4-Dioxane               |
| 3. trans-1,2-Dichloroethylene     | 15. cis-1,3-Dichloropropene   |
| 4. Methyl tert-butyl ether (MTBE) | 16. Toluene                   |
| 5. cis-1,2-Dichloroethylene       | 17. Tetrachloroethylene       |
| 6. Chloroform                     | 18. trans-1,3-Dichloropropene |
| 7. Carbon Tetrachloride           | 19. 1,1,2-Trichloroethane     |
| 8. 1,1,1-Trichloroethane          | 20. Dibromochloromethane      |
| 9. Benzene                        | 21. p-Xylene                  |
| 10. 1,2-Dichloroethane            | 22. m-Xylene                  |
| 11. Trichloroethylene             | 23. o-Xylene                  |
| 12. 1,2-Dichloropropane           | 24. Bromoform                 |
|                                   | 25. 1,4-Dichlorobenzene       |