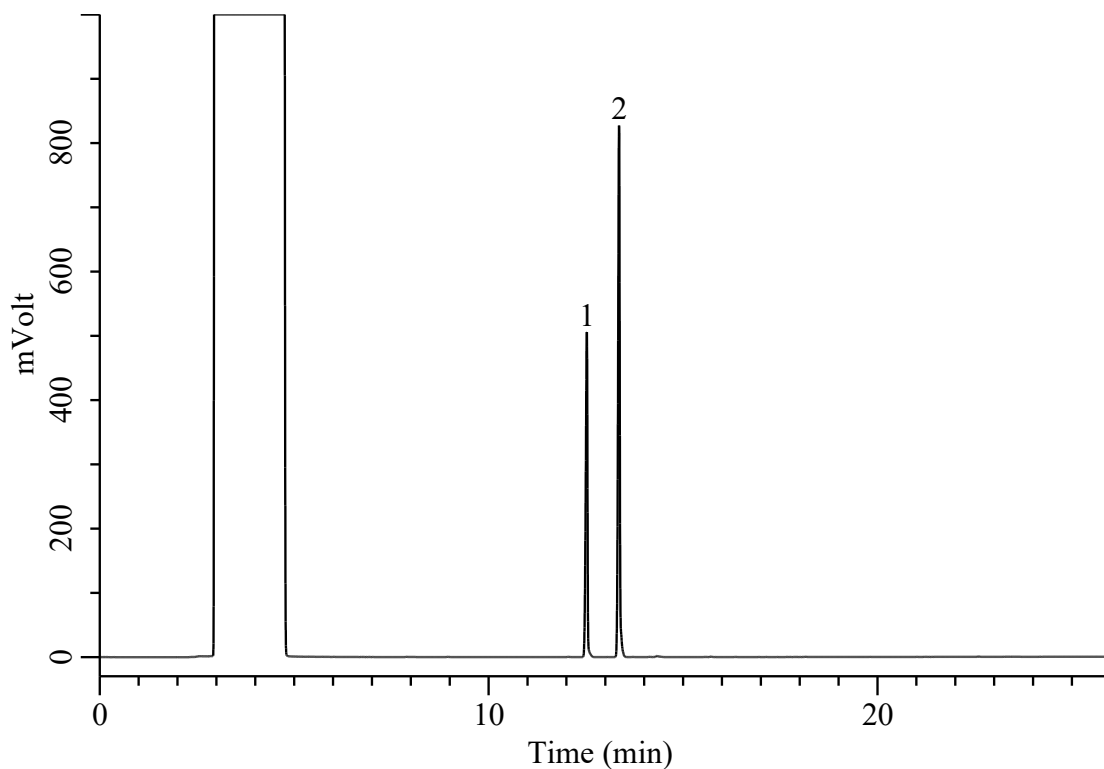


Analysis of Allyl glycidyl ether



Conditions

System : GC-4000 Plus /FID
Column : InertCap Pure-WAX (GL Sciences Inc.)
 : 0.25 mm I.D. x 30 m df = 0.25 μ m
Col. Cat. No. : 1010-68142
Col. Temp. : 40 °C (1 min) - 5 °C/min - 150 °C (3 min)
Carrier Gas : He 1.0 mL/min , Constant Flow
Injection : Splitless (2 min)
 : 200 °C
Detection : FID Auto Range
 : 200 °C
Sample : Standard
Sample Size : 1 μ L
 : Analyte in Acetone

Analyte

1. Allyl glycidyl ether 20 ppm (v/v)
 2. *p*-Bromofluorobenzene 10 ppm (v/v)