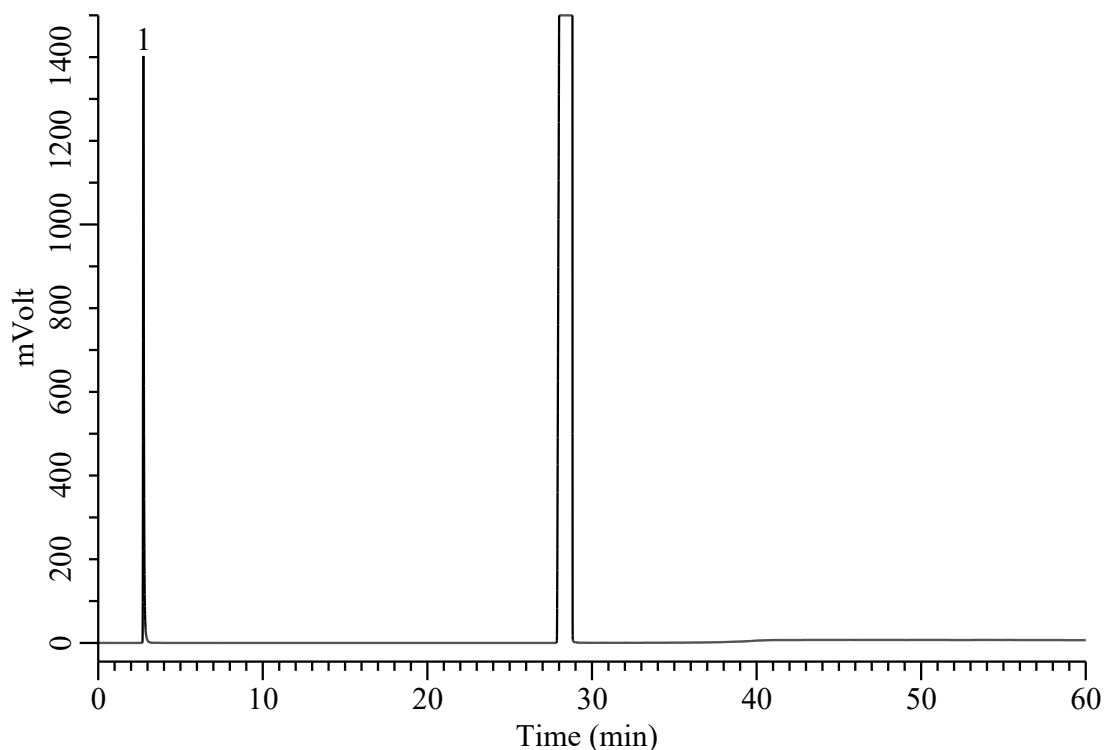


Analysis of Residual solvents in pharmaceuticals (Class 2E)



Conditions

System : GC-4000 Plus /FID
Column : InertCap Pure-WAX (GL Sciences Inc.)
 : 0.32 mm I.D. x 30 m df = 0.25 μ m
Col. Cat. No. : 1010-68242
Col. Temp. : 50 °C (20 min) - 6 °C/min - 165 °C (20 min)
Carrier Gas : He 2.2 mL/min , Constant Flow
Injection : Split 1 : 20
 : 140 °C
Detection : FID Auto Range
 : 250 °C
Sample : Japanese Pharmacopoeia Residual Solvent
 : Class 2E Standard
Sample Size : 1 μ L
 : Analyte in Dimethyl sulfoxide

Analyte

1. Cyclopentyl methyl ether 0.7 % (w/w)