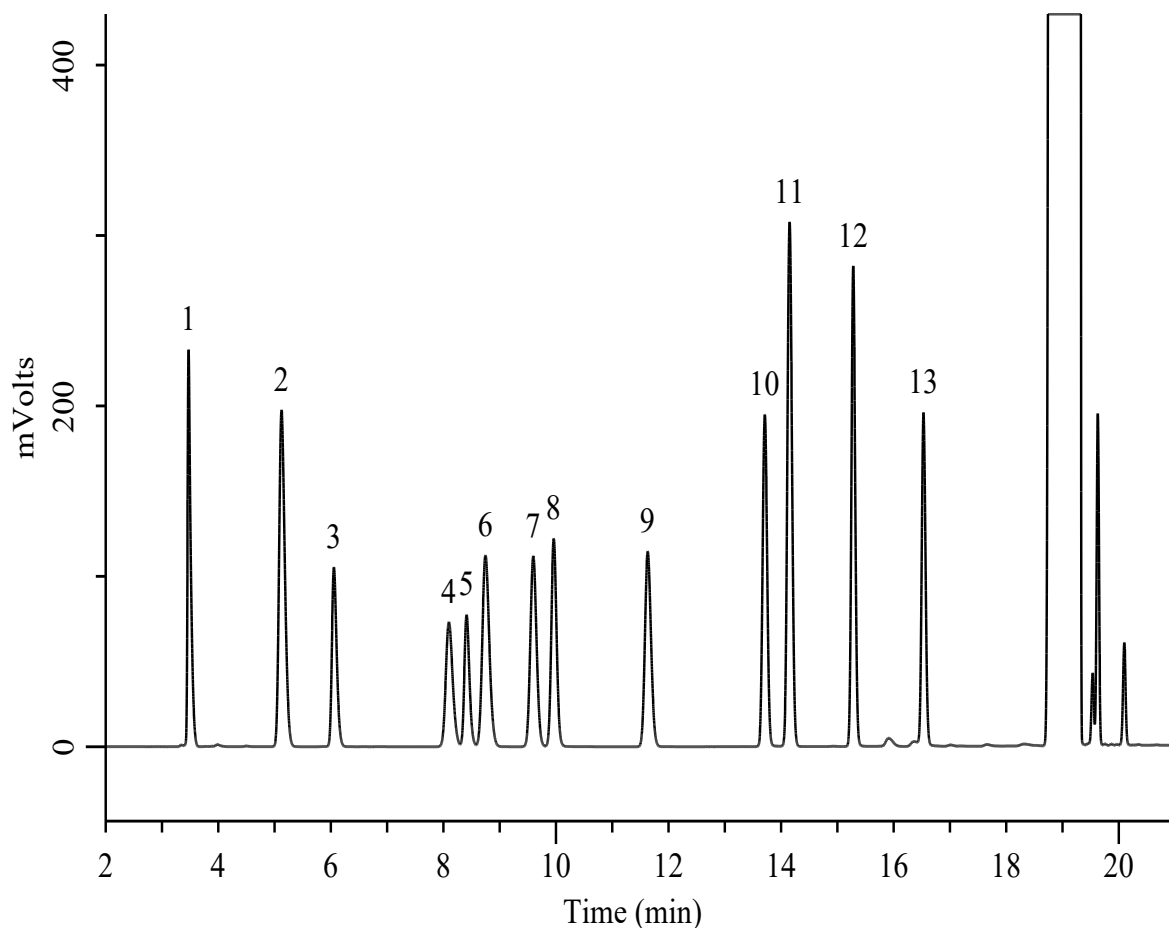


## Organic Solvents



### Conditions

**System** : GC-4000 Plus/FID  
**Column** : InertCap WAX (GL Sciences Inc.)  
 0.32 mm I.D. x 60 m df = 1.0  $\mu$ m  
**Col. Cat. No.** : 1010-67265  
**Col. Temp.** : 55 °C (9 min) - 10 °C/min - 215 °C (0 min)  
**Carrier Gas** : N<sub>2</sub> 149 kPa (3.0 mL/min) , Constant Press.  
**Injection** : Split 15:1  
 230 °C  
**Detection** : FID Auto Range  
 230 °C  
**Sample Size** : 1000  $\mu$ g/mL in 1-Methoxy-2-propyl acetate  
 (Propylene glycol monomethyl ether acetate)  
 2.0  $\mu$ L

### Analyte:

1. *n*-Hexane
2. Methylcyclohexane
3. Acetone
4. Ethyl acetate
5. Methanol
6. 2-Butanone (Methyl ethyl ketone)
7. 2-Propanol (Isopropyl alcohol)
8. Ethanol
9. *n*-Propyl acetate
10. 1-Propanol
11. Toluene
12. 2-Methyl-1-propanol (Isobutyl alcohol)
13. 1-Methoxy-2-propanol  
(Propylene glycol monomethyl ether)