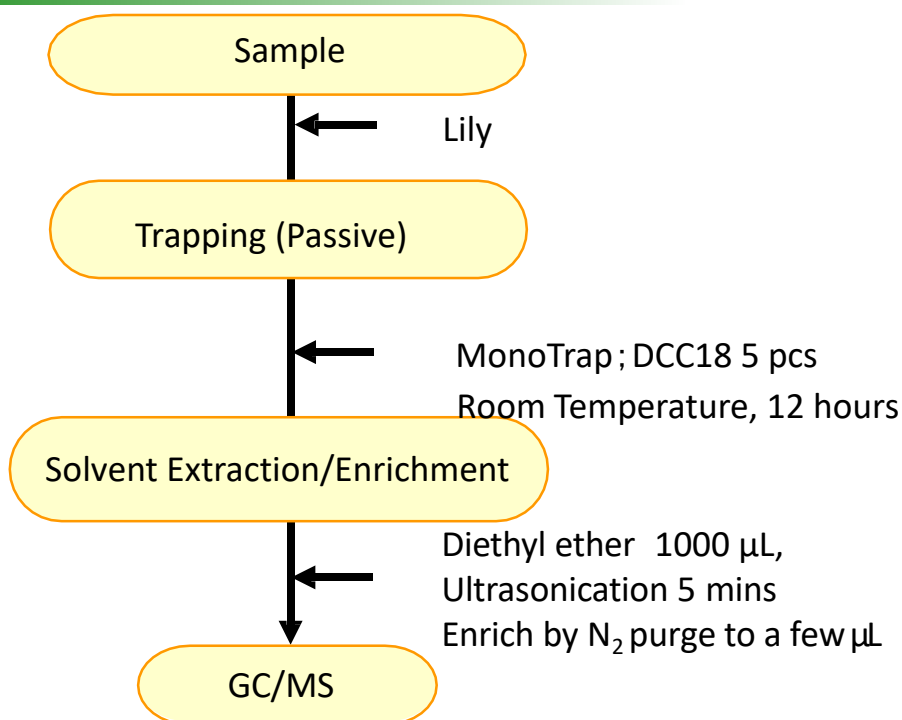


Easy Enrichment of Lily Fragrance by Passive Method with MonoTrap

MonoTrap is a hybrid novel adsorbent that combines a large surface area and the properties of silica gel, activated carbon, and ODS. Due to the large surface area of porous silica and the adsorption effect caused by the inclusion of activated carbon, a high collection efficiency is obtained. Therefore, high-sensitivity analysis can be performed in a short time. In this study, we used MonoTrap DCC18 (with activated carbon) to perform simple enrichment analyses of the fragrance components of the glasses. Passive sampling was performed by placing more than one MonoTrap inside a sac-like teddleback. (For dedicated teddlebacks, see separately). The highly inert WAX-column InertCap Pure-WAX is the optimal column for fragrance components analyses. It is recommended to use this medicine in conjunction with MonoTrap. Column :InertCap Pure-WAX(Cat.1010-68142) 0.25 mm I.D. × 30m df=0.25 μm

Protocol



③ MT Extract Cup with Vial
(Start UP-Kit)

MonoTrap Series Line-up

cat.No	Description	Shape	Size	Active Carbon	Functional Group
1050-72101	MonoTrap DCC18	Disk	O.D.10mmx thick 1mm	Yes	C18
1050-72201	MonoTrap RCC18	Rod	5mm	Yes	C18
1050-71101	MonoTrap DSC18	Disk	O.D.10mmx thick 1mm	No	
1050-71201	MonoTrap RSC18	Rod	5mm	No	C18



RCC18



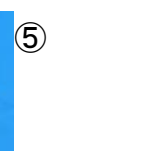
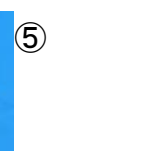
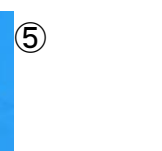
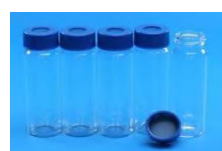
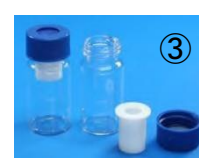
DSC18

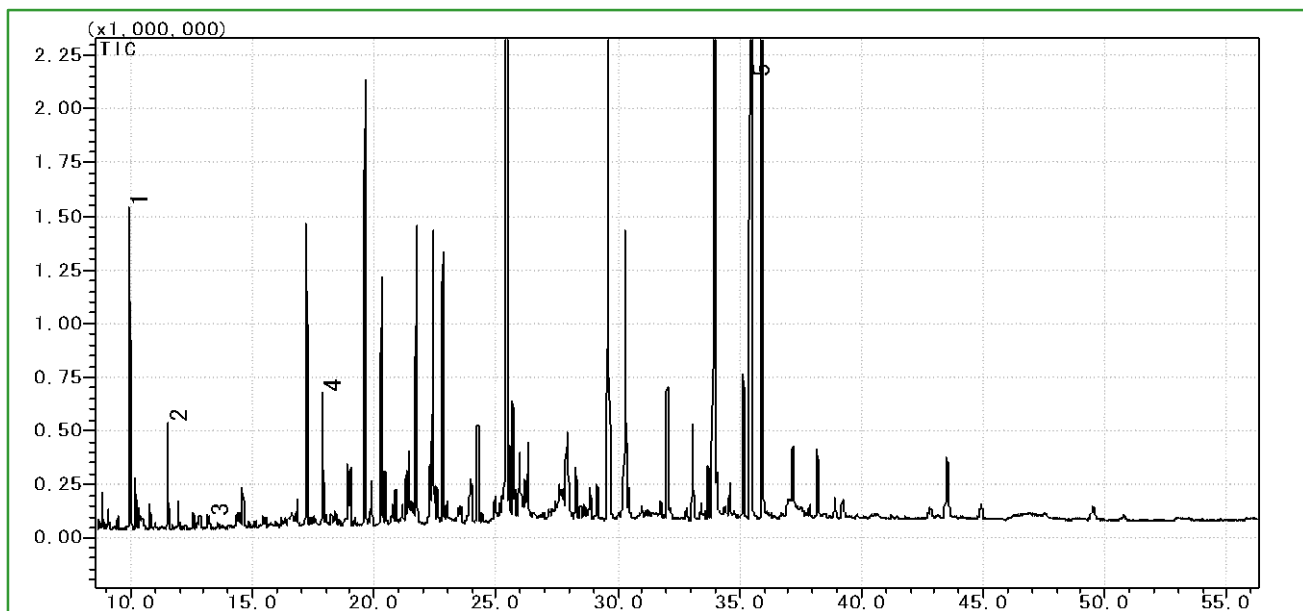


RSC18

MonoTrap Convenient MonoTrap Start-UP-KIT

	Description	Qty.
①	MT Holder	5
②	MT Stand	1
③	MT Extract Cup with Vial (20 mL)	5
④	Clean Pin Hole Septum with vial (40 mL)	5
⑤	200μ L Glass Insert (Flat Bottom)	40
⑥	MonoTrap DCC18	20
⑦	MonoTrap RCC18	20
⑧	MonoTrap DSC18	20
⑨	MonoTrap RSC18	20





GC Condition

System : SHIMADZU GC-2010, GCMS-QP2010

Column : **InertCap Pure-WAX**(Cat.1010-68142)
0.25mmI.D. × 30m df=0.25 μm

Column Temp : 70 °C → 4 °C/min → 220 °C (30 min)

Carrier Gas : He 90 kPa

Injection : Split 1:10 , 1 μL 250 °C

Detection : MS Scan (*m/z* 50-450)

- 1 β-Linalool
- 2 Clorius
- 3 β-Farnesene
- 4 trans-Geraniol
- 5 Benzyl Benzoate

* Identification result of standards

Ultra inert WAX column **InertCap Pure-WAX** is highly recommended to analyze aromatic compounds together with **MonoTrap**

GL Sciences disclaims any and all responsibility for any injury or damage which may be caused by this data directly or indirectly. We reserve the right to amend this information or data at any time and without any prior announcement.

GL Sciences, Inc. Japan

22-1 Nishishinjuku 6-Chome
Shinjuku-ku, Tokyo,
163-1130, Japan
Phone: +81-3-5323-6620
Fax: +81-3-5323-6621
Email: world@glsc.co.jp
Web: www.glsciences.com

GL Sciences B.V.

De Sleutel 9
5652 AS Eindhoven
The Netherlands
Phone: +31 (0)40 254 95 31
Email: info@glsciences.eu
Web: www.glsciences.eu

GL Sciences (ShangHai) Ltd.

Tower B, Room 2003,
Far East International Plaza,
NO,317 Xianxia Road,
Changning District.
Shanghai, China P.C. 200051
Phone: +86 (0)21-6278-2272
Email: contact@glsciences.com.cn
Web: www.glsciences.com.cn

GL Sciences, Inc. USA

4733 Torrance Blvd. Suite 255
Torrance, CA 90503
Phone: 310-265-4424
Fax: 310-265-4425
Email: info@glsciencesinc.com
Web: www.glsciencesinc.com

International Distributors

Visit our Website at:

<https://www.glsciences.com/company/distributor.html>