

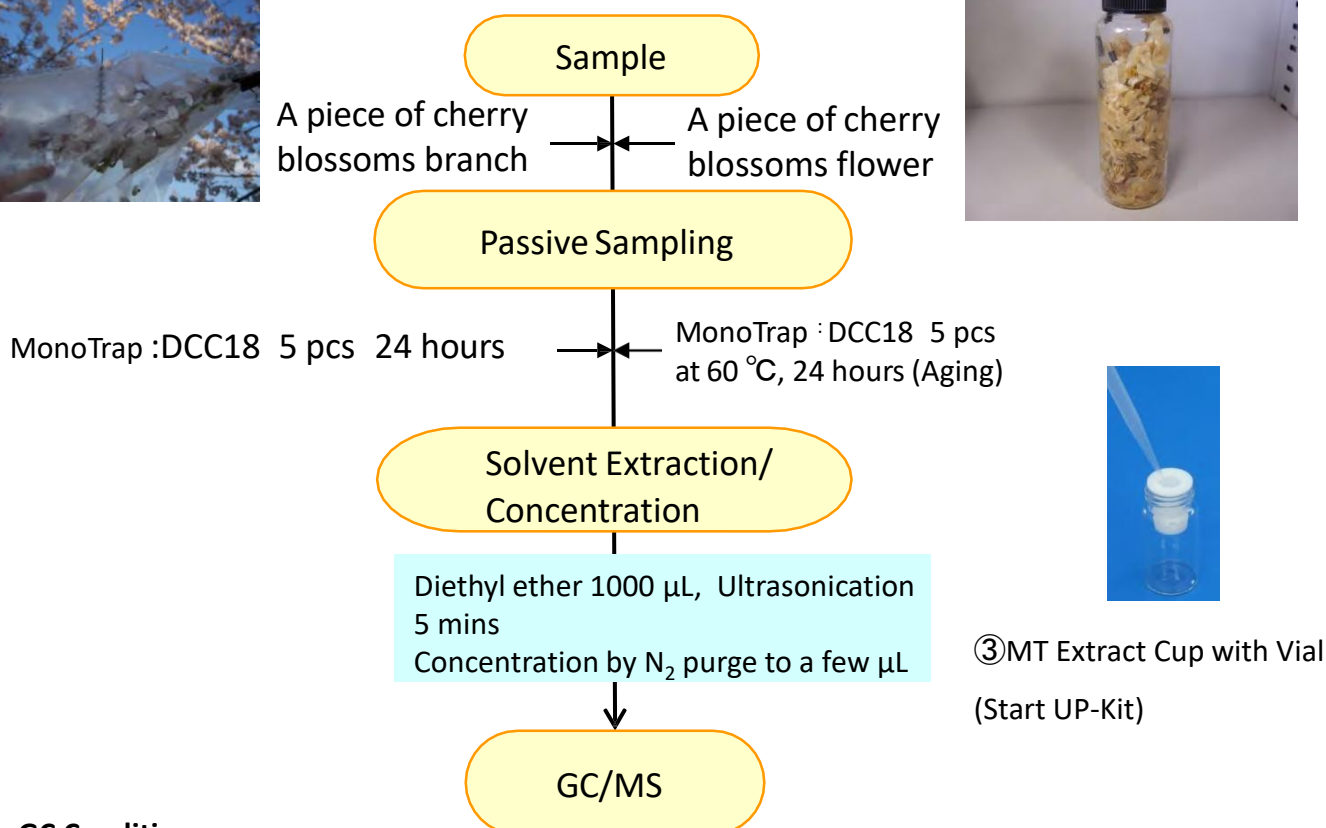
MonoTrap is a hybrid novel adsorbent that combines a large surface area and the properties of silica gel, activated carbon, and ODS. Due to the large surface area of porous silica and the adsorption effect caused by the inclusion of activated carbon, a high collection efficiency is obtained. Therefore, high-sensitivity analysis can be performed in a short time. In the case of flowers or the like, the fragrance component changes over time (ripening). To analyze this change in a simple method, we used MonoTrap DCC18 (with activated carbon) to perform simple enrichment analyses of the fragrance components of cherry flowers and cherry flowers ripened by prolonged warming to track the changes in the fragrance components. Using MonoTrap DCC18, we identified Coumarine and others that were not identified in live flowers by ripening. This Coumarine is an aroma produced by salting and ripening cherry flowers. It is actually used to scent Japanese food cherry rice cake.

## Protocol

### Cherry Blossoms



### Aging



### GC Condition

**System** : SHIMADZU GC-2010, GCMS-QP2010

**Column** : **InertCap Pure-WAX** (Cat.No. 1010-68142)

0.25 mm I.D. × 30 m df=0.25 µm

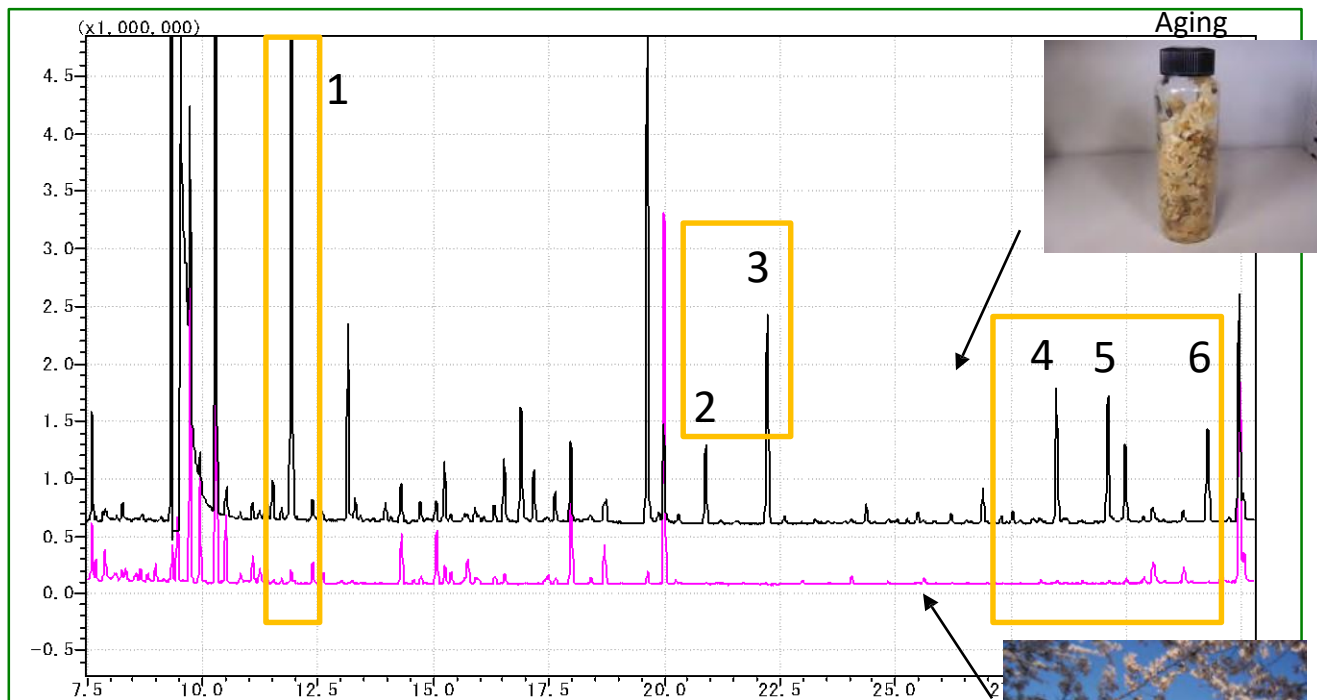
**Column Temp** : 40 °C (5min)→4 °C/min→180 °C→20 °C/min→250 °C (5 min)

**Carrier Gas** : He 120 kPa

**Injection** : Split 1:10, 1 µL

**Detection** : MS Scan (*m/z*: 40-350)

Ultra inert WAX column **InertCap Pure-WAX** is highly recommended to analyze aromatic compounds together with **MonoTrap**

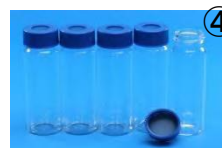


- 1 Clorius
  - 2 2,6-Dimethyl-3,7-octadiene-2,6-diol
  - 3 p-Anisaldehyde
  - 4 3,5-Dimethoxybenzaldehyde
  - 5 8-Hydroxylinalool
  - 6 Coumarine
- Red ••• Identification result of standards

Sample

**MonoTrap Convenient MonoTrap Start-UP-KIT**

	Description	Qty.
①	MT Holder	5
②	MT Stand	1
③	MT Extract Cup with Vial (20 mL)	5
④	Clean Pin Hole Septum with vial (40 mL)	5
⑤	200µ L Glass Insert (Flat Bottom)	40
⑥	MonoTrap DCC18	20
⑦	MonoTrap RCC18	20
⑧	MonoTrap DSC18	20
⑨	MonoTrap RSC18	20



GL Sciences disclaims any and all responsibility for any injury or damage which may be caused by this data directly or indirectly. We reserve the right to amend this information or data at any time and without any prior announcement.

**GL Sciences, Inc. Japan**

22-1 Nishishinjuku 6-Chome  
Shinjuku-ku, Tokyo,  
163-1130, Japan  
Phone: +81-3-5323-6620  
Fax: +81-3-5323-6621  
Email: [world@glsc.co.jp](mailto:world@glsc.co.jp)  
Web: [www.glsciences.com](http://www.glsciences.com)

**GL Sciences B.V.**

De Sleutel 9  
5652 AS Eindhoven  
The Netherlands  
Phone: +31 (0)40 254 95 31  
Email: [info@glsciences.eu](mailto:info@glsciences.eu)  
Web: [www.glsciences.eu](http://www.glsciences.eu)

**GL Sciences (ShangHai) Ltd.**

Tower B, Room 2003,  
Far East International Plaza,  
NO,317 Xianxia Road,  
Changning District.  
Shanghai, China P.C. 200051  
Phone: +86 (0)21-6278-2272  
Email: [contact@glsciences.com.cn](mailto:contact@glsciences.com.cn)  
Web: [www.glsciences.com.cn](http://www.glsciences.com.cn)

**GL Sciences, Inc. USA**

4733 Torrance Blvd. Suite 255  
Torrance, CA 90503  
Phone: 310-265-4424  
Fax: 310-265-4425  
Email: [info@glsciencesinc.com](mailto:info@glsciencesinc.com)  
Web: [www.glsciencesinc.com](http://www.glsciencesinc.com)

**International Distributors**

Visit our Website at:  
<https://www.glsciences.com/company/distributor.html>

