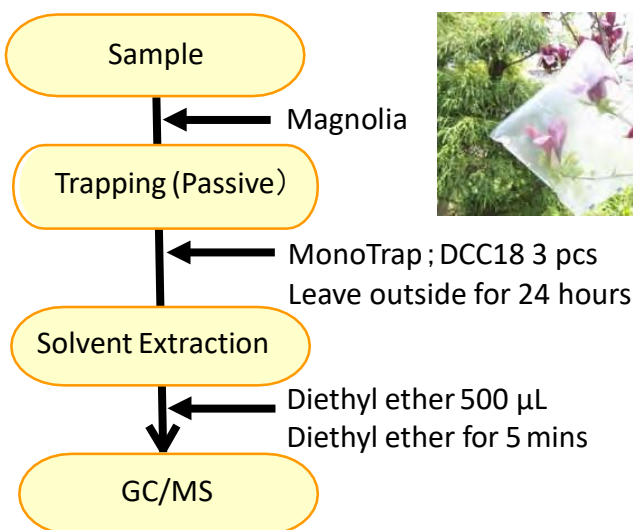


MonoTrap is a hybrid novel adsorbent that combines a large surface area and the properties of silica gel, activated carbon, and ODS. The large surface area of porous silica and the adsorbent effect due to the inclusion of activated carbon result in high collection efficiency. Therefore, high-sensitivity analysis can be performed in a short time. This time, we used MonoTrap DCC18 (with activated carbon) to perform simple enrichment analyses of the flavor components of moclene. Passive sampling was performed by placing more than one MonoTrap inside a sac-like tedra bag. (For dedicated tedra bags, please contact us separately.) The highly inert WAX-column InertCap Pure-WAX is the optimal column for fragrance components analyses. We recommend using this product in conjunction with MonoTrap.

Column : InertCap Pure-WAX (Cat.No. 1010-68142) 0.25 mm I.D. × 30 m df=0.25 μm

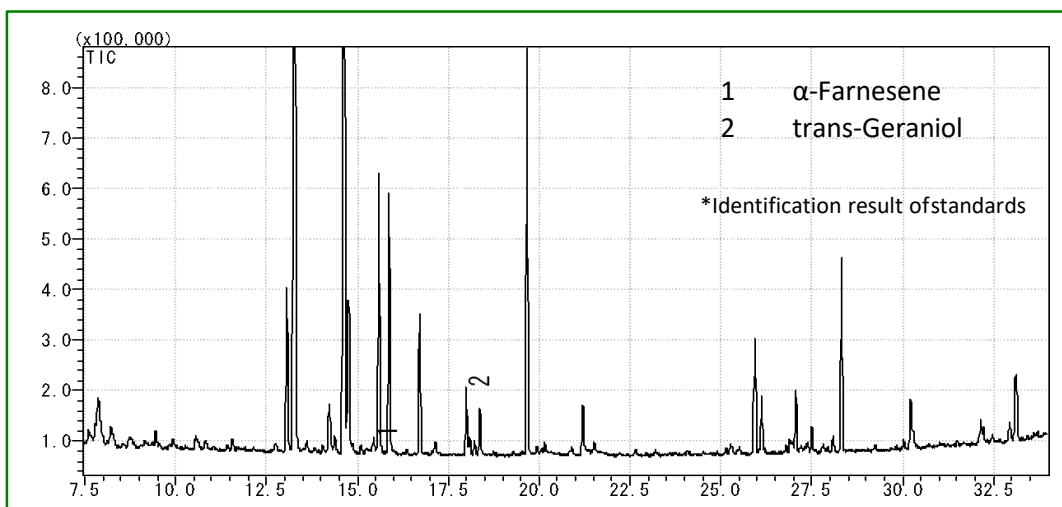
Protocol



GC Condition

System	: SHIMADZU GC-2010, GCMS-QP2010
Column	: InertCap Pure-WAX (Cat.No. 1010-68142) 0.25 mm I.D. × 30 m df=0.25 μm
Column Temp	: 70 °C → 4 °C/min → 220 °C (30 min)
Carrier Gas	: He 90 kPa
Injection	: Splitless, 1 μL 250 °C
Detection	: MS Scan (m/z;35-450)

③MT Extract Cup with Vial



GL Sciences disclaims any and all responsibility for any injury or damage which may be caused by this data directly or indirectly. We reserve the right to amend this information or data at any time and without any prior announcement.

GL Sciences, Inc. Japan

22-1 Nishishinjuku 6-Chome
Shinjuku-ku, Tokyo,
163-1130, Japan
Phone: +81-3-5323-6620
Fax: +81-3-5323-6621
Email: world@glsciences.jp
Web: www.glsciences.com

GL Sciences B.V.

De Sleutel 9
5652 AS Eindhoven
The Netherlands
Phone: +31 (0)40 254 95 31
Email: info@glsciences.eu
Web: www.glsciences.eu

GL Sciences (ShangHai) Ltd.

Tower B, Room 2003,
Far East International Plaza,
NO,317 Xianxia Road,
Changning District.
Shanghai, China P.C. 200051
Phone: +86 (0)21-6278-2272
Email: contact@glsciences.com.cn
Web: www.glsciences.com.cn

GL Sciences, Inc. USA

4733 Torrance Blvd. Suite 255
Torrance, CA 90503
Phone: 310-265-4424
Fax: 310-265-4425
Email: info@glsciencesinc.com
Web: www.glsciencesinc.com

International Distributors

Visit our Website at:

<https://www.glsciences.com/company/distributor.html>