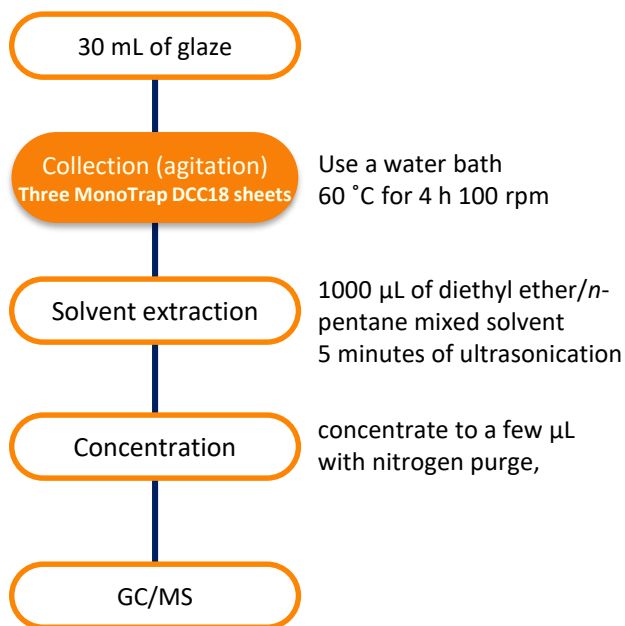


# Simple Concentration and Analysis of Flavor Components - Using Sorptive Media MonoTrap

Simple concentration and analysis of flavor components in noodles was made using MonoTrap DCC18 (with activated carbon). Due to the large surface area and large sample loadings, together with solvent extraction MonoTrap DCC18 provides considerable information with high sensitivity.

## Preliminary processing procedure



### GC Conditions

<b>System</b>	: GC - MS
<b>Column</b>	: InertCap Pure-WAX 0.25 mm I.D. x 30 m df = 0.25 µm
<b>Col. Temp.</b>	: 50 °C (5 min) - 6 °C/min - 250 °C
<b>Carrier Gas</b>	: He 90 kPa
<b>Injection</b>	: Splitless 250 °C
<b>Detection</b>	: MS Scan ( <i>m/z</i> 35-400)
<b>Sample Size</b>	: 1 µL

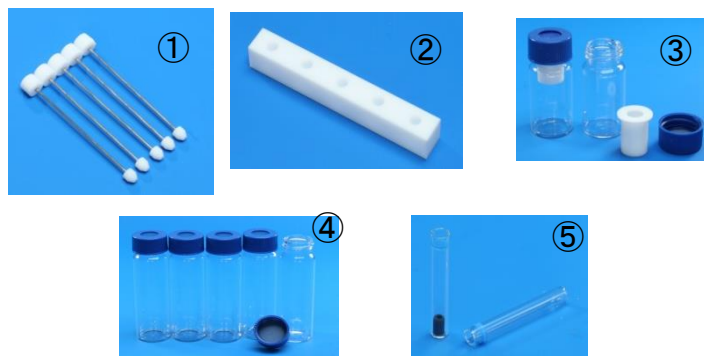
## MonoTrap Series

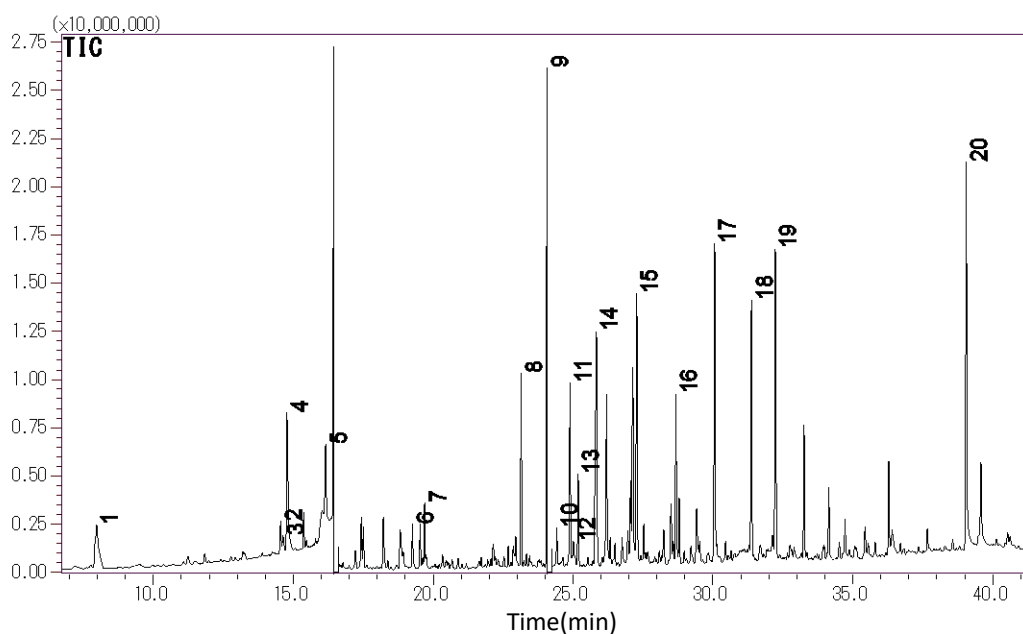
Cat.No	Description	Configuration	Size	Activated Carbon	Functional Group
1050-72101	MonoTrap DCC18	Disk	O.D.10mmx thick 1mm	Yes	C18
1050-72201	MonoTrap RCC18	Rod	O.D.2.9 mmxI.D.1mm x Height 5mm	Yes	C18
1050-71101	MonoTrap DSC18	Disk	O.D.10mmx thick 1mm	No	
1050-71201	MonoTrap RSC18	Rod	O.D.2.9 mmxI.D.1mm x Height 5mm	No	C18



## Initial use of the convenient MonoTrap and overview of the start-up kit

	Description	Qty.
①	MT Holder	5
②	MT Stand	1
③	MT Extract Cup with Vial (20 mL)	5
④	Clean Pin Hole Septum with vial(40 mL)	5
⑤	200 µL glass insert (flat bottom)	40
⑥	MonoTrap DCC18	20
⑦	MonoTrap RCC18	20
⑧	MonoTrap DSC18	20
⑨	MonoTrap RSC18	20





- |                            |                                      |
|----------------------------|--------------------------------------|
| 1. Isopentyl alcohol       | 11. <i>p</i> -Creosol                |
| 2. 1-Octen-3-ol            | 12. Maltol                           |
| 3. 1-Heptanethiol          | 13. Methyl pyrrol-2-yl ketone        |
| 4. Acetic acid             | 14. Phenol                           |
| 5. Benzaldehyde            | 15. <i>m</i> -Cresol                 |
| 6. 2-Furanmethanol         | 16. 3,4-Xylenol                      |
| 7. 3-Cyclohexene-1-ethanol | 17. Pyrogallol 1,3-dimethyl ether    |
| 8. <i>o</i> -Methoxyphenol | 18. 1,2,4-Trimethoxybenzene          |
| 9. Phenylethyl Alcohol     | 19. 1,2,3-Trimethoxy-5-methylbenzene |
| 10. 2-Phenyl-2-butenal     | 20. <i>n</i> -Hexadecanoic acid      |

\*According to library search results

GL Sciences disclaims any and all responsibility for any injury or damage which may be caused by this data directly or indirectly. We reserve the right to amend this information or data at any time and without any prior announcement.

#### **GL Sciences, Inc. Japan**

22-1 Nishishinjuku 6-Chome  
Shinjuku-ku, Tokyo,  
163-1130, Japan  
Phone: +81-3-5323-6620  
Fax: +81-3-5323-6621  
Email: [world@glsc.co.jp](mailto:world@glsc.co.jp)  
Web: [www.glsciences.com](http://www.glsciences.com)

#### **GL Sciences B.V.**

De Sleutel 9  
5652 AS Eindhoven  
The Netherlands  
Phone: +31 (0)40 254 95 31  
Email: [info@glsciences.eu](mailto:info@glsciences.eu)  
Web: [www.glsciences.eu](http://www.glsciences.eu)

#### **GL Sciences, Inc. USA**

4733 Torrance Blvd. Suite 255  
Torrance, CA 90503  
Phone: 310-265-4424  
Fax: 310-265-4425  
Email: [info@glsciencesinc.com](mailto:info@glsciencesinc.com)  
Web: [www.glsciencesinc.com](http://www.glsciencesinc.com)

#### **GL Sciences (ShangHai) Ltd.**

Tower B, Room 2003,  
Far East International Plaza,  
NO,317 Xianxia Road,  
Changning District.  
Shanghai, China P.C. 200032  
Phone: +86 (0)21-6278-2272  
Email: [contact@glsciences.com.cn](mailto:contact@glsciences.com.cn)  
Web: [www.glsciences.com.cn](http://www.glsciences.com.cn)

#### **International Distributors**

Visit our Website at [www.glsciences.com/distributors](http://www.glsciences.com/distributors)