

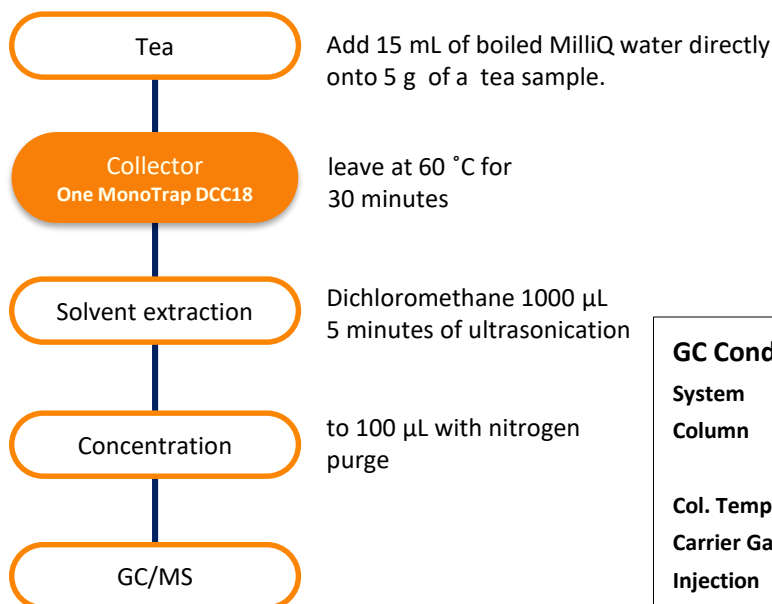
Simple Concentration Analysis of Pu-erh Tea Flavor Components - Using Sorptive Media MonoTrap

GT040

GL Sciences Inc.

MonoTrap DCC18 (with activated carbon) was used to simply concentrate and analyze the fragrance components in pu-erh tea. Caffeine, a compound with high-boiling point was detected with high sensitivity by collecting tea leaves extracted with hot water directly on a MonoTrap sampler.

Preliminary processing procedure



GC Conditions

System : GC - MS

Column : InertCap Pure-WAX 0.25 mm I.D. x 30 m
df = 0.25 µm

Col. Temp. : 40 °C (5 min) - 4 °C/min - 250 °C

Carrier Gas : He 1 mL/min

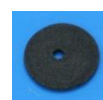
Injection : Splitless
250 °C

Detection : MS Scan (*m/z* 40-600)

Sample Size : 1 µL

MonoTrap Series

Cat.No	Description	Configuration	Size	Activated Carbon	Functional Group
1050-72101	MonoTrap DCC18	Disk	O.D.10mmx thick 1 mm	Yes	C18
1050-72201	MonoTrap RCC18	Rod	O.D.2.9 mmx I.D.1 mm x Hight 5 mm	Yes	C18
1050-71101	MonoTrap DSC18	Disk	O.D.10 mm x thick 1 mm	No	
1050-71201	MonoTrap RSC18	Rod	O.D.2.9 mm x I.D.1 mm x Hight 5 mm	No	C18



DCC18



RCC18



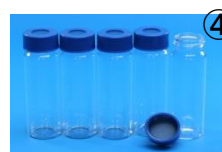
DSC18

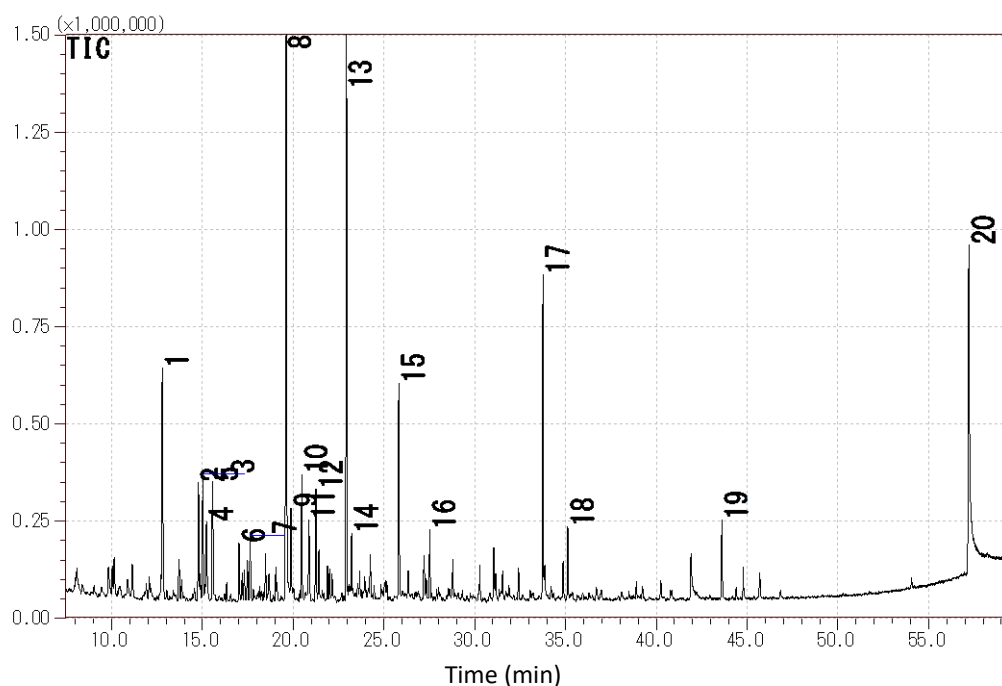


RSC18

Initial use of the convenient MonoTrap and overview of the start-up kit

	Description	Qty.
①	MT Holder	5
②	MT Stand	1
③	MT Extract Cup with Vial(20 mL)	5
④	Clean Pin Hole Septum with vial(40 mL)	5
⑤	200 µL glass insert (flat bottom)	40
⑥	MonoTrap DCC18	20
⑦	MonoTrap RCC18	20
⑧	MonoTrap DSC18	20
⑨	MonoTrap RSC18	20





- | | |
|-----------------------------|----------------------------|
| 1. Methylpyrazine | 11. 2-Acetylfuran |
| 2,3. Dimethylpyrazine | 12. Benzaldehyde |
| 4. Ethylpyrazine | 13. 2-Formyl-5-methylfuran |
| 5. 6-Methyl-5-heptene-2-one | 14. Methyl 2-furoate |
| 6. 2-Ethyl-6-methylpyrazine | 15. 2-Furanmethanol |
| 7. Trimethylpyrazine | 16. Dimethoxybenzene |
| 8. Furfural | 17. Trimethoxybenzene |
| 9. Acetol acetate | 18. Pyrrole-2-aldehyde |
| 10. 2,4-Heptadien-1-al | 19. Coumaran |
| | 20. Caffein |

* According to library search results

GL Sciences disclaims any and all responsibility for any injury or damage which may be caused by this data directly or indirectly. We reserve the right to amend this information or data at any time and without any prior announcement.

GL Sciences, Inc. Japan

22-1 Nishishinjuku 6-Chome
Shinjuku-ku, Tokyo,
163-1130, Japan
Phone: +81-3-5323-6620
Fax: +81-3-5323-6621
Email: world@glsc.co.jp
Web: www.glsciences.com

GL Sciences B.V.

De Sleutel 9
5652 AS Eindhoven
The Netherlands
Phone: +31 (0)40 254 95 31
Email: info@glsciences.eu
Web: www.glsciences.eu

GL Sciences, Inc. USA

4733 Torrance Blvd. Suite 255
Torrance, CA 90503
Phone: 310-265-4424
Fax: 310-265-4425
Email: info@glsciencesinc.com
Web: www.glsciencesinc.com

GL Sciences (ShangHai) Ltd.

Tower B, Room 2003,
Far East International Plaza,
NO,317 Xianxia Road,
Changning District.
Shanghai, China P.C. 200032
Phone: +86 (0)21-6278-2272
Email: contact@glsciences.com.cn
Web: www.glsciences.com.cn

International Distributors

Visit our Website at www.glsciences.com/distributors