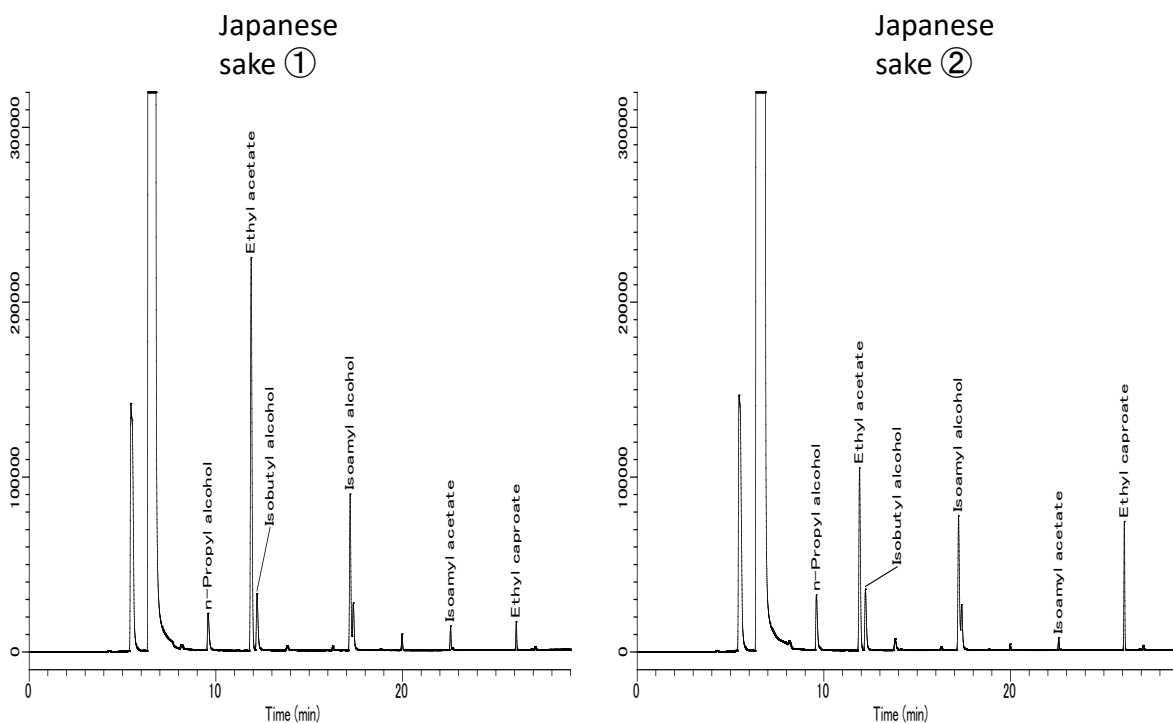


Analysis of Flavor Components in Japanese Sake - Using a Headspace Autosampler

n-Propyl alcohol, Ethyl acetate, Isobutyl alcohol, Isoamyl alcohol, Isoamyl acetate, and Ethyl caproate are all known as flavor constituents in Japanese sake and are particularly abundant among several flavor constituents. In this application two types of Japanese sake were analyzed with a headspace autosampler using a standard addition method to determine the components detailed above.

Example: Measurement of sample



Conditions

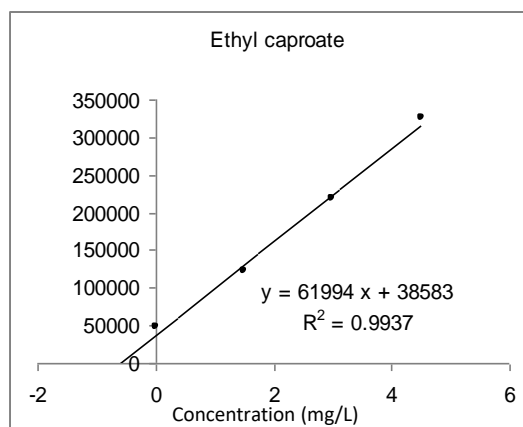
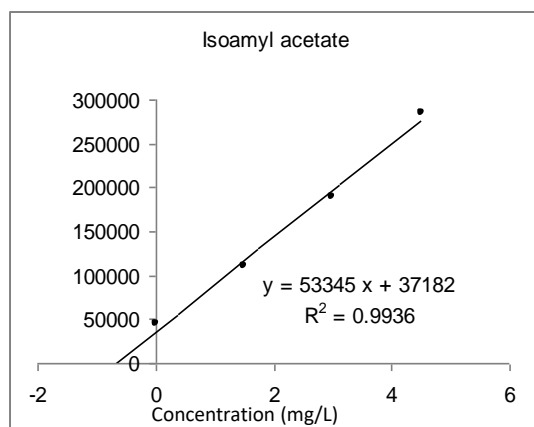
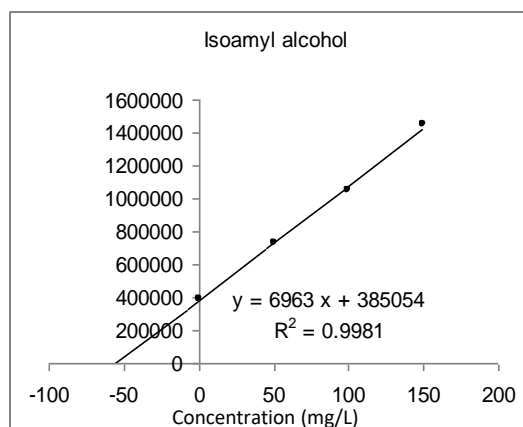
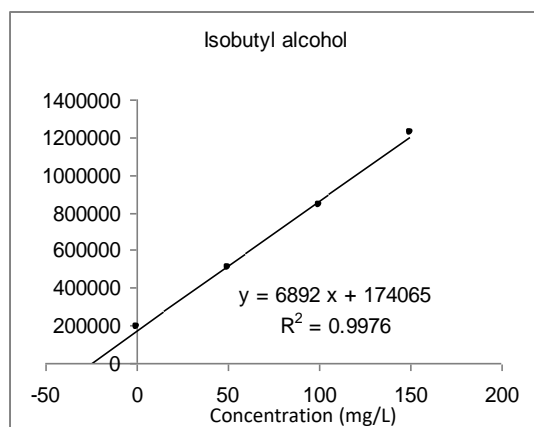
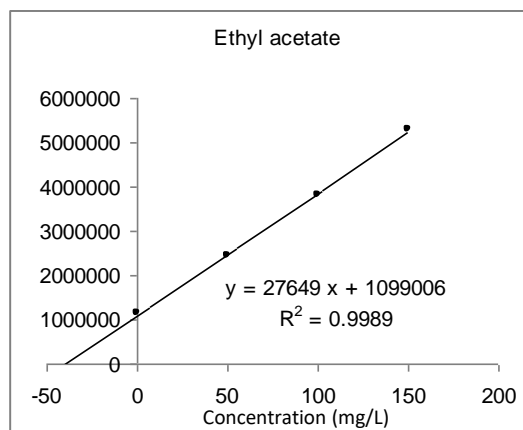
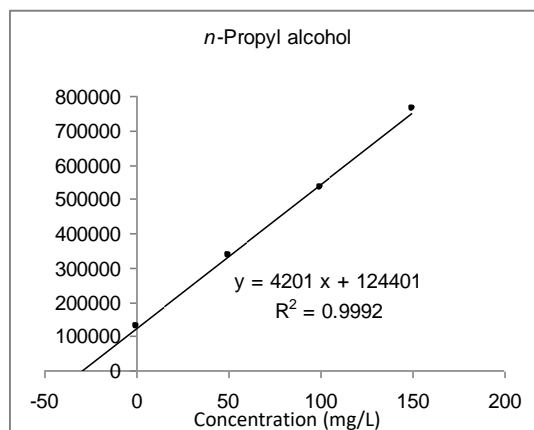
System	: GC - FID - HS (Tekmar HT3)
Column	: AQUATIC 0.32 mm I.D. x 60 m df = 1.40 μ m
Col.Temp.	: 40 °C (5 min) - 5 °C/min - 100 °C - 10 °C/min - 200 °C (13 min)
Carrier Gas	: He 100 kPa
Detection	: FID Range 10 ¹⁰ 220 °C

HS Conditions

Sample.Temp.	: 50 °C
Sample Equil. Time	: 15 min
Mixing Time	: 10 min
Mixing Stabilize Time	: 5 min
Loop Size	: 0.5 mL
Injection	: Direct

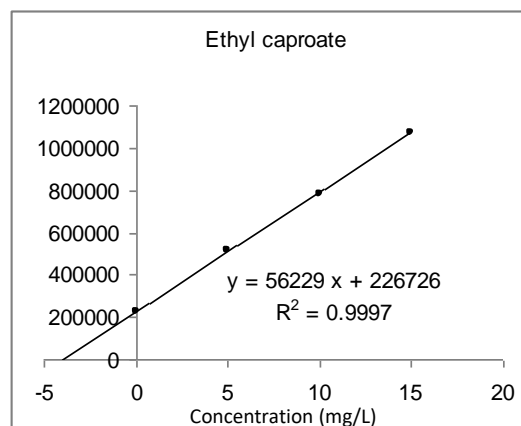
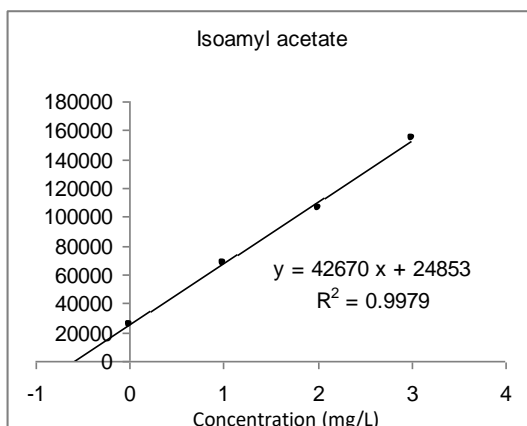
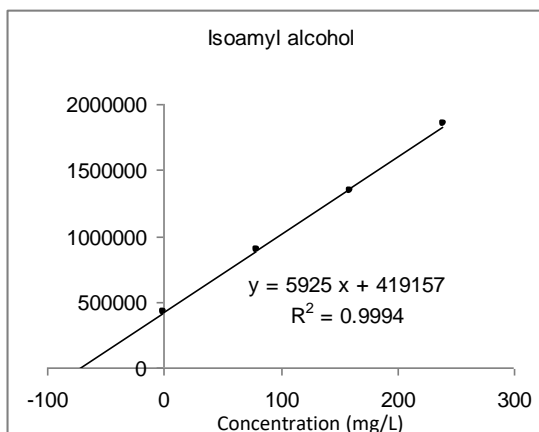
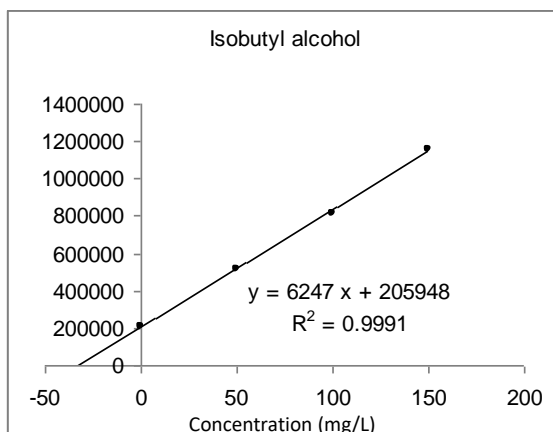
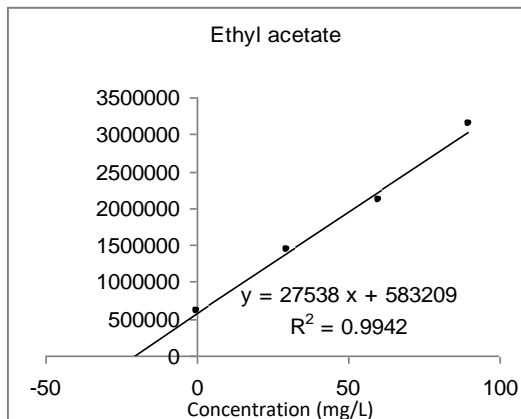
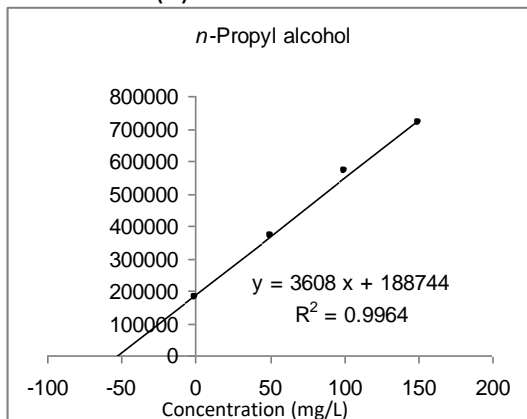
Calibration curves

Japanese sake (1) standard addition method



Calibration curves

Japanese sake (2) standard addition method



GL Sciences disclaims any and all responsibility for any injury or damage which may be caused by this data directly or indirectly. We reserve the right to amend this information or data at any time and without any prior announcement.

GL Sciences, Inc. Japan

22-1 Nishishinjuku 6-Chome
Shinjuku-ku, Tokyo,
163-1130, Japan
Phone: +81-3-5323-6620
Fax: +81-3-5323-6621
Email: world@glsc.co.jp
Web: www.glsciences.com

GL Sciences B.V.

De Sleutel 9
5652 AS Eindhoven
The Netherlands
Phone: +31 (0)40 254 95 31
Email: info@glsciences.eu
Web: www.glsciences.eu

GL Sciences, Inc. USA

4733 Torrance Blvd. Suite 255
Torrance, CA 90503
Phone: 310-265-4424
Fax: 310-265-4425
Email: info@glsciencesinc.com
Web: www.glsciencesinc.com

GL Sciences (ShangHai) Ltd.

Tower B, Room 2003,
Far East International Plaza,
NO.317 Xianxia Road,
Changning District.
Shanghai, China P.C. 200032
Phone: +86 (0)21-6278-2272
Email: contact@glsciences.com.cn
Web: www.glsciences.com.cn

International Distributors

Visit our Website at www.glsciences.com/distributors