

# Simple Concentration and Analysis of Flavor Components in Grated Ginger - with Easy-to-use Enrichment Tool MonoTrap

## Preliminary processing procedure

Grated ginger

Commercially available tube-type 3.8 g 40 mL vials

Collection (HS)  
MonoTrap DCC181

60 °C for 2 h

Solvent extraction

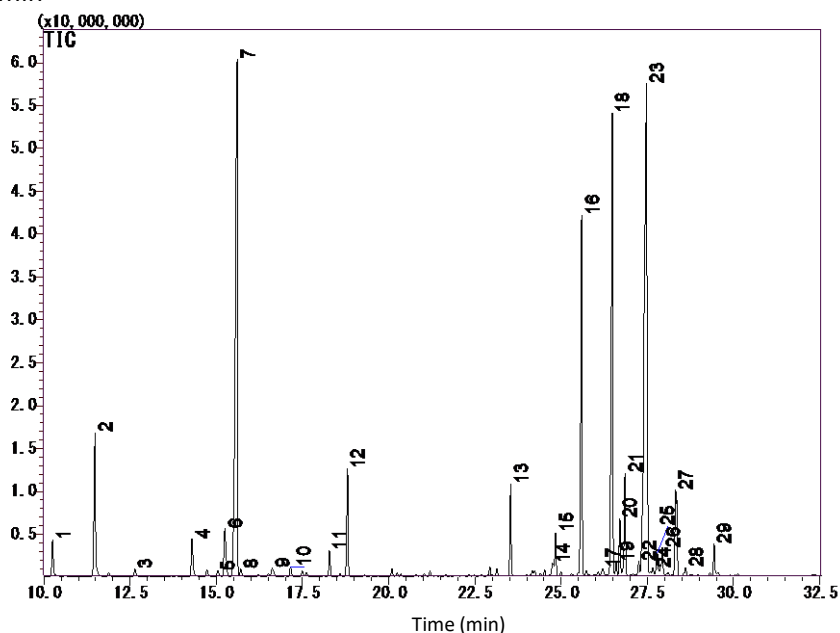
200 µL of dichloromethane  
Ultrasonication 5 min

GC-MS

### Conditions

System : GC - MS  
 Column : InertCap Pure-WAX  
 0.25 mm I.D. x 60 m df = 0.25 µm  
 Col.Temp. : 40 °C (5 min hold) - 6 °C/min - 250 °C  
 Carrier Gas : He 1.2 mL/min  
 Injection : Splitless  
 250 °C  
 Detection : MS Scan (*m/z* : 28.5 - 600)

1. α-Pinene
2. Camphene
3. β-Pinene
4. β-Myrcene
5. 2,5-Dimethylhex-5-en-3-yn-2-ol
6. D-Limonene
7. Eucalyptol
8. 1,4-Cyclohexadiene, 3-ethenyl-1,2-dimethyl-
9. Bicyclo[3.2.1]oct-2-ene, 3-methyl-4-methylene-
10. M-Cymene
11. 2-Heptanol
12. 5-Hepten-2-one, 6-methyl-
13. Linalool
14. β-Terpineol
15. 4-Terpineol
16. Cyclohexanol, 1-methyl-4-(1-methylethyl)-
17. Isobornyl formate
18. Citral
19. Cis-Carveol
20. P-menth-1-en-8-ol



21. Borneol
22. Unknown
23. Citral
24. Naphthalene, 2,3,4,4a,5,6-hexahydro-1,4a-dimethyl-7-(1-methylethyl)-
25. α-Farnesene
26. Citronellol
27. β-Sesquiphellandrene
28. 2,6-Octadien-1-ol, 3,7-dimethyl-, (Z)-

\*Standard samples are not used for qualitative analysis. Results in a library search.

GL Sciences disclaims any and all responsibility for any injury or damage which may be caused by this data directly or indirectly. We reserve the right to amend this information or data at any time and without any prior announcement.

### GL Sciences, Inc. Japan

22-1 Nishishinjuku 6-Chome  
 Shinjuku-ku, Tokyo,  
 163-1130, Japan  
 Phone: +81-3-5323-6620  
 Fax: +81-3-5323-6621  
 Email: [world@glsc.co.jp](mailto:world@glsc.co.jp)  
 Web: [www.glsciences.com](http://www.glsciences.com)

### GL Sciences B.V.

De Sleutel 9  
 5652 AS Eindhoven  
 The Netherlands  
 Phone: +31 (0)40 254 95 31  
 Email: [info@glsciences.eu](mailto:info@glsciences.eu)  
 Web: [www.glsciences.eu](http://www.glsciences.eu)

### GL Sciences, Inc. USA

4733 Torrance Blvd. Suite 255  
 Torrance, CA 90503  
 Phone: 310-265-4424  
 Fax: 310-265-4425  
 Email: [info@glsciencesinc.com](mailto:info@glsciencesinc.com)  
 Web: [www.glsciencesinc.com](http://www.glsciencesinc.com)

### GL Sciences (ShangHai) Ltd.

Tower B, Room 2003,  
 Far East International Plaza,  
 NO,317 Xianxia Road,  
 Changning District.  
 Shanghai, China P.C. 200032  
 Phone: +86 (0)21-6278-2272  
 Email: [contact@glsciences.com.cn](mailto:contact@glsciences.com.cn)  
 Web: [www.glsciences.com.cn](http://www.glsciences.com.cn)

### International Distributors

Visit our Website at [www.glsciences.com/distributors](http://www.glsciences.com/distributors)