

Simple Concentration and Analysis of Cabbage Spoilage Odor –Use of Sorptive Media Mono Trap

MonoTrap RGC18TD , a simple concentration tool was used to screen for volatile components in spoiled cabbage. At the same time sensory evaluation was performed on these odors.

Pretreatment procedure

Cabbage

And chicken, place 25 g in 100 mL vials

Decay

Allow to stand at 60 °C for a period of time (3 to 7 days) and rot

Collection (HS)
2 MonoTrap RGC18TD

At room temperature for 3 h

TD-GC-MS
Odor



60 °C for 3 days
Immediately after cutting

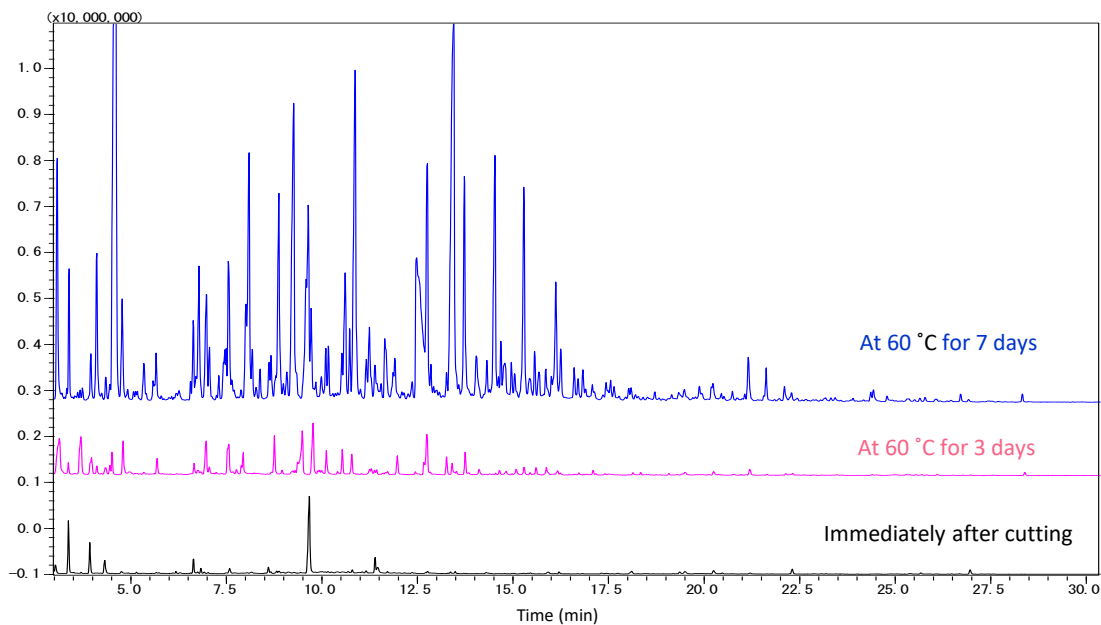


Odor-sniffing device
Sniffing pot (OP275)

Conditions

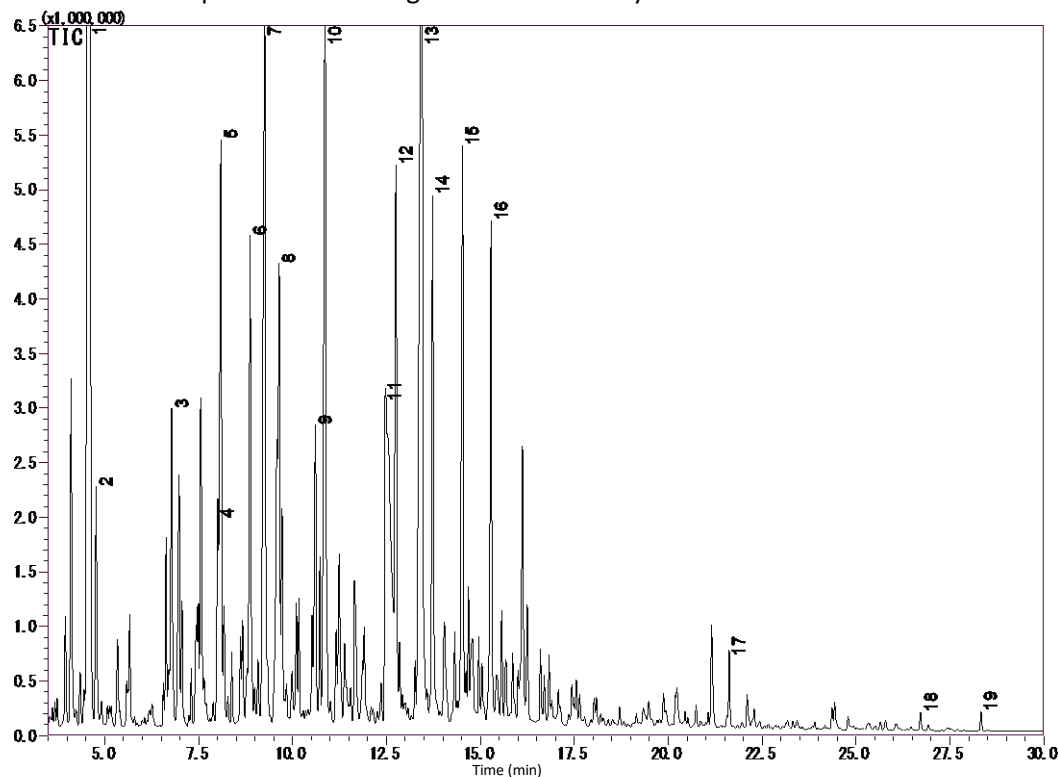
System	: GC-MS-Thermal Desorption
Column	: InertCap Pure-WAX 0.25 mm I.D. x 60 m df = 0.25 μm
Col.Temp.	: 40 °C (5 min) - 6 °C/min - 250 °C
Carrier Gas	: He 1 mL/min (constant flow)
Desorb Temp.	: 200 °C
Time	: 5 min
Flow	: 5 mL/min
Split	: Splitless
Cryo Trapping	: -150 °C
Injection Temp.	: 250 °C
Detection	: MS Scan (<i>m/z</i> : 28.5 - 600)

Comparison of volatile constituents with advancing spoilage



The outlet of the capillary column was split so that GC/MS and GC/O (GC/Olfactometry) could be measured simultaneously. Due to the splitting of the flow, the detection sensitivity is approx. 1/10th of normal. S and N based compounds can also be well detected by the effects of graphite carbon contained in the MonoTrap RGC18TD collector

Volatile components of cabbage at 60 °C for 7 days



Peak No.	Compound	Assessment of odor	Peak No.	Compound	Assessment of odor
1.	Dimethyl disulfide	Rotten egg	11.	Acetic acid	Sour
2.	Hexanal	Greenly	12.	1-Octen-3-ol e alcohol	
3.	2-Heptanone		13.	Hexane, 1-nitro-	Metal
4.	1-Butanol, 2-methyl-	Raw garbage	14.	Benzaldehyde	
5.	1-Butanol, 3-methyl-	Bitter	15.	4-Hexen-1-ol	
6.	1-Pentanol	Greenly	16.	Benzonitrile	Bitter
7.	Hexanenitrile	Bitter	17.	S-Methyl methanethiosulphonate	Putrid odor
8.	2-Butanone, 3-hydroxy-		18.	(2,6,6-Trimethyl-2-hydroxycyclohexylidene)-acetic acid lactone	
9.	Dimethyl trisulfide	Putrid odor	19.	Indole	Fecal
10.	1-Hexanol	Pungent odor			

* Standard samples are not used for qualitative analysis. Results from a library search.
Red letters: strong odor

GL Sciences disclaims any and all responsibility for any injury or damage which may be caused by this data directly or indirectly. We reserve the right to amend this information or data at any time and without any prior announcement.

GL Sciences, Inc. Japan

22-1 Nishishinjuku 6-Chome
Shinjuku-ku, Tokyo,
163-1130, Japan
Phone: +81-3-5323-6620
Fax: +81-3-5323-6621
Email: world@glsc.co.jp
Web: www.glsciences.com

GL Sciences B.V.

De Sleutel 9
5652 AS Eindhoven
The Netherlands
Phone: +31 (0)40 254 95 31
Email: info@glsciences.eu
Web: www.glsciences.eu

GL Sciences, Inc. USA

4733 Torrance Blvd. Suite 255
Torrance, CA 90503
Phone: 310-265-4424
Fax: 310-265-4425
Email: info@glsciencesinc.com
Web: www.glsciencesinc.com

GL Sciences (ShangHai) Ltd.

Tower B, Room 2003,
Far East International Plaza,
NO,317 Xianxia Road,
Changning District.
Shanghai, China P.C. 200032
Phone: +86 (0)21-6278-2272
Email: contact@glsciences.com.cn
Web: www.glsciences.com.cn

International Distributors

Visit our Website at www.glsciences.com/distributors

