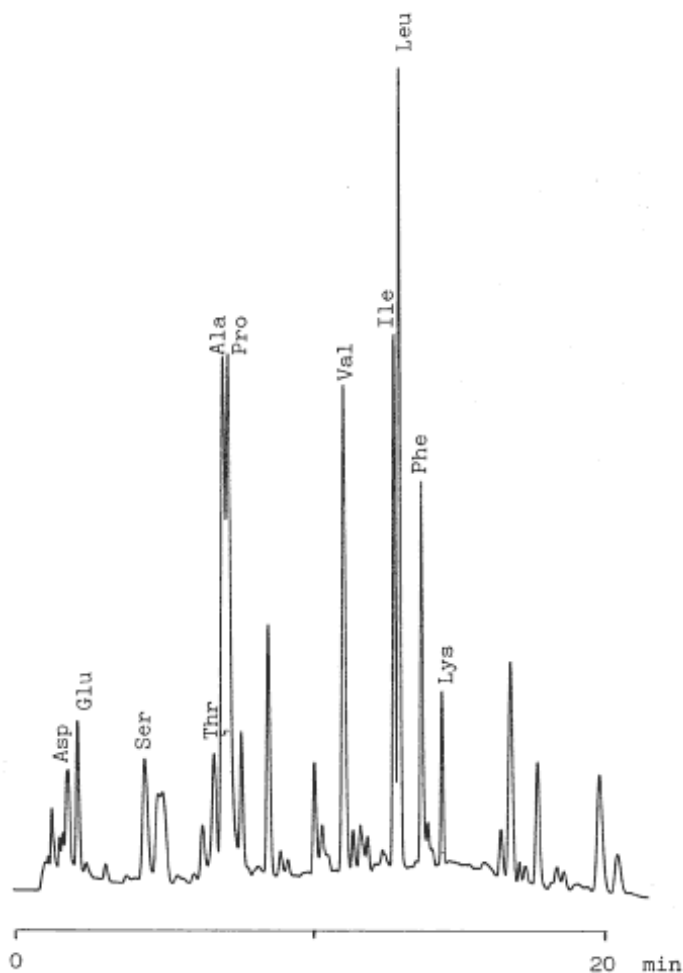


PTC-Amino acids in Soy-sauce

Data No. LA005-0000



Column :Inertsil C8
5µm
10 × 4.0 mm I.D. (Guard) + 100 × 4.6 mm I.D.
Column Cat. No. :5020-01201
Eluent :A: CH₃CN/0.1 M CH₃COONH₄ = 5/95
B: CH₃CN/0.1 M CH₃COONH₄ = 45/55
A/B = 100/0 - 7 min - 75/25 - 7 min - 0/100
Flow rate :1.0 mL/min.
Col. Temp. :40 °C
Detection :UV 254 nm
Injection Vol. :
Sample :PTC-amino acids

Solutes :1. Asparatic acid (Asp)
2. Glutamic acid (Glu)
3. Serine (Ser)
4. Threonine (Thr)
5. Alanine (Ala)
6. Proline (Pro)
7. Valine (Val)
8. Isoleucine (Ile)
9. Leucine (Leu)
10. Phenylalanine (Phe)
11. Lysine (Lys)