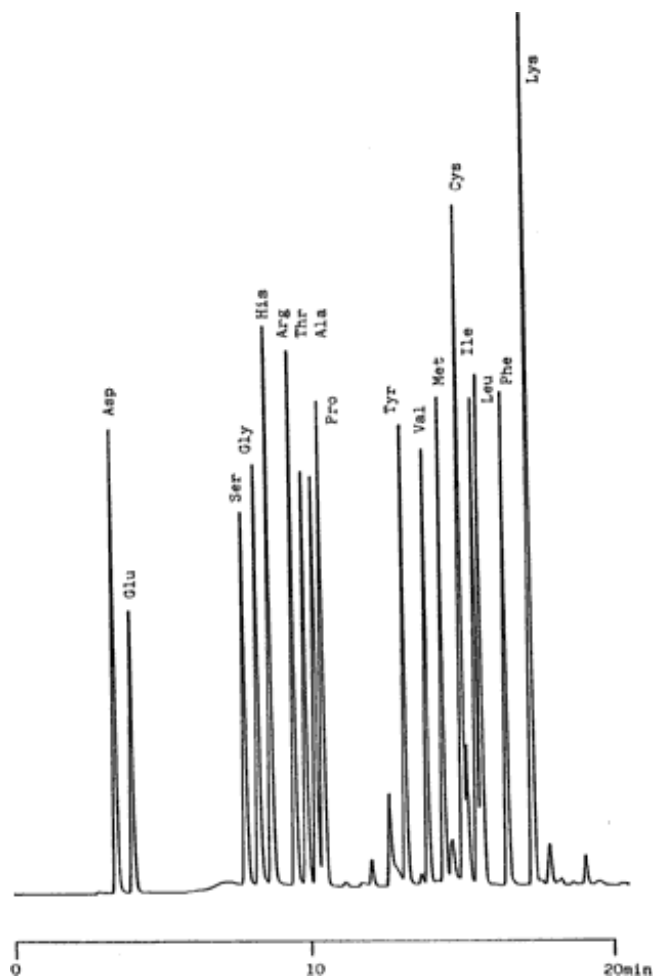


PTC-Amino acids



Column :Inertsil ODS-2
5µm
150 × 4.6 mm I.D.

Column Cat. No. :5020-01101

Eluent :A: CH₃CN/0.1 M CH₃COONH₄ = 5/95
B: CH₃CN/0.1 M CH₃COONH₄ = 60/40
A/B = 100/0 - 8min - 70/30 - 6min - 0/100

Flow rate :1.0 mL/min.

Col. Temp. :40 °C

Detection :UV 254 nm

Injection Vol. :

Sample :PTC-amino acids

Solutes

- :1. Asparatic acid (Asp)
2. Glutamic acid (Glu)
3. Serine (Ser)
4. Glycine (Gly)
5. Histidine (His)
6. Arginine (Arg)
7. Threonine (Thr)
8. Alanine (Ala)
9. Proline (Pro)
10. Tyrosine (Tyr)
11. Valine (Val)
12. Methionine (Met)
13. Cysteine (Cys)
14. Isoleucine (Ile)
15. Leucine (Leu)
16. Phenylalanine (Phe)
17. Lysine (Lys)