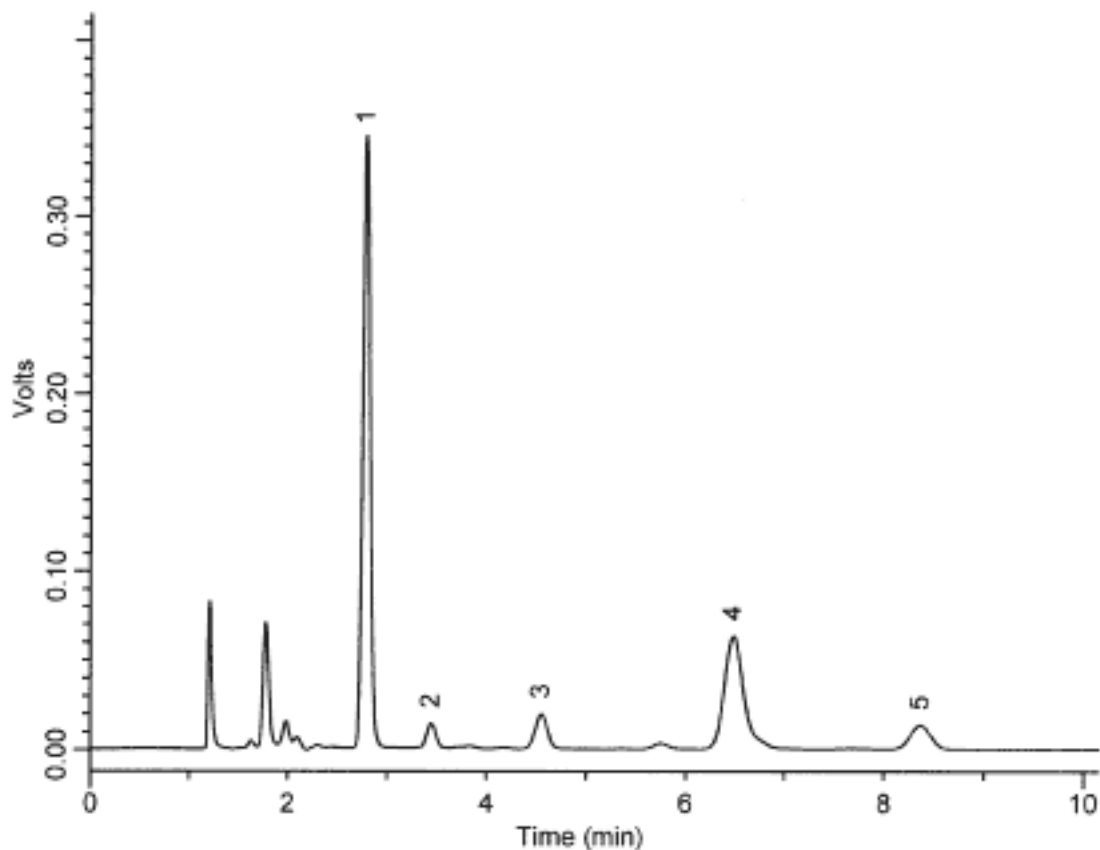


# InertSearch™ for LC

Inertsil® Applications

## Drug

Data No. LA028-0000



Column : Inertsil ODS-3V  
150 × 4.6 mm I.D.

Column Cat. No. :

Eluent : CH<sub>3</sub>CN/0.2 % H<sub>3</sub>PO<sub>4</sub>  
+ 5 mM IPCC-06 = 10/90

Flow rate : 1.0 mL/min.

Col. Temp. : 40°C

Detection : UV 210 nm

Injection Vol. : 3 µL

Sample : Water-soluble Vitamins (Drugs)

Solutes : 1. Nicotinamide (0.40 mg/mL)  
2. Pantothenic acid (0.20 mg/mL)  
3. Pyridoxine (0.24 mg/mL)  
4. Riboflavin phosphate (0.38 mg/mL)  
5. Thiamine (0.12 mg/mL)