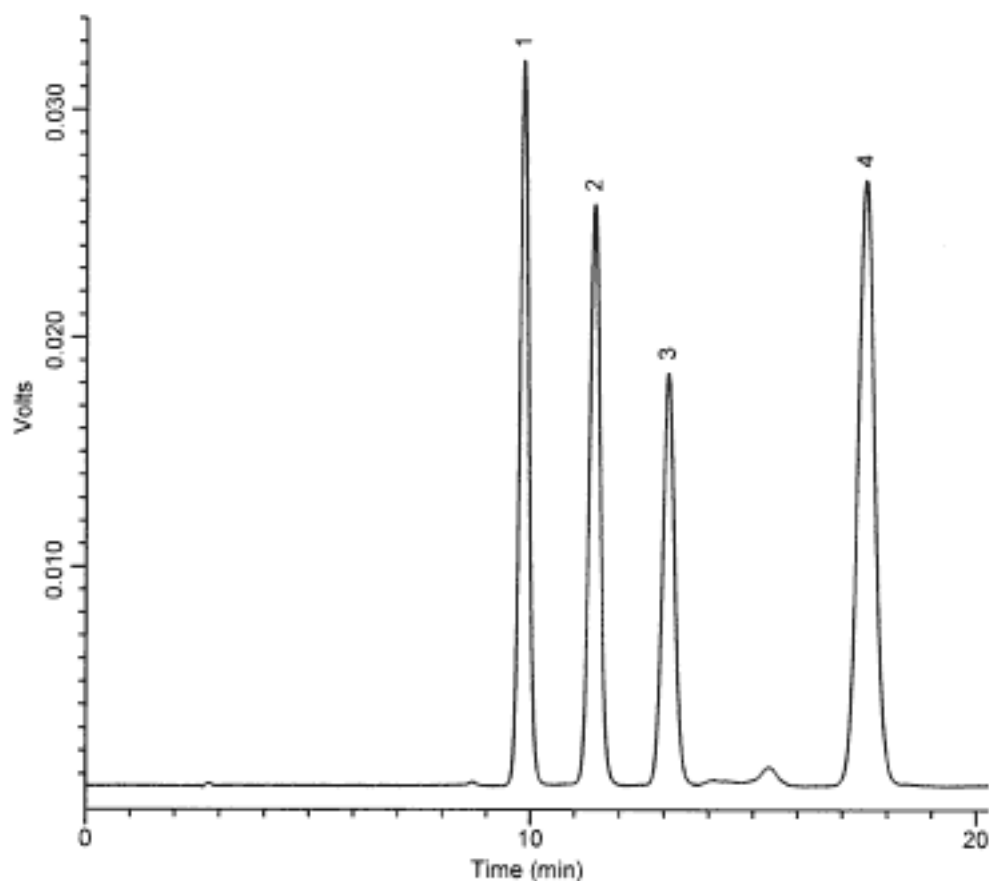


# InertSearch™ for LC

Inertsil® Applications

## Vitamins

Data No. LA032-0000



Column : Inertsil ODS-3  
250 × 4.6 mm I.D.

Column Cat. No.:

Eluent : CH<sub>3</sub>OH

Flow rate : 1.0 mL/min.

Col. Temp. : 40°C

Detection : UV 295 nm

Injection Vol. : 2 µL

Sample : Fat-soluble Vitamins

Solutes : 1. D- $\delta$ -Tocopherol (0.2 mg/mL)  
2. D- $\beta$ -Tocopherol (0.2 mg/mL)  
3. DL- $\alpha$ -Tocopherol (0.2 mg/mL)  
4. Vitamin E acetate (2.4 mg/mL)