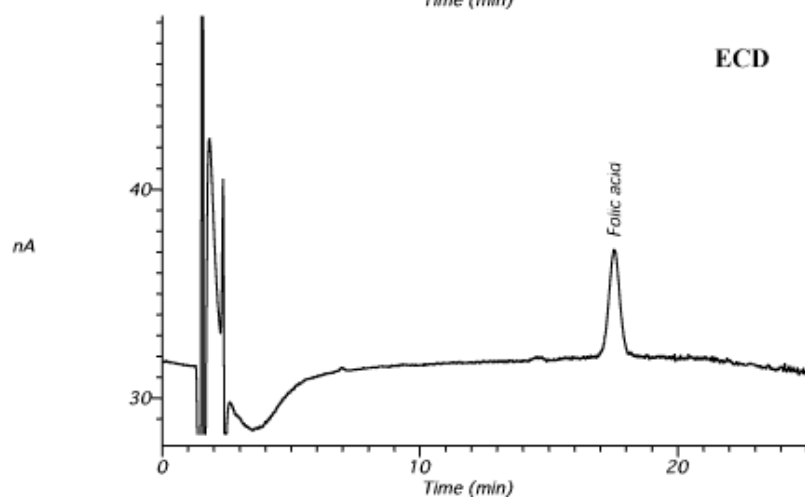
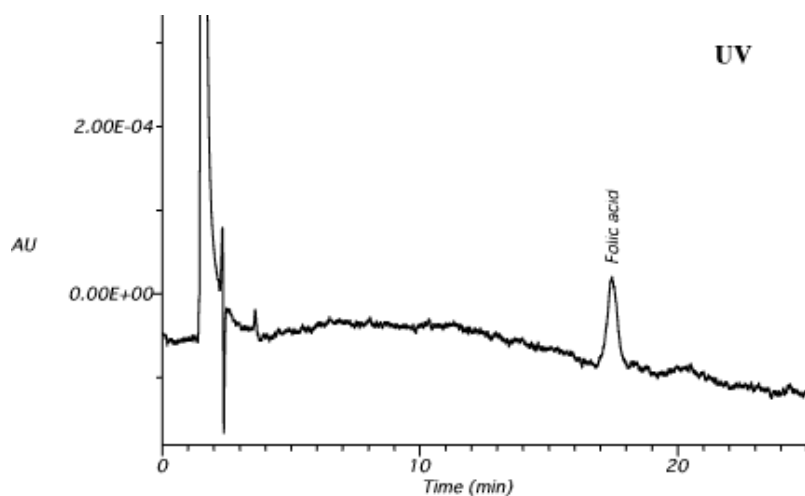


## Folic acids



Column :Inertsil ODS-3  
 5 $\mu$ m  
 150  $\times$  4.6 mm I.D.

Column Cat. No. :

Eluent :CH<sub>3</sub>CN/50 mM KH<sub>2</sub>PO<sub>4</sub> (pH 3.0; H<sub>3</sub>PO<sub>4</sub>) = 7/93

Flow rate :1.0 mL/min.

Col. Temp. :40°C

Detection :UV 254 nm  
 ECD 750 mV vs. Ag/AgCl (glassy carbon)

Injection Vol. :10  $\mu$ L

Sample :Folic acid

Solutes :100 ppb Folic acid in 10 % CH<sub>3</sub>CN, 10 mM K<sub>2</sub>HPO<sub>4</sub>, 1 mM EDTA