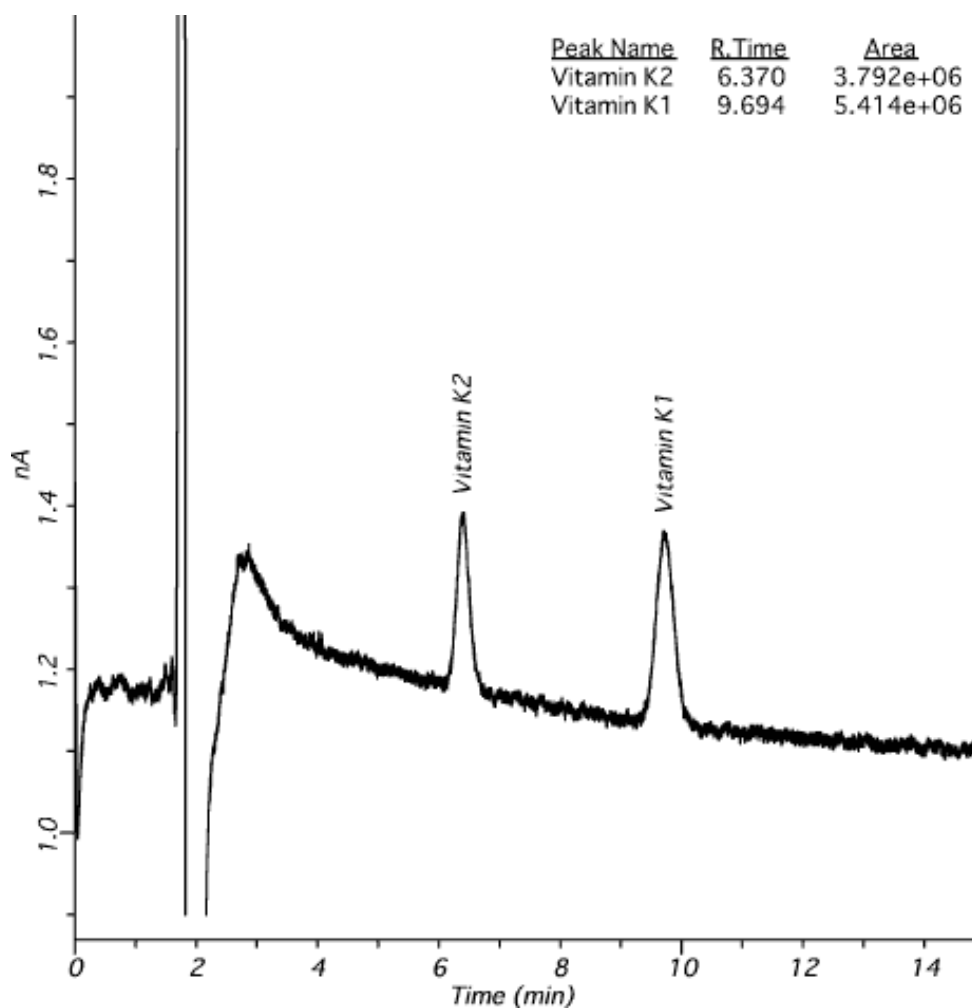


Vitamin K



Column : Inertsil ODS-3
 5 μ m
 150 \times 4.6 mm I.D.
 + 還元白金黒カラム 30 \times 4.0 mm I.D.

Column Cat. No. :

Eluent : CH₃OH/Ethanol = 56/44, 7 g/L NaClO₄

Flow rate : 1.0 mL/min.

Col. Temp. : 20°C

Detection : ECD 200 mV vs. Ag/AgCl

Injection Vol. : 50 μ L

Sample : Vitamin K1, K2

Solutes : 1. Vitamin K2 (2 ppb in CH₃OH/C₂H₅OH = 50/50, tR 6.370 Area 3.792e+06)
 2. Vitamin K1 (4 ppb in CH₃OH/C₂H₅OH = 50/50, tR 9.694 Area 5.414e+06)