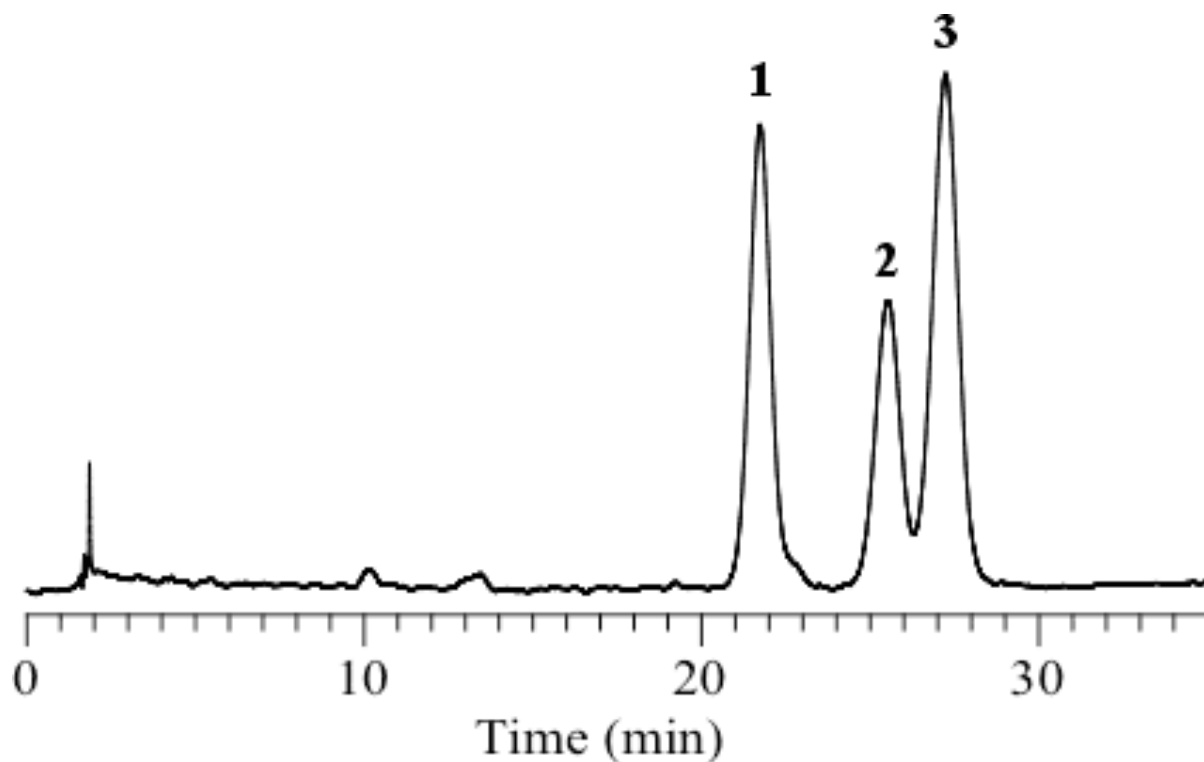


## Analysis of Carotenoids



Column	: Inertsil ODS-3 5 $\mu$ m 150 x 4.6 mm I.D.	Solutes	: 1. Lycopene 2. $\alpha$ -Carotene 3. $\beta$ -Carotene
Column Cat. No.:	: 5020-01731		
Eluent	: A) CH <sub>3</sub> OH B) THF A/B = 95/5, v/v		
Flow rate	: 1.0 mL/min.		
Col. Temp.	: 30°C		
Detection	: VIS 450 nm		
Injection Vol.	:		
Sample	:		