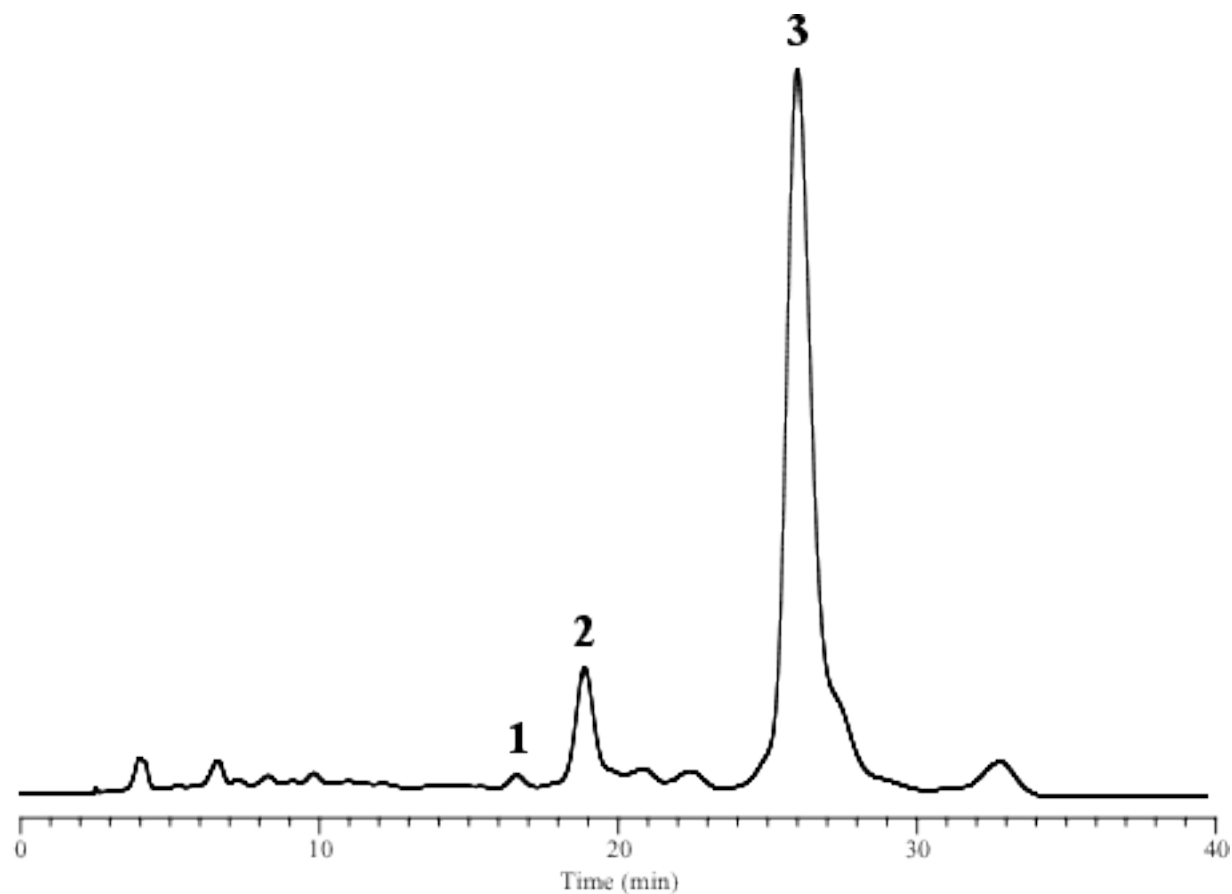


InertSearch™ for LC

Inertsil® Applications

Analysis of Vegetable Juice

Data No. LA053-0000



Column : Inertsil ODS-P
5 μ m
250 x 4.6 mm I.D.

Column Cat. No.: 5020-02002

Eluent : A) CH₃OH
B) THF
A/B = 95/5, v/v

Flow rate : 1.0 mL/min.

Col. Temp. : 30°C

Detection : VIS 450 nm

Injection Vol. :

Sample : Carotenoids

Solutes : 1. α -Carotene
2. β -Carotene
3. Lycopene