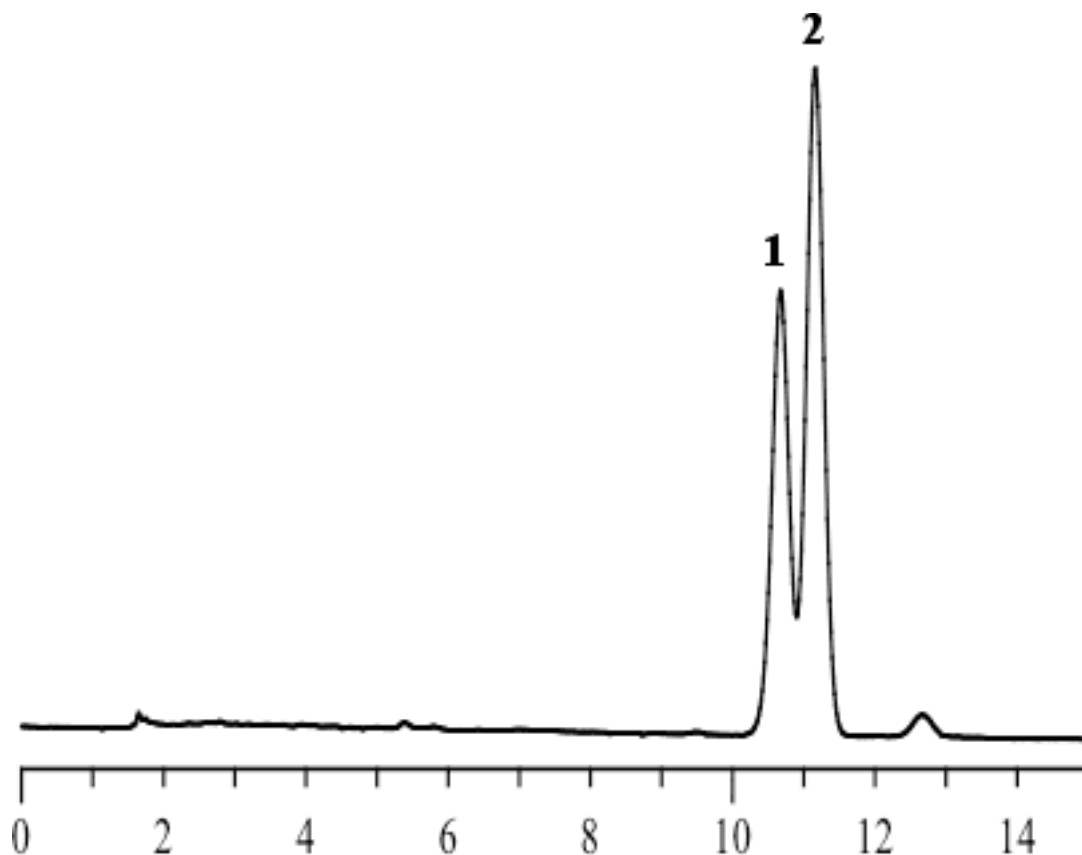


## Analysis of Vitamin D2 and D3



Column : Inertsil ODS-3  
 5 µm  
 150 x 4.6 mm I.D.

Solutes : 1. Vitamin D2  
 2. Vitamin D3

Column Cat. No.:

Eluent : A) CH<sub>3</sub>CN  
 B) CH<sub>3</sub>OH  
 A/B = 75/25, v/v

Flow rate : 1.0 mL/min.

Col. Temp. : 30°C

Detection : UV 280 nm

Injection Vol. :

Sample :