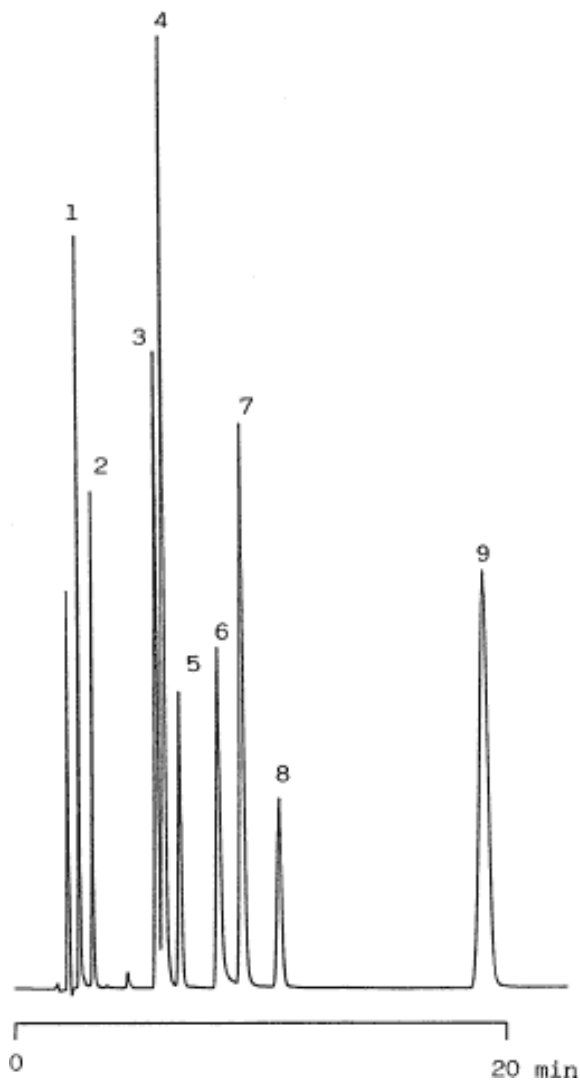


1. Food additives



Column : Inertsil Ph
 5µm
 150 × 4.6 mm I.D.

Column Cat. No. : 5020-01301

Eluent : CH₃CN/50 mM KH₂PO₃ + 0.1 % H₃PO₄ = 25/75

Flow rate : 1.0 mL/min.

Col. Temp. : 40°C

Detection : UV 230 nm

Injection Vol. :

Sample : Food Additives

Solutes : 1. Sodium saccharin
 2. p-Hydroxy benzoic acid
 3. Sorbic acid
 4. Benzoic acid
 5. p-Hydroxy benzoic acid methyl ester
 6. Dehydroacetic acid
 7. p-Toluic acid
 8. p-Hydroxy benzoic acid ethyl ester
 9. p-Hydroxy benzoic acid n-propyl ester