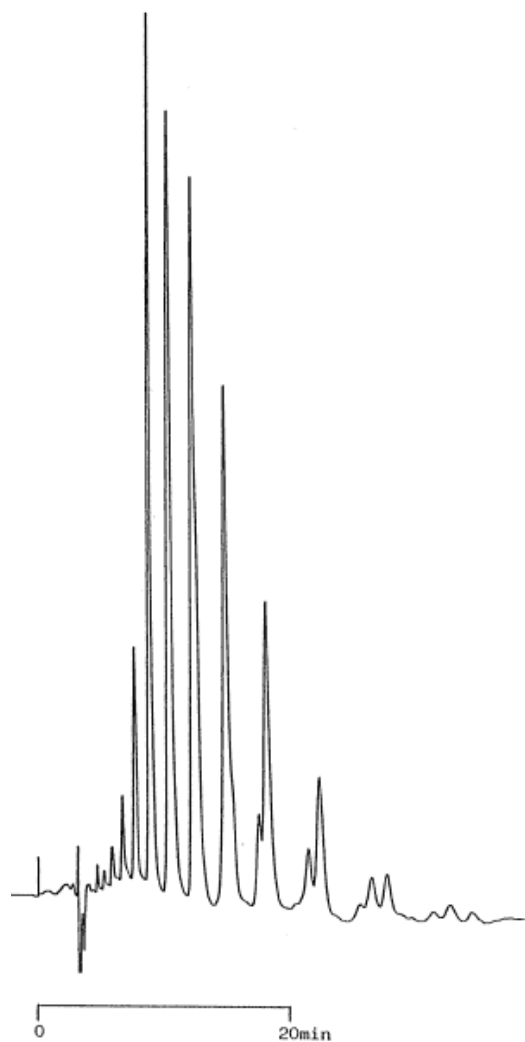


InertSearch™ for LC

Inertsil® Applications

9. Coconut oil

Data No. LA064-0000



Column :Inertsil ODS

5 μ m

250 \times 4.6 mm I.D.

Column Cat. No. :5020-02102

Eluent :CH₃CN/THF/CH₂Cl₂ = 70/20/10

Flow rate :1.0 mL/min.

Col. Temp. :Ambient

Detection :RI

Injection Vol. :

Sample :Coconut Oil

Solutes :Coconut Oil