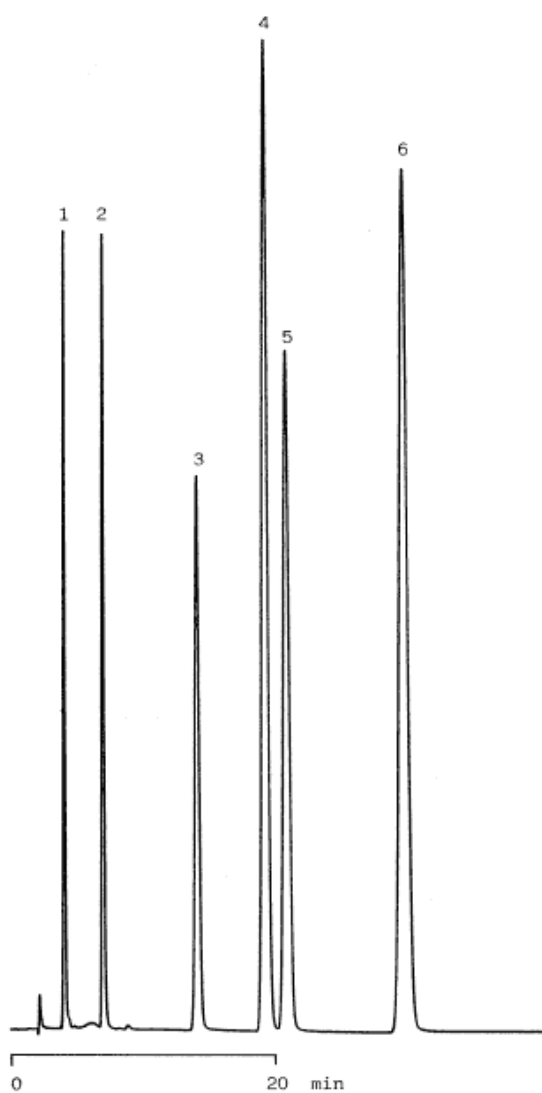


## 13. Synthetic antibacterials

Data No. LA068-0000



Column : Inertsil C4  
5 $\mu$ m  
150  $\times$  4.6 mm I.D.

Column Cat. No. : 5020-01401

Eluent : CH<sub>3</sub>CN/0.1 % H<sub>3</sub>PO<sub>4</sub> = 15/85

Flow rate : 1.0 mL/min.

Col. Temp. : 40°C

Detection : UV 284 nm

Injection Vol. :

Sample : Synthetic Antibacterials

Solutes : 1. Sulfamerazine (40  $\mu$ g/mL)  
2. Furazolidone (80  $\mu$ g/mL)  
3. Oxolinic acid (70  $\mu$ g/mL)  
4. Sulfadimethoxine (70  $\mu$ g/mL)  
5. Sulfaquinoxaline (90  $\mu$ g/mL)  
6. Nalidixic acid (290  $\mu$ g/mL)