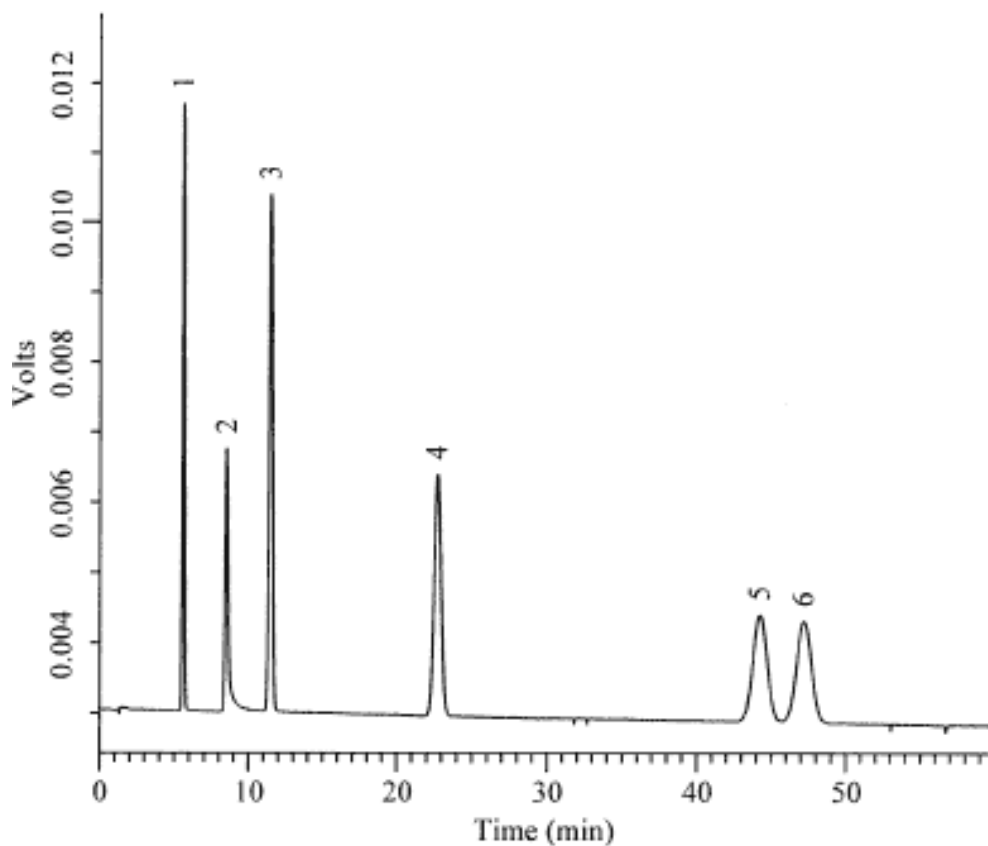


27. Analysis of Food additives



Column : Inertsil ODS-3V
150 × 4.6 mm I.D.

Column Cat. No. :

Eluent : CH₃CN/50 mM Phosphate buffer (pH 2.5) = 30/70

Flow rate : 1.0 mL/min.

Col. Temp. : 40°C

Detection : UV 230 nm

Injection Vol. : 1 µL

Sample : Food Additives

Solutes : 1. Sorbic acid (25 µg/mL)

2. Sodium dehydroacetate 1-hydrate (DHA, 25 µg/mL)

3. p-Hydroxy benzoic acid ethyl ester (PHBA-Et, 100 µg/mL)

4. p-Hydroxy benzoic acid n-propyl ester (PHBA-Pr, 100 µg/mL)

5. p-Hydroxy benzoic acid isobutyl ester (PHBA-iBu, 100 µg/mL)

6. p-Hydroxy benzoic acid n-butyl ester (PHBA-Bu, 100 µg/mL)