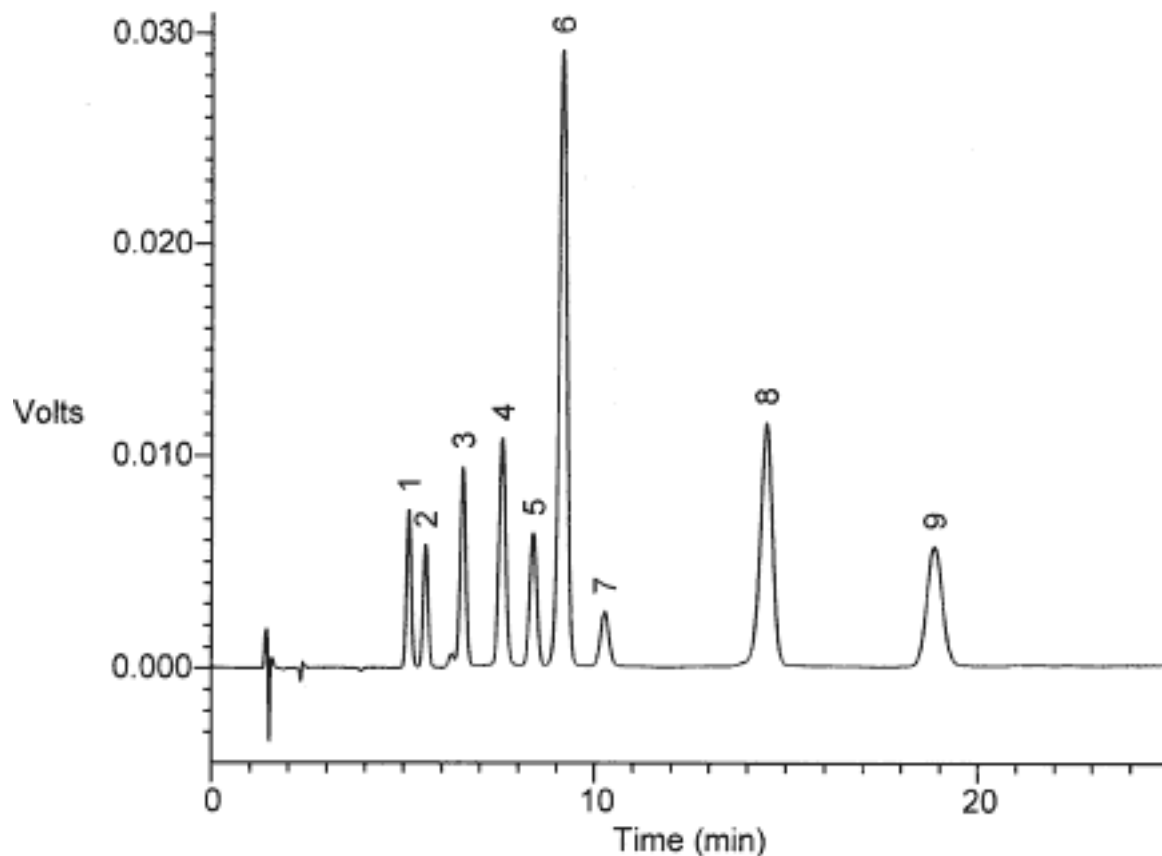


29. Analysis of Hormones



Column : Inertsil ODS-3V
150 × 4.6 mm I.D.

Column Cat. No. :

Eluent : CH₃CN/THF/H₂O = 35/8/57

Flow rate : 1.0 mL/min.

Col. Temp. : 40°C

Detection : UV 230 nm

Injection Vol. : 5 µL

Sample : Hormones

Solutes : 1. β - Trenbolone (50 mg/L)
2. α - Trenbolone (50mg/L)
3. β - Zearalenol (30 mg/L)
4. Testosterone (50 mg/L)
5. Zeranol (50 mg/L)
6. α - Zearalenol (30 mg/L)
7. α - Estradiol (50 mg/L)
8. Zearalenone (50 mg/L)
9. Diethylstilbestrol (50 mg/L)