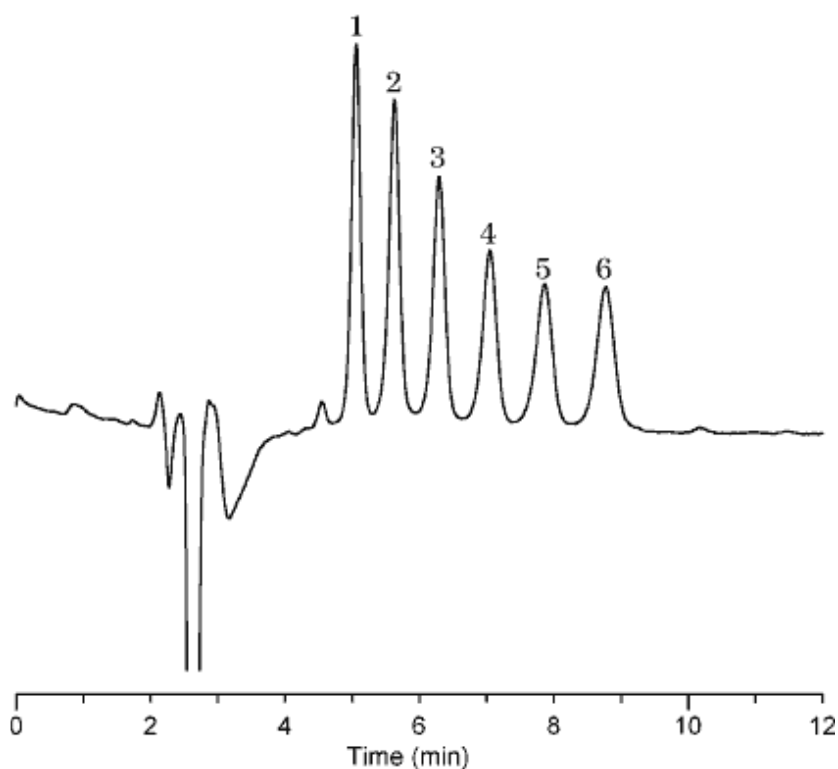


40. Malto oligosugars

Data No. LA094-0000



Column : Inertsil NH2
5 μ m
150 \times 4.6 mm I.D.

Column Cat. No. : 5020-05546

Eluent : CH₃CN/H₂O = 55/45

Flow rate : 1.0 mL/min.

Col. Temp. : 30°C

Detection : RI

Injection Vol. :

Sample : Malto Oligosugars

Solutes : 1. Maltose (1.67 mg/mL)
2. Maltotriose (1.67 mg/mL)
3. Maltotetraose (1.67 mg/mL)
4. Maltopentaose (1.67 mg/mL)
5. Maltohexaose (1.67 mg/mL)
6. Maltoheptaose (1.67 mg/mL)