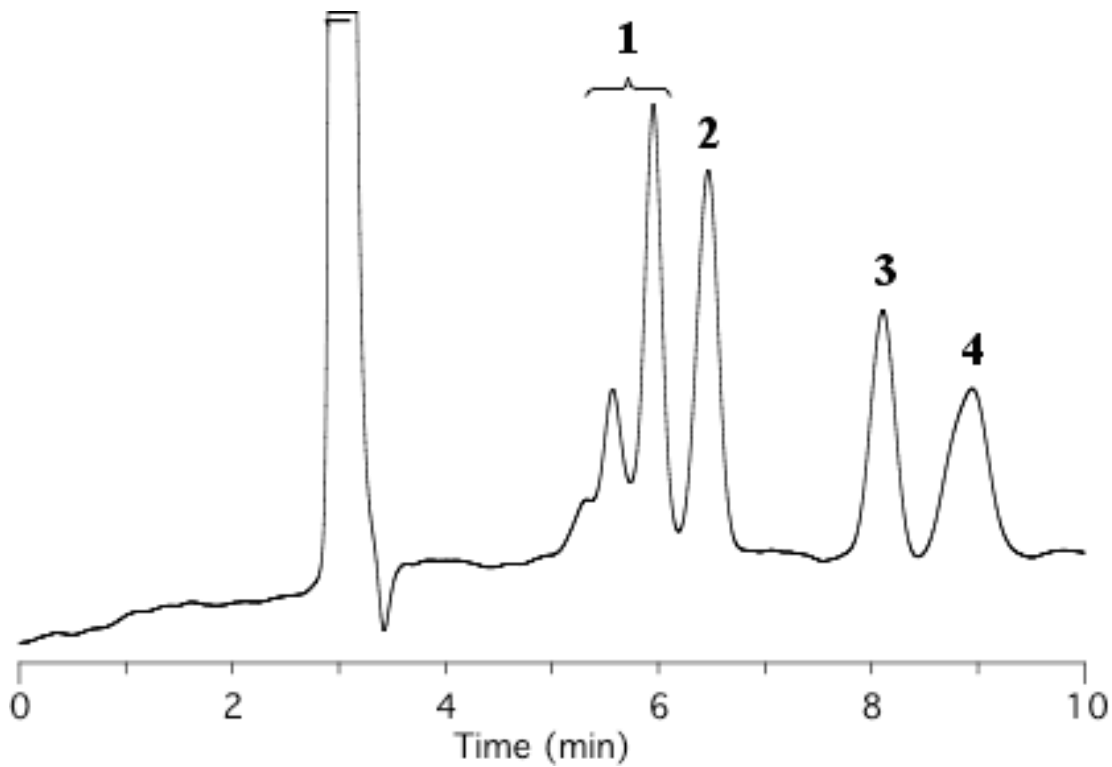


## Analysis of Monosaccharides and Disaccharides



Column : Inertsil Diol  
 5  $\mu$ m  
 250 x 4.6 mm I.D.

Column Cat. No. : 5020-05646

Eluent : A) CH<sub>3</sub>CN  
 B) H<sub>2</sub>O  
 A/B = 80/20, w/w

Flow rate : 1.0 mL/min.

Col. Temp. : 40°C

Detection : RI

Injection Vol. :

Sample :

Solutes : 1. Fructose  
 2. Glucose  
 3. Sucrose  
 4. Maltose